

LEA Name : West Chester Area SD
Address : 782 Springdale Drive
Exton , PA 19341

County : Chester
AUN Number : 124159002
LEA Type : SD

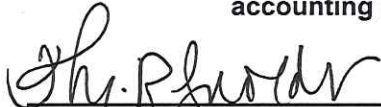
Annual Financial Report
Accuracy Certification Statement
For Fiscal Year Ending
6/30/2022

Pennsylvania Department of Education
&
Office of Comptroller Operations

PDE-2056: Intermediate Unit

PDE-2057: School District, AVTS/CTC, Charter School,
and Special Program Jointure

CERTIFICATION: By signing this page I agree that the electronic data submitted is a complete and accurate statement of the financial operations and status of the local education agency for the fiscal year. It has been prepared in accordance with generally accepted accounting principles and established Commonwealth of PA reporting guidelines.



Chief School Administrator Signature

1/30/23
Date



Board Secretary Signature

1/30/23
Date

Shawn Ryan

Contact Person

(484)266-1022

Ext :

Contact Person Telephone Number

sryan2@wcasd.net

Contact Person E-mail Address

Contact Person Fax Number

Audit Certification
Annual Financial Report:
For Fiscal Year Ending **6/30/2022**
(Pursuant to PA School Code Section 218(b))

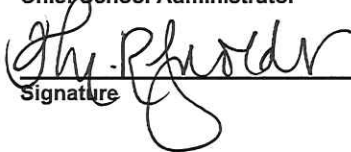
LEA Name : West Chester Area SD
AUN Number : 124159002
County : Chester

Audit Certification Due: 12/31/2022

This certification is applicable to the Annual Financial Report data submitted through the Consolidated Financial Reporting System (CFRS).

CERTIFICATION: By signing this page I agree that the financial statements of the school have been properly audited as noted above pursuant to Article XXIV, and in the auditor's professional opinion, the Annual Financial Report (PDE-2057) submitted through CFRS is materially consistent with the audited financial statements.

Chief School Administrator

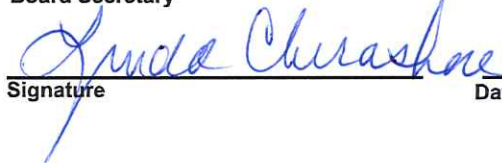


Signature

1/30/23

Date

Board Secretary



Signature

1/30/23

Date

Shawn Ryan

Contact Person

sryan2@wcasd.net

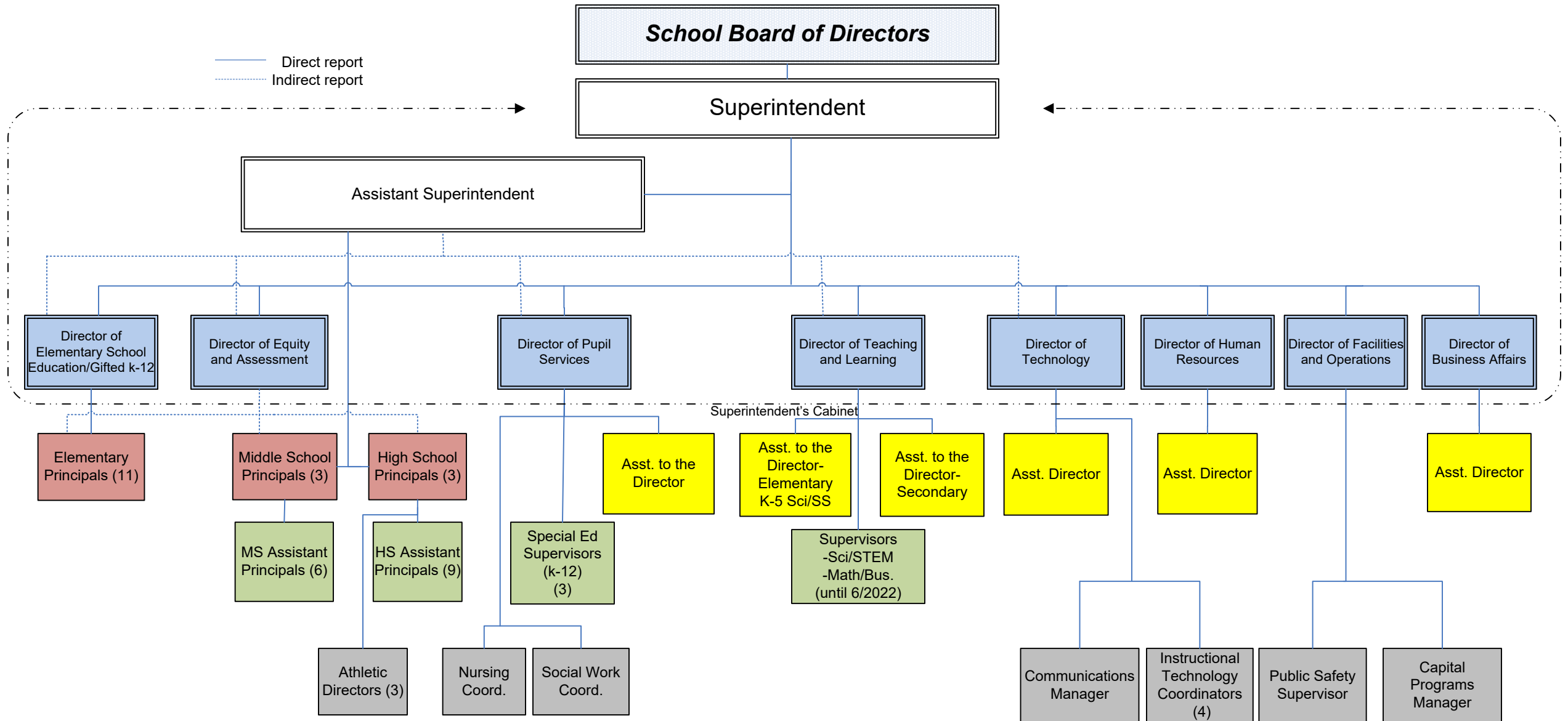
Contact Person E-mail Address

(484)266-1022

Ext :

Contact Person Telephone Number

Contact Person Fax Number



CAPITAL ASSETS PROCEDURE

(section 160)

CAPITAL ASSETS PROCEDURE

Implementation of GASB Statement 34 requires the District to properly record and classify capital assets and to depreciate them over their recognized useful lives.

In accordance with GASB Statement 34, capital assets include land, improvements to land, easements, buildings, building improvements, vehicles, machinery, equipment, works of art, historical treasures and infrastructure. Capital assets are both tangible and intangible assets used in operations, which have initial useful lives extending beyond a single reporting period. Any such capital asset will not change its original shape, appearance or character with use and can be expected to last more than one year with reasonable care and maintenance.

PURCHASED CAPITAL ASSETS

Purchased capital assets with a cost greater than or equal to \$5,000, or such dollar threshold that is deemed appropriate by the administration, shall be recorded at their historical/original cost. The cost of capital assets should include capitalized interest and ancillary charges necessary to place the asset into service. Ancillary charges include freight, site preparation and professional fees.

Capital assets should be depreciated over their useful lives as determined for each asset class. Inexhaustible capital assets such as land and land improvements shall not be depreciated.

When determining historical cost is not practical due to inadequate records, reported asset value shall be based on estimates of original cost at the date of construction or purchase.

Fixed asset records must include the acquisition date, cost, useful life, depreciation method and projected salvage value for appropriate capital asset classifications and groups.

Individual items costing less than the threshold amount, but purchased in quantity such that the aggregate total purchase cost meets or exceeds the threshold, may be capitalized as a single unit, described as a group asset, and depreciated over the useful life for that asset class.

Due to changes in technology, computer software is considered a supply and shall be expensed at the time of purchase. Upon purchase, components such as monitors and keyboards, which individually may fail to meet the threshold, shall be capitalized as a single unit, a group asset, whenever the aggregate items meet or exceed a threshold for technology equipment of \$1,000, or such dollar threshold that is deemed appropriate by the administration.

Cafeteria, kitchen appliances and food service equipment shall be capitalized when individual items equal or exceed a threshold of \$1,000 and shall be capitalized as a unit upon purchase when the individual components are less than the capitalization threshold but in the aggregate meet or exceed the threshold of \$1,000, or such dollar threshold that is deemed appropriate by the administration.

DONATED CAPITAL ASSETS

Donated capital assets must be reported at fair market value plus ancillary charges, if any, at the time of donation. Donated assets are recorded as contributed capital and depreciated over their useful lives as determined for each asset class.

If determining historical costs is not practical due to inadequate records, reporting should be based on estimates of fair market value at the date of donation.

COLLECTIONS

Works of art, historical treasures and similar assets should be capitalized at their historical cost or fair value at date of donation (estimated if necessary) whether they are held as individual items or in a collection.

Capitalized collections or individual items that are exhaustible should be depreciated over their useful lives. Depreciation is not required for collections or individual items that are inexhaustible.

INFRASTRUCTURE

Definition: Infrastructure assets are long-lived capital assets that normally are stationary in nature and can normally be preserved for a significantly greater number of years than most capital assets. Infrastructure includes site improvements such as bridges, tunnels, parking lots and sidewalks, or consulting on site acquisitions.

Infrastructure assets should be depreciated over their useful lives. Routine repairs and maintenance costs are charged to operations as incurred. Expenditures that extend the useful life of the infrastructure are capitalized as an asset and depreciated over the newly established useful life.

Useful Lives

Fixed assets are to be depreciated over the following useful lives:

<u>ASSET CLASS</u>	<u>YEARS</u>
School Buildings	40
Electrical/Plumbing	20
HVAC Systems	20
Interior Construction	20
Outdoor Equipment	20
Portable Classrooms	20
Roofing	20
Site Improvements	20
Sprinkler/Fire System	20
Stage & Auditorium	20
Contractors Equipment	10
Furniture & Accessories	10
Kitchen Equipment	10
Machinery & Tools	10
Musical Instruments	10
Licensed Vehicles	8
Athletic Equipment	7
Audio Visual Equipment	7
Grounds Equipment	7
Business Machines	5
Carpeting, New/ Replacement	5
Communication Equipment	5
Custodial Equipment	5
Library Books	5
Science & Engineering	5
Uniforms	5
Computer Hardware	3

DEPRECIATION EXPENSE

Depreciation expense should be reported in the statement of activities. Depreciation expense that can be specifically identified with a function should be included as a direct expense. Depreciation expense for shared facilities should be apportioned and included in direct expenses for each function.

Depreciation is allocated to expense in a systematic and rational manner. The straight-line, half-year convention method of depreciation is used.

Depreciation may be calculated for a class of assets, a network of assets or individual assets.

ASSETS ACQUIRED by CAPITAL LEASE

Assets acquired by capital lease are recorded at the net present value of the future minimum lease payments. A corresponding liability is established at this time. Assets acquired under the terms of capital leases are depreciated over the useful lives designated for the asset class.

<u>Val Number</u>	<u>Description</u>	<u>Justification</u>
30128	Fund 32: A negative amount has been reported in account 6500 Earnings on Investments. Please correct or enter an explanation. REV Detail 6500, Fund 32: \$-46,023.00	Negative amount is due to the loss on the District's investment portfolio.
41162	Expenditure Detail, Salaries (Object 100) and Benefits (Object 200 series): Amounts must be entered for both Salaries and Benefits. Please verify following fund and function codes: Fund 10 Function 2330;	Benefits are related to social security withholdings for contracted tax collector.
50160	SOIN: All Governmental Fund General Obligation Bonds must include an amount for Interest Paid during Fiscal Year. Correct data or enter a justification.	GOB 2022 was issued during FY21-22. During this year, no interest expense was paid related to this issuance.

Amounts Expressed in Whole Dollars

	<u>General Fund</u> <u>(10)</u>	<u>Student Sponsored</u> <u>Activity Fund</u> <u>(21)</u>	<u>Public Purpose Trust</u> <u>(27)</u>	<u>Other Compt Approved</u> <u>(28)</u>	<u>Athletic / Activity</u> <u>(29)</u>
Assets And Deferred Outflows Of Resources					
Assets					
0100 Cash and Cash Equivalents	16,248,959				
0110 Investments	81,015,641				
0120 Taxes Receivable	3,426,557				
0130 Due From Other Funds	141,140				
0141 Due From Other Governments	7,620,991				
0142 State Revenue Receivable					
0143 Federal Revenue Receivable					
0145 Other Intergovernmental Revenue Receivable					
0146 Due from Primary Government					
0147 Due from Component Unit					
0150 Other Receivables	1,628,166				
0170 Inventories					
0180 Prepaid Expenses (Expenditures)	2,232,155				
0190 Other Current Assets					
Total Assets	\$112,313,609				
0910 Deferred Outflows of Resources					
Total Assets And Deferred Outflows Of Resources	\$112,313,609				

Amounts Expressed in Whole Dollars

	<u>Capital Reserve (690.</u> <u>1850)</u> <u>(31)</u>	<u>Capital Reserve (1431)</u> <u>(32)</u>	<u>Other Capital Projects</u> <u>Fund</u> <u>(39)</u>	<u>Debt Service</u> <u>(40)</u>	<u>Permanent</u> <u>(90)</u>
Assets And Deferred Outflows Of Resources					
Assets					
0100 Cash and Cash Equivalents		4,115,388	2,507,331		
0110 Investments		19,233,189	29,057,609		
0120 Taxes Receivable					
0130 Due From Other Funds					
0141 Due From Other Governments					
0142 State Revenue Receivable					
0143 Federal Revenue Receivable					
0145 Other Intergovernmental Revenue Receivable					
0146 Due from Primary Government					
0147 Due from Component Unit					
0150 Other Receivables		245,147	2,232		
0170 Inventories					
0180 Prepaid Expenses (Expenditures)		197,500			
0190 Other Current Assets					
Total Assets		\$23,791,224	\$31,567,172		
0910 Deferred Outflows of Resources					
Total Assets And Deferred Outflows Of Resources		\$23,791,224	\$31,567,172		

Amounts Expressed in Whole Dollars

Total Governmental Funds

Assets And Deferred Outflows Of Resources

Assets	
0100 Cash and Cash Equivalents	22,871,678
0110 Investments	129,306,439
0120 Taxes Receivable	3,426,557
0130 Due From Other Funds	141,140
0141 Due From Other Governments	7,620,991
0142 State Revenue Receivable	
0143 Federal Revenue Receivable	
0145 Other Intergovernmental Revenue Receivable	
0146 Due from Primary Government	
0147 Due from Component Unit	
0150 Other Receivables	1,875,545
0170 Inventories	
0180 Prepaid Expenses (Expenditures)	2,429,655
0190 Other Current Assets	
Total Assets	\$167,672,005
0910 Deferred Outflows of Resources	
Total Assets And Deferred Outflows Of Resources	\$167,672,005

Amounts Expressed in Whole Dollars

	<u>General Fund</u> <u>(10)</u>	<u>Student Sponsored</u> <u>Activity Fund</u> <u>(21)</u>	<u>Public Purpose Trust</u> <u>(27)</u>	<u>Other Compt Approved</u> <u>(28)</u>	<u>Athletic / Activity</u> <u>(29)</u>
Liabilities And Deferred Inflows Of Resources And Fund Balances					
Liabilities					
0400 Due to Other Funds					
0411 Due to Other Governments					
0412 Due to Primary Government					
0413 Due to Component Unit					
0420 Accounts Payable	8,762,194				
0430 Contracts Payable					
0440 Current Portion of Long-Term Debt					
0450 Short-Term Payables					
0461 Accrued Salaries and Benefits					
0462 Payroll Deductions and Withholding	18,207,457				
0480 Unearned Revenues	174,357				
0490 Other Current Liabilities					
Total Liabilities	\$27,144,008				
0950 Deferred Inflows of Resources	1,557,591				
Fund Balances					
0810 Nonspendable Fund Balance	2,232,155				
0820 Restricted Fund Balance					
0830 Committed Fund Balance	4,159,909				
0840 Assigned Fund Balance	60,772,223				
0850 Unassigned Fund Balance	16,447,723				
Total Fund Balances	\$83,612,010				
Total Liabilities, Deferred Inflows Of Resources And Fund Balances	\$112,313,609				

Amounts Expressed in Whole Dollars	<u>Capital Reserve (690.</u> <u>1850)</u> <u>(31)</u>	<u>Capital Reserve (1431)</u> <u>(32)</u>	<u>Other Capital Projects</u> <u>Fund</u> <u>(39)</u>	<u>Debt Service</u> <u>(40)</u>	<u>Permanent</u> <u>(90)</u>
Liabilities And Deferred Inflows Of Resources And Fund Balances					
Liabilities					
0400 Due to Other Funds					
0411 Due to Other Governments					
0412 Due to Primary Government					
0413 Due to Component Unit					
0420 Accounts Payable		347,732	1,623,684		
0430 Contracts Payable					
0440 Current Portion of Long-Term Debt					
0450 Short-Term Payables					
0461 Accrued Salaries and Benefits					
0462 Payroll Deductions and Withholding					
0480 Unearned Revenues					
0490 Other Current Liabilities					
Total Liabilities		\$347,732	\$1,623,684		
0950 Deferred Inflows of Resources					
Fund Balances					
0810 Nonspendable Fund Balance		197,500			
0820 Restricted Fund Balance		23,245,992	29,943,488		
0830 Committed Fund Balance					
0840 Assigned Fund Balance					
0850 Unassigned Fund Balance					
Total Fund Balances		\$23,443,492	\$29,943,488		
Total Liabilities, Deferred Inflows Of Resources And Fund Balances		\$23,791,224	\$31,567,172		

Amounts Expressed in Whole Dollars

Total Governmental Funds

Liabilities And Deferred Inflows Of Resources And Fund Balances

Liabilities

0400 Due to Other Funds	
0411 Due to Other Governments	
0412 Due to Primary Government	
0413 Due to Component Unit	
0420 Accounts Payable	10,733,610
0430 Contracts Payable	
0440 Current Portion of Long-Term Debt	
0450 Short-Term Payables	
0461 Accrued Salaries and Benefits	
0462 Payroll Deductions and Withholding	18,207,457
0480 Unearned Revenues	174,357
0490 Other Current Liabilities	

Total Liabilities \$29,115,424

0950 Deferred Inflows of Resources	1,557,591
------------------------------------	-----------

Fund Balances

0810 Nonspendable Fund Balance	2,429,655
0820 Restricted Fund Balance	53,189,480
0830 Committed Fund Balance	4,159,909
0840 Assigned Fund Balance	60,772,223
0850 Unassigned Fund Balance	16,447,723

Total Fund Balances \$136,998,990

Total Liabilities, Deferred Inflows Of Resources And Fund Balances \$167,672,005

Amounts Expressed in Whole Dollars	<u>General Fund</u> <u>(10)</u>	<u>Student Sponsored</u> <u>Activity Fund</u> <u>(21)</u>	<u>Public Purpose Trust</u> <u>(27)</u>	<u>Other Compt Approved</u> <u>(28)</u>	<u>Athletic / Activity</u> <u>(29)</u>
Revenues					
6000 Revenue from Local Sources	226,313,124				
7000 Revenue from State Sources	46,937,783				
8000 Revenue from Federal Sources	4,460,397				
Total Revenues	\$277,711,304				
Expenditures					
1000 Instruction	153,855,965				
2000 Support Services	72,265,154				
3000 Operation of Non-Instructional Services	5,493,284				
4000 Facilities Acquisition, Construction and Improvement Services					
5110 Debt Service	27,537,215				
5130 Refund of Prior Year Revenues / Receipts					
5140 Leases	120,100				
Total Expenditures	\$259,271,718				
Excess (Deficiency) Of Revenues Over Expenditures	\$18,439,586				
Other Financing Sources (Uses)					
9110 Face Value of Bonds Issued					
9120 Proceeds from Refunding of Bonds					
9130 Bond Premiums					
9200 Proceeds from Extended-Term Financing and Leases					
9300 Interfund Transfers - IN					
9400 Sale of or Compensation for Loss of Fixed Assets	2,750,000				
9710 Transfers from Component Units					
9720 Transfers from Primary Governments					
9910 Other Financing Sources Not Listed in the 9000 Series					
9990 Insurance Recoveries					
5120 Debt Service – Refunded Bonds					
5150 Bond Discounts					
5200 Interfund Transfers – Out	6,730,104				
5300 Transfers Out to Component Units/Primary Governments					
Total Other Financing Sources (Uses)	(\$3,980,104)				

Amounts Expressed in Whole Dollars	<u>Capital Reserve (690.1850)</u> <u>(31)</u>	<u>Capital Reserve (1431)</u> <u>(32)</u>	<u>Other Capital Projects</u> <u>Fund</u> <u>(39)</u>	<u>Debt Service</u> <u>(40)</u>	<u>Permanent</u> <u>(90)</u>
Revenues					
6000 Revenue from Local Sources		(46,023)			
7000 Revenue from State Sources					
8000 Revenue from Federal Sources					
Total Revenues		(\$46,023)			
Expenditures					
1000 Instruction			181,934		
2000 Support Services		4,039,554	9,827	238,260	
3000 Operation of Non-Instructional Services					
4000 Facilities Acquisition, Construction and Improvement Services		2,772,273	8,025,846		
5110 Debt Service					
5130 Refund of Prior Year Revenues / Receipts					
5140 Leases			40,865		
Total Expenditures		\$6,811,827	\$8,258,472	\$238,260	
Excess (Deficiency) Of Revenues Over Expenditures		(\$6,857,850)	(\$8,258,472)	(\$238,260)	
Other Financing Sources (Uses)					
9110 Face Value of Bonds Issued					
9120 Proceeds from Refunding of Bonds				30,115,000	
9130 Bond Premiums				4,880,892	
9200 Proceeds from Extended-Term Financing and Leases			492,331		
9300 Interfund Transfers - IN		6,730,104	6,242		
9400 Sale of or Compensation for Loss of Fixed Assets					
9710 Transfers from Component Units					
9720 Transfers from Primary Governments					
9910 Other Financing Sources Not Listed in the 9000 Series					
9990 Insurance Recoveries					
5120 Debt Service – Refunded Bonds				34,751,390	
5150 Bond Discounts					
5200 Interfund Transfers – Out				6,242	
5300 Transfers Out to Component Units/Primary Governments					
Total Other Financing Sources (Uses)		\$6,730,104	\$498,573	\$238,260	

Amounts Expressed in Whole Dollars	<u>Total Governmental Funds</u>
Revenues	
6000 Revenue from Local Sources	226,267,101
7000 Revenue from State Sources	46,937,783
8000 Revenue from Federal Sources	4,460,397
Total Revenues	\$277,665,281
Expenditures	
1000 Instruction	154,037,899
2000 Support Services	76,552,795
3000 Operation of Non-Instructional Services	5,493,284
4000 Facilities Acquisition, Construction and Improvement Services	10,798,119
5110 Debt Service	27,537,215
5130 Refund of Prior Year Revenues / Receipts	
5140 Leases	160,965
Total Expenditures	\$274,580,277
Excess (Deficiency) Of Revenues Over Expenditures	\$3,085,004
Other Financing Sources (Uses)	
9110 Face Value of Bonds Issued	
9120 Proceeds from Refunding of Bonds	30,115,000
9130 Bond Premiums	4,880,892
9200 Proceeds from Extended-Term Financing and Leases	492,331
9300 Interfund Transfers - IN	6,736,346
9400 Sale of or Compensation for Loss of Fixed Assets	2,750,000
9710 Transfers from Component Units	
9720 Transfers from Primary Governments	
9910 Other Financing Sources Not Listed in the 9000 Series	
9990 Insurance Recoveries	
5120 Debt Service – Refunded Bonds	34,751,390
5150 Bond Discounts	
5200 Interfund Transfers – Out	6,736,346
5300 Transfers Out to Component Units/Primary Governments	
Total Other Financing Sources (Uses)	\$3,486,833

Amounts Expressed in Whole Dollars	<u>General Fund</u> <u>(10)</u>	<u>Student Sponsored</u> <u>Activity Fund</u> <u>(21)</u>	<u>Public Purpose Trust</u> <u>(27)</u>	<u>Other Compt Approved</u> <u>(28)</u>	<u>Athletic / Activity</u> <u>(29)</u>
Special And Extraordinary Items					
9920 Special Items – Gains					
9930 Extraordinary Items – Gains					
5520 Special Items – Losses					
5530 Extraordinary Items – Losses					
Net Change In Fund Balances	\$14,459,482				
Fund Balance					
0001 Fund Balance - Beginning of Fiscal Year	69,152,529				
Fund Balance - End Of Year	\$83,612,011				

Amounts Expressed in Whole Dollars	<u>Capital Reserve (690.</u> <u>1850)</u> <u>(31)</u>	<u>Capital Reserve (1431)</u> <u>(32)</u>	<u>Other Capital Projects</u> <u>Fund</u> <u>(39)</u>	<u>Debt Service</u> <u>(40)</u>	<u>Permanent</u> <u>(90)</u>
Special And Extraordinary Items					
9920 Special Items – Gains					
9930 Extraordinary Items – Gains					
5520 Special Items – Losses					
5530 Extraordinary Items – Losses					
Net Change In Fund Balances		(\$127,746)	(\$7,759,899)		
Fund Balance					
0001 Fund Balance - Beginning of Fiscal Year		23,571,239	37,703,387		
Fund Balance - End Of Year		\$23,443,493	\$29,943,488		

Amounts Expressed in Whole Dollars	<u>Total Governmental Funds</u>
Special And Extraordinary Items	
9920 Special Items – Gains	
9930 Extraordinary Items – Gains	
5520 Special Items – Losses	
5530 Extraordinary Items – Losses	
Net Change In Fund Balances	\$6,571,837
Fund Balance	
0001 Fund Balance - Beginning of Fiscal Year	130,427,155
Fund Balance - End Of Year	\$136,998,992

Amounts Expressed in Whole Dollars	<u>Food Service</u> <u>(51)</u>	<u>Child Care</u> <u>Operations</u> <u>(52)</u>	<u>Other Enterprise</u> <u>(58)</u>	<u>TOTAL</u>	<u>Internal Service</u> <u>(60)</u>
Assets And Deferred Outflows Of Resources					
Current Assets					
0100 Cash and Cash Equivalents	55,320			55,320	
0110 Investments	2,167,808			2,167,808	
0130 Due From Other Funds					
0141 Due From Other Governments	738,884			738,884	
0142 State Revenue Receivable					
0143 Federal Revenue Receivable					
0146 Due from Primary Government					
0147 Due from Component Unit					
0150 Other Receivables	22,970			22,970	
0170 Inventories	3,357			3,357	
0180 Prepaid Expenses (Expenditures)					
0190 Other Current Assets					
Total Current Assets	\$2,988,339			\$2,988,339	
Noncurrent Assets					
0211 Land					
0212 Site Improvements (Net)					
0220 Buildings and Building Improvements (Net)					
0230 Machinery, Equipment and Furniture (Net)	614,850			614,850	
0250 Construction in Progress					
0260 Long Term Prepayments					
0290 Other Noncurrent Assets					
Total Noncurrent Assets	\$614,850			\$614,850	
0910 Deferred Outflows of Resources					
Total Assets And Deferred Outflows Of Resources	\$3,603,189			\$3,603,189	

Amounts Expressed in Whole Dollars	<u>Food Service</u> <u>(51)</u>	<u>Child Care</u> <u>Operations</u> <u>(52)</u>	<u>Other Enterprise</u> <u>(58)</u>	<u>TOTAL</u>	<u>Internal Service</u> <u>(60)</u>
Liabilities And Deferred Inflows Of Resources And Net Position					
Current Liabilities					
0400 Due to Other Funds	141,140			141,140	
0411 Due to Other Governments					
0413 Due to Component Unit					
0420 Accounts Payable	263,819			263,819	
0430 Contracts Payable					
0440 Current Portion of Long-Term Debt					
0450 Short-Term Payables					
0461 Accrued Salaries and Benefits					
0462 Payroll Deductions and Withholding					
0480 Unearned Revenues	382,305			382,305	
0490 Other Current Liabilities					
Total Current Liabilities	\$787,264			\$787,264	
Noncurrent Liabilities					
0510 Bonds Payable					
0520 Extended-Term Financing Agreements Payable					
0530 Lease Obligations					
0540 Accumulated Compensated Absences					
0550 Authority Lease Obligations					
0560 Other Post-Employment Benefits (OPEB)					
0570 Net Pension Liability					
0599 Other Noncurrent Liabilities					
Total Noncurrent Liabilities					
Total Liabilities	\$787,264			\$787,264	
0950 Deferred Inflows of Resources					
Net Position					
0791 Net Investment in Capital Assets	614,850			614,850	
0008 Restricted Net Position (0792 – 0798)					
0799 Unrestricted Net Position	2,201,075			2,201,075	
Total Net Position	\$2,815,925			\$2,815,925	
Total Liabilities And Deferred Inflows Of Resources And Net Position	\$3,603,189			\$3,603,189	

Amounts Expressed in Whole Dollars	<u>Food Service</u> <u>(51)</u>	<u>Child Care Operations</u> <u>(52)</u>	<u>Other Enterprise</u> <u>(58)</u>	<u>TOTAL</u>	<u>Internal Service</u> <u>(60)</u>
Operating Revenues					
6600 Food Service Revenue	378,935			378,935	
0071 Charges for Services					
0072 Other Operating Revenue					
Total Operating Revenues	\$378,935			\$378,935	
Operating Expenses					
100 Personnel Services – Salaries					
200 Personnel Services – Employee Benefits					
300 Purchased Professional and Technical Services					
400 Purchased Property Services					
500 Other Purchased Services	4,137,074			4,137,074	
600 Supplies					
740 Depreciation	130,190			130,190	
810 Dues and Fees					
880 Refunds of Prior Years' Receipts					
890 Miscellaneous Expenditures	(1,735)			(1,735)	
Total Operating Expenses	\$4,265,529			\$4,265,529	
Operating Income (Loss)	(\$3,886,594)			(\$3,886,594)	
Non Operating Revenues (Expenses)					
6500 Earnings on Investments	3,763			3,763	
6920 Contributions and Donations from Private Sources					
6930 Gains or Losses on Sale of Fixed Assets					
6991 Refunds of a Prior Year Expenditure					
7000 Revenue from State Sources	144,303			144,303	
8000 Revenue from Federal Sources	5,225,180			5,225,180	
9990 Insurance Recoveries					
820 Claims and Judgments Against the LEA					
830 Interest					
TOTAL Non Operating Revenues (Expenses)	\$5,373,246			\$5,373,246	
Income (Loss) Before Contributions And Transfers	\$1,486,652			\$1,486,652	

Amounts Expressed in Whole Dollars	<u>Food Service</u> <u>(51)</u>	<u>Child Care Operations</u> <u>(52)</u>	<u>Other Enterprise</u> <u>(58)</u>	<u>TOTAL</u>	<u>Internal Service</u> <u>(60)</u>
Contributions, Transfers, and Special and Extraordinary Items					
5200 Interfund Transfers – Out					
5300 Transfers Out to Component Units/Primary Governments					
5520 Special Items – Losses					
5530 Extraordinary Items – Losses					
9300 Interfund Transfers - IN					
9500 Capital Contributions					
9700 Transfers IN From Component Units/Primary Governments					
9920 Special Items – Gains					
9930 Extraordinary Items – Gains					
Change In Net Position	\$1,486,652			\$1,486,652	
0002 Net Position - Beginning of Fiscal Year	1,329,273			1,329,273	
0003 Accounting Changes / Residual Equity Transfers					
Net Position - End Of Year	\$2,815,925			\$2,815,925	

Amounts Expressed in Whole Dollars	<u>Food Service</u> <u>(51)</u>	<u>Child Care Operations</u> <u>(52)</u>	<u>Other Enterprise</u> <u>(58)</u>	<u>TOTAL</u>	<u>Internal Service(60)</u>
Cash Flows From Operating Activities					
0011 Cash Receipts From Users	515,160			515,160	
0012 Cash Receipts From Assessments Made to Other Funds					
0013 Cash Receipts From Earnings on Investments					
0014 Cash Receipts From Other Operating Revenue					
0015 Cash Payments To Employees For Services					
0016 Cash Payments For Insurance Claims					
0017 Cash Payments To Suppliers For Goods and Services	3,779,591			3,779,591	
0018 Cash Payments For Other Operating Expenses					
Net Cash Provided By (Used For) Operating Activities	(\$3,264,431)			(\$3,264,431)	
Cash Flows From Non-Capital Financing Activities					
0021 Receipts From Local Sources - 6000	147,791			147,791	
0022 Receipts From State Sources - 7000	4,875,680			4,875,680	
0023 Receipts From Federal Sources -8000					
0024 Notes and Loans Received (Repaid)					
0025 Interest Paid on Notes/Loans - 5100-830					
0026 Operating Transfers In (Out)/Residual Equity Trans					
0027 Operating Transfers In (Out) Primary Government / Comp Unit					
0028 Receipts From Refund of Prior Year Expenditures - 6991					
0029 Special and Extraordinary Gains (losses)					
0030 Receipts from Insurance Recoveries -9990					
Net Cash Prov By (Used for) Non-Capital Financing Activities	\$5,023,471			\$5,023,471	
Cash Flows From Capital and Related Financing Activities					
0031 Payments For Fac Acq, Const, and Imp - 4000	(93,057)			(93,057)	
0032 Gain / (Loss) on Sale of Fixed Assets - 6930	(1,732,197)			(1,732,197)	
0033 Proceeds From Extended Term Financing - 9200					
0034 Principal Paid on Financing Agreements					
0035 Interest Paid on Financing Agreements - 5100-830					
0036 (Inc) Dec in Contributed Capital					
Net Cash Prov By (Used for) Capital and Related Financing Activities	(\$1,825,254)			(\$1,825,254)	
Cash Flows From Investing Activities					
0041 Earnings on Investments - 6500	3,763			3,763	
0042 Purchase of Inv Securities / Deposits to Inv Pools					
0043 Receipts From Investment Pool Withdrawals					
0044 Proceeds from Sale and Maturity of Inv Securities					

LEA : 124159002 West Chester Area SD

Printed 1/31/2023 11:11:01 AM

0045 Loans Received (Paid)

Net Cash Prov By (Used for) Investing Activities	\$3,763	\$3,763
---	----------------	----------------

LEA : 124159002 West Chester Area SD

Printed 1/31/2023 11:11:01 AM

	<u>Food Service</u> <u>(51)</u>	<u>Child Care Operations</u> <u>(52)</u>	<u>Other Enterprise</u> <u>(58)</u>	<u>TOTAL</u>	<u>Internal Service</u> <u>(60)</u>
Net Increase (Decrease) in Cash Flows	(62,451)			(62,451)	
0004 Cash and Cash Equivalents Beginning of Year	117,771			117,771	
Cash and Cash Equivalents at Year End	\$55,320			\$55,320	

Reconciliation of Operating Income (Loss) To Net Cash Provided by (Used For) Operating Activities

0005 Operating Income (Loss) per REP	(3,886,594)			(3,886,594)	
Adjustments					
0051 Depreciation and Net Amortization	130,190			130,190	
0052 Provision for Uncollectible Accounts					
0053 Other Adjustments	254,464			254,464	
Effect of Changes in Assets, Liabilities, Deferred Outflows and Deferred Inflows					
0054 (Inc) Dec In Accounts Receivable (0120-0150)	(11,057)			(11,057)	
0055 Advances to Other Funds (0160)					
0056 (Inc) Dec in Inventories (0170)	7,137			7,137	
0057 (Inc) Dec in Prepaid Expenses (0180)					
0058 (Inc) Dec in Other Current or Noncurrent Assets					
0064 Deferred Outflows (0910)					
0059 Inc (Dec) in Accounts Payable (0400-0450)	24,607			24,607	
0060 Inc (Dec) in Accrued Salaries/Benefits (0461)					
0065 Inc (Dec) in Net Pension Liabilities (0570)					
0066 Inc (Dec) in Other Postemp Benefit Oblig (0560)					
0061 Inc (Dec) in Payroll Deductions/Withholding (0462)					
0062 Inc (Dec) in Unearned Revenue (0480)	147,282			147,282	
0063 Inc (Dec) in Other Current or Noncurrent Liabilities	69,540			69,540	
0067 Deferred Inflows (0950)					
Total Adjustments	\$622,163			\$622,163	
Cash Provided By (Used for) Total	(\$3,264,431)			(\$3,264,431)	

COMBINED STATEMENT OF CASH FLOWS
SCHEDULE OF NONCASH INVESTING, CAPITAL, AND FINANCING ACTIVITIES

Explanation of Transaction and Balance Sheet Effect	Amount
Total	

LEA : 124159002 West Chester Area SD

Printed 1/31/2023 11:11:03 AM

Amounts Expressed in Whole Dollars

Private Purpose Trust
(71)

Investment Trust
(72)

Pension Trust
(73)

Student Activity Custodial
(81)

Assets And Deferred Outflows Of Resources

Assets	
0100 Cash and Cash Equivalents	555,387
0110 Investments	
0130 Due From Other Funds	
0140 Due from Other Governments, Primary Government and Component Units	
0150 Other Receivables	
0170 Inventories	
0180 Prepaid Expenses (Expenditures)	
0190 Other Current Assets	
0220 Buildings and Building Improvements (Net)	
0230 Machinery, Equipment and Furniture (Net)	
Total Assets	\$555,387
0910 Deferred Outflows of Resources	
Total Assets And Deferred Outflows Of Resources	\$555,387

LEA : 124159002 West Chester Area SD

Printed 1/31/2023 11:11:03 AM

Amounts Expressed in Whole Dollars	<u>Other Custodial</u> <u>(89)</u>	<u>Fiduciary Component Units</u> <u>(98)</u>	<u>Total Fiduciary Funds</u>
Assets And Deferred Outflows Of Resources			
Assets			
0100 Cash and Cash Equivalents	116,841		672,228
0110 Investments			
0130 Due From Other Funds			
0140 Due from Other Governments, Primary Government and Component Units			
0150 Other Receivables			
0170 Inventories			
0180 Prepaid Expenses (Expenditures)			
0190 Other Current Assets			
0220 Buildings and Building Improvements (Net)			
0230 Machinery, Equipment and Furniture (Net)			
Total Assets	\$116,841		\$672,228
0910 Deferred Outflows of Resources			
Total Assets And Deferred Outflows Of Resources	\$116,841		\$672,228

LEA : 124159002 West Chester Area SD

Printed 1/31/2023 11:11:03 AM

Amounts Expressed in Whole Dollars

Private Purpose Trust
(71)

Investment Trust
(72)

Pension Trust
(73)

Student Activity Custodial
(81)

Liabilities, Deferred Inflows Of Resources And Net Position

Liabilities

0400 Due to Other Funds	
0410 Due to Other Governments, Primary Government and Component Units	
0420 Accounts Payable	
0430 Contracts Payable	
0450 Short-Term Payables	
0460 Payroll Accruals and Withholdings	
0480 Unearned Revenues	
0490 Other Current Liabilities	1,895

Total Liabilities **\$1,895**

0950 Deferred Inflows of Resources

Net Position

0791 Net Investment in Capital Assets	
0009 Restricted Net Position (0792 – 0798)	553,492
0799 Unrestricted Net Position	

Total Net Position **\$553,492**

Total Liabilities, Deferred Inflows Of Resources And Net Position **\$555,387**

LEA : 124159002 West Chester Area SD

Printed 1/31/2023 11:11:03 AM

Amounts Expressed in Whole Dollars

Other Custodial Fiduciary Component Units Total Fiduciary Funds
 (89) (98)

Liabilities, Deferred Inflows Of Resources And Net Position

Liabilities

0400 Due to Other Funds		
0410 Due to Other Governments, Primary Government and Component Units		
0420 Accounts Payable		
0430 Contracts Payable		
0450 Short-Term Payables		
0460 Payroll Accruals and Withholdings		
0480 Unearned Revenues		
0490 Other Current Liabilities	6,884	8,779
Total Liabilities	\$6,884	\$8,779

0950 Deferred Inflows of Resources

Net Position

0791 Net Investment in Capital Assets		
0009 Restricted Net Position (0792 – 0798)	109,957	663,449
0799 Unrestricted Net Position		
Total Net Position	\$109,957	\$663,449
Total Liabilities, Deferred Inflows Of Resources And Net Position	\$116,841	\$672,228

Amounts Expressed in Whole Dollars	<u>Private Purpose Trust</u> (71)	<u>Investment Trust</u> (72)	<u>Pension Trust</u> (73)	<u>Student Activity</u> <u>Custodial</u> (81)	<u>Other Custodial</u> (89)	<u>Fiduciary Component</u> <u>Units</u> (98)
Additions						
0091 Gifts and Contributions	339,928				163,564	
0095 Net Investment Earnings						
0092 Other Additions						
Deductions						
0093 Scholarships Awarded						
0094 Other Deductions	388,457				228,008	
Change In Net Position	(\$48,529)				(\$64,444)	
0006 Net Position – Beginning of Fiscal Year	602,021				174,401	
0007 Net Position Held in Trust for Pension Benefits						
Net Position - End of Fiscal Year	\$553,492				\$109,957	

Amounts Expressed in Whole Dollars	<u>Total Fiduciary Funds</u>
Additions	
0091 Gifts and Contributions	503,492
0095 Net Investment Earnings	
0092 Other Additions	
Deductions	
0093 Scholarships Awarded	
0094 Other Deductions	616,465
Change In Net Position	(\$112,973)
0006 Net Position – Beginning of Fiscal Year	776,422
0007 Net Position Held in Trust for Pension Benefits	
Net Position - End of Fiscal Year	\$663,449

	<u>Revenue Reported In Current Year</u>	<u>Current Year Tax Accrual</u>	<u>Prior Year Tax Accrual</u>	<u>Taxes Collected In Current Year</u>
<u>Revenue from Local Sources</u>				
6111 Current Real Estate Taxes	180,091,668.78			180,091,668.78
6112 Interim Real Estate Taxes	4,054,176.29			4,054,176.29
6113 Public Utility Realty Taxes	203,573.75			203,573.75
6151 Current Act 511 Earned Income Taxes	26,695,069.69	1,062,239.00	943,664.77	26,576,495.46
6153 Current Act 511 Real Estate Transfer Taxes	8,927,899.59	544,585.92	630,306.08	9,013,619.75
6411 Delinquent Real Estate Taxes	3,485,512.46	262,140.83	297,409.85	3,520,781.48
6500 Earnings on Investments	76,772.56			
6700 Revenues from LEA Activities	240,864.00			
6831 Federal Revenue Received from Other Pennsylvania Public LEAs	7,605.00			
6832 Federal IDEA Revenue Received as Pass Through	1,723,177.61			
6910 Rentals	319,728.71			
6920 Contributions and Donations from Private Sources	5,356.78			
6942 Summer School Tuition	50,973.83			
6944 Receipts from Other LEAs in Pennsylvania - Education	40,094.94			
6991 Refunds of a Prior Year Expenditure	2,218.51			
6992 Energy Efficiency Revenues and Incentives	277,824.80			
6999 Other Revenues Not Specified Above	110,606.89			
TOTAL Revenue from Local Sources	\$226,313,124.19	\$1,868,965.75	\$1,871,380.70	\$223,460,315.51

**Revenue Reported
In Current Year**

Revenue from State Sources

7111 Basic Education Funding-Formula	9,575,706.04		
7112 Basic Education Funding-Social Security	3,817,812.68		
7160 Tuition for Orphans Subsidy	103,877.73		
7271 Special Education funds for School-Aged Pupils	5,914,712.59		
7311 Pupil Transportation Subsidy	2,244,105.59		
7312 Nonpublic and Charter School Pupil Transportation Subsidy	764,225.00		
7320 Rental and Sinking Fund Payments / Building Reimbursement Subsidy	1,596,511.28		
7330 Health Services (Medical, Dental, Nurse, Act 25)	250,431.00		
7340 State Property Tax Reduction Allocation	3,596,194.12		
7505 Ready to Learn Block Grant	399,095.00		
7599 Other State Revenue Not Listed Elsewhere in the 7000 Series	18,320.96		
7820 State Share of Retirement Contributions	18,656,790.63		
TOTAL Revenue from State Sources	\$46,937,782.62		

**Revenue Reported
In Current Year**

Revenue from Federal Sources

8514 NCLB, Title I - Improving the Academic Achievement of the Disadvantaged	555,223.00		
8515 NCLB, Title II - Preparing, Training and Recruiting High Quality Teachers and Principals	259,037.85		
8516 NCLB, Title III - Language Instruction for Limited English Proficient and Immigrant Students	144,230.61		
8517 NCLB, Title IV - 21St Century Schools	33,736.00		
8741 Elementary and Secondary School Emergency Relief Fund (ESSER)	21,645.00		
8742 Governor's Emergency Education Relief Fund (GEER)	87,792.99		
8743 ESSER II - Elementary and Secondary School Emergency Relief Fund	553,834.85		
8744 ARP ESSER - Elementary and Secondary School Emergency Relief Fund	1,113,927.77		
8746 ARP IDEA	389,295.82		
8749 Other CARES Act Funding	119,972.48		
8751 ARP ESSER Learning Loss	22,634.88		
8754 ARP ESSER Homeless Children and Youth Funds	2,339.99		
8810 School-Based Access Medicaid Reimbursement Program (SBAP) Reimbursements (Access)	1,116,347.12		
8820 Medical Assistance Reimbursement for Administrative Claiming (Quarterly) Program	40,378.27		
TOTAL Revenue from Federal Sources	\$4,460,396.63		

**Revenue Reported
In Current Year**

Other Financing Sources

9400 Sale of or Compensation for Loss of Fixed Assets	2,750,000.00			
TOTAL Other Financing Sources	\$2,750,000.00			
TOTAL FROM ALL SOURCES	\$280,461,303.44	\$1,868,965.75	\$1,871,380.70	\$223,460,315.51

LEA : 124159002 West Chester Area SD

Printed 1/31/2023 11:11:10 AM

	<u>General Fund (10)</u>	<u>Student Sponsored Activity Fund (21)</u>	<u>Public Purpose Trust (27)</u>	<u>Other Compt Approved (28)</u>	<u>Athletic / Activity (29)</u>	<u>Capital Reserve (690, 1850) (31)</u>
6000 Revenue from Local Sources						
6111 Current Real Estate Taxes	180,091,668.78					
6112 Interim Real Estate Taxes	4,054,176.29					
6113 Public Utility Realty Taxes	203,573.75					
6151 Current Act 511 Earned Income Taxes	26,695,069.69					
6153 Current Act 511 Real Estate Transfer Taxes	8,927,899.59					
6411 Delinquent Real Estate Taxes	3,485,512.46					
6500 Earnings on Investments	76,772.56					
6700 Revenues from LEA Activities	240,864.00					
6831 Federal Revenue Received from Other Pennsylvania Public LEAs	7,605.00					
6832 Federal IDEA Revenue Received as Pass Through	1,723,177.61					
6910 Rentals	319,728.71					
6920 Contributions and Donations from Private Sources	5,356.78					
6942 Summer School Tuition	50,973.83					
6944 Receipts from Other LEAs in Pennsylvania - Education	40,094.94					
6991 Refunds of a Prior Year Expenditure	2,218.51					
6992 Energy Efficiency Revenues and Incentives	277,824.80					
6999 Other Revenues Not Specified Above	110,606.89					
6000 Total Revenue from Local Sources	\$226,313,124.19					
7000 Revenue from State Sources						
7111 Basic Education Funding-Formula	9,575,706.04					
7112 Basic Education Funding-Social Security	3,817,812.68					
7160 Tuition for Orphans Subsidy	103,877.73					
7271 Special Education funds for School-Aged Pupils	5,914,712.59					
7311 Pupil Transportation Subsidy	2,244,105.59					
7312 Nonpublic and Charter School Pupil Transportation Subsidy	764,225.00					
7320 Rental and Sinking Fund Payments / Building Reimbursement Subsidy	1,596,511.28					
7330 Health Services (Medical, Dental, Nurse, Act 25)	250,431.00					
7340 State Property Tax Reduction Allocation	3,596,194.12					
7505 Ready to Learn Block Grant	399,095.00					
7599 Other State Revenue Not Listed Elsewhere in the 7000 Series	18,320.96					
7820 State Share of Retirement Contributions	18,656,790.63					
7000 Total Revenue from State Sources	\$46,937,782.62					
8000 Revenue from Federal Sources						
8514 NCLB, Title I - Improving the Academic Achievement of the Disadvantaged	555,223.00					

LEA : 124159002 West Chester Area SD

Printed 1/31/2023 11:11:10 AM

	<u>Capital Reserve</u> <u>(1431) (32)</u>	<u>Other Capital</u> <u>Projects Fund (39)</u>	<u>Debt Service (40)</u>	<u>Permanent (90)</u>	<u>Total</u>
6000 Revenue from Local Sources					
6111 Current Real Estate Taxes					180,091,668.78
6112 Interim Real Estate Taxes					4,054,176.29
6113 Public Utility Realty Taxes					203,573.75
6151 Current Act 511 Earned Income Taxes					26,695,069.69
6153 Current Act 511 Real Estate Transfer Taxes					8,927,899.59
6411 Delinquent Real Estate Taxes					3,485,512.46
6500 Earnings on Investments	(46,023.00)				30,749.56
6700 Revenues from LEA Activities					240,864.00
6831 Federal Revenue Received from Other Pennsylvania Public LEAs					7,605.00
6832 Federal IDEA Revenue Received as Pass Through					1,723,177.61
6910 Rentals					319,728.71
6920 Contributions and Donations from Private Sources					5,356.78
6942 Summer School Tuition					50,973.83
6944 Receipts from Other LEAs in Pennsylvania - Education					40,094.94
6991 Refunds of a Prior Year Expenditure					2,218.51
6992 Energy Efficiency Revenues and Incentives					277,824.80
6999 Other Revenues Not Specified Above					110,606.89
6000 Total Revenue from Local Sources	(\$46,023.00)				\$226,267,101.19
7000 Revenue from State Sources					
7111 Basic Education Funding-Formula					9,575,706.04
7112 Basic Education Funding-Social Security					3,817,812.68
7160 Tuition for Orphans Subsidy					103,877.73
7271 Special Education funds for School-Aged Pupils					5,914,712.59
7311 Pupil Transportation Subsidy					2,244,105.59
7312 Nonpublic and Charter School Pupil Transportation Subsidy					764,225.00
7320 Rental and Sinking Fund Payments / Building Reimbursement Subsidy					1,596,511.28
7330 Health Services (Medical, Dental, Nurse, Act 25)					250,431.00
7340 State Property Tax Reduction Allocation					3,596,194.12
7505 Ready to Learn Block Grant					399,095.00
7599 Other State Revenue Not Listed Elsewhere in the 7000 Series					18,320.96
7820 State Share of Retirement Contributions					18,656,790.63
7000 Total Revenue from State Sources					\$46,937,782.62
8000 Revenue from Federal Sources					
8514 NCLB, Title I - Improving the Academic Achievement of the Disadvantaged					555,223.00

	<u>General Fund (10)</u>	<u>Student Sponsored Activity Fund (21)</u>	<u>Public Purpose Trust (27)</u>	<u>Other Compt Approved (28)</u>	<u>Athletic / Activity (29)</u>	<u>Capital Reserve (690.1850) (31)</u>
8000 Revenue from Federal Sources						
8515 NCLB, Title II - Preparing, Training and Recruiting High Quality Teachers and Principals	259,037.85					
8516 NCLB, Title III - Language Instruction for Limited English Proficient and Immigrant Students	144,230.61					
8517 NCLB, Title IV - 21st Century Schools	33,736.00					
8741 Elementary and Secondary School Emergency Relief Fund (ESSER)	21,645.00					
8742 Governor's Emergency Education Relief Fund (GEER)	87,792.99					
8743 ESSER II - Elementary and Secondary School Emergency Relief Fund	553,834.85					
8744 ARP ESSER - Elementary and Secondary School Emergency Relief Fund	1,113,927.77					
8746 ARP IDEA	389,295.82					
8749 Other CARES Act Funding	119,972.48					
8751 ARP ESSER Learning Loss	22,634.88					
8754 ARP ESSER Homeless Children and Youth Funds	2,339.99					
8810 School-Based Access Medicaid Reimbursement Program (SBAP) Reimbursements (Access)	1,116,347.12					
8820 Medical Assistance Reimbursement for Administrative Claiming (Quarterly) Program	40,378.27					
8000 Total Revenue from Federal Sources	\$4,460,396.63					
9000 Other Financing Sources						
9120 Proceeds from Refunding of Bonds						
9130 Bond Premiums						
9220 Leases						
9310 General Fund Transfers						
9340 Debt Service Fund Transfers						
9400 Sale of or Compensation for Loss of Fixed Assets	2,750,000.00					
9000 Total Other Financing Sources	\$2,750,000.00					
Total From All Sources	\$280,461,303.44					

	<u>Capital Reserve</u> <u>(1431) (32)</u>	<u>Other Capital</u> <u>Projects Fund (39)</u>	<u>Debt Service (40)</u>	<u>Permanent (90)</u>	<u>Total</u>
8000 Revenue from Federal Sources					
8515 NCLB, Title II - Preparing, Training and Recruiting High Quality Teachers and Principals					259,037.85
8516 NCLB, Title III - Language Instruction for Limited English Proficient and Immigrant Students					144,230.61
8517 NCLB, Title IV - 21st Century Schools					33,736.00
8741 Elementary and Secondary School Emergency Relief Fund (ESSER)					21,645.00
8742 Governor's Emergency Education Relief Fund (GEER)					87,792.99
8743 ESSER II - Elementary and Secondary School Emergency Relief Fund					553,834.85
8744 ARP ESSER - Elementary and Secondary School Emergency Relief Fund					1,113,927.77
8746 ARP IDEA					389,295.82
8749 Other CARES Act Funding					119,972.48
8751 ARP ESSER Learning Loss					22,634.88
8754 ARP ESSER Homeless Children and Youth Funds					2,339.99
8810 School-Based Access Medicaid Reimbursement Program (SBAP) Reimbursements (Access)					1,116,347.12
8820 Medical Assistance Reimbursement for Administrative Claiming (Quarterly) Program					40,378.27
8000 Total Revenue from Federal Sources					\$4,460,396.63
9000 Other Financing Sources					
9120 Proceeds from Refunding of Bonds			30,115,000.00		30,115,000.00
9130 Bond Premiums			4,880,892.00		4,880,892.00
9220 Leases		492,331.00			492,331.00
9310 General Fund Transfers	6,730,104.07				6,730,104.07
9340 Debt Service Fund Transfers		6,242.00			6,242.00
9400 Sale of or Compensation for Loss of Fixed Assets					2,750,000.00
9000 Total Other Financing Sources	\$6,730,104.07	\$498,573.00	\$34,995,892.00		\$44,974,569.07
Total From All Sources	\$6,684,081.07	\$498,573.00	\$34,995,892.00		\$322,639,849.51

	<u>General Fund (10)</u>	<u>Student Sponsored Activity Fund (21)</u>	<u>Public Purpose Trust (27)</u>	<u>Other Compt Approved (28)</u>	<u>Athletic / Activity (29)</u>	<u>Capital Reserve (690. 1850) (31)</u>
Revenue from Local Sources	226,313,124.19					
Revenue from State Sources	46,937,782.62					
Revenue from Federal Sources	4,460,396.63					
Other Financing Sources	2,750,000.00					
Total From All Sources	\$280,461,303.44					

	<u>Capital Reserve (1431)</u> <u>(32)</u>	<u>Other Capital Projects</u> <u>Fund (39)</u>	<u>Debt Service (40)</u>	<u>Permanent (90)</u>	<u>Total</u>
Revenue from Local Sources	(46,023.00)				226,267,101.19
Revenue from State Sources					46,937,782.62
Revenue from Federal Sources					4,460,396.63
Other Financing Sources	6,730,104.07	498,573.00	34,995,892.00		44,974,569.07
Total From All Sources	\$6,684,081.07	\$498,573.00	\$34,995,892.00		\$322,639,849.51

General Fund (10)

1000 Instruction	<u>Total</u>
100 <u>Personnel Services – Salaries</u>	
100 Personnel Services – Salaries	75,031,272.26
Total Personnel Services – Salaries	\$75,031,272.26
200 <u>Personnel Services – Employee Benefits</u>	
210 Group Insurance – Contracted Provider	139,774.80
220 Social Security Contributions	5,428,729.03
230 PSERS Retirement Contributions	26,095,539.27
250 Unemployment Compensation	65,274.39
260 Workers’ Compensation	343,224.89
270 Group Insurance – Self-Insurance	13,116,170.91
299 All Other Employee Benefits	407,084.72
Total Personnel Services – Employee Benefits	\$45,595,798.01
300 <u>Purchased Professional and Technical Services</u>	
310 Official / Administrative Services	69,215.46
322 Professional Educational Services – Ius	5,636,248.15
323 Professional Educational Services – Other Educational Agencies	1,477,634.11
329 Professional Educational Services – Other	5,886,931.36
330 Other Professional Services	1,706,977.27
390 Other Purchased Professional and Technical Services	2,471.54
Total Purchased Professional and Technical Services	\$14,779,477.89
400 <u>Purchased Property Services</u>	
430 Repairs and Maintenance Services	120,050.26
440 Rentals	56,101.69
Total Purchased Property Services	\$176,151.95
500 <u>Other Purchased Services</u>	
510 Student Transportation Services	50,767.99
530 Communications	332,216.17
550 Printing and Binding	16,408.46
561 Tuition To Other School Districts Within the State	149,088.05
562 Tuition To Pennsylvania Charter Schools	7,812,128.70
563 Tuition To Nonpublic Schools	583,876.04
564 Tuition To Career and Technology Centers	2,680,374.87
567 Tuition To Approved Private Schools (APS) and PA Chartered Schools for the Deaf and Blind	1,925,059.40
568 Tuition To Private Residential Rehabilitative Institutions (PRRI) [In-State] and Detention Centers	4,694.18
569 Tuition – Other	498,133.69
580 Travel	53,242.40
594 IU Payment By Withholding for Institutionalized Children’s Programs – Special Classes	16,802.56
Total Other Purchased Services	\$14,122,792.51
600 <u>Supplies</u>	
610 General Supplies	2,093,560.68
630 Food	15,197.80
640 Books and Periodicals	763,442.69
650 Supplies & Fees – Technology Related	1,186,883.51

General Fund (10)

		<u>Total</u>
1000 Instruction		
Total Supplies		\$4,059,084.68
700 Property		
752 Capital Equipment – Original and Additional		25,877.39
Total Property		\$25,877.39
800 Other Objects		
810 Dues and Fees		65,510.11
Total Other Objects		\$65,510.11
Total 1000 Instruction		\$153,855,964.80

General Fund (10)

1100 Regular Programs – Elementary / Secondary

	<u>Elementary</u>	<u>Secondary</u>	<u>Federal</u>	<u>Total</u>
100 Personnel Services – Salaries				
100 Personnel Services – Salaries	28,510,635.71	28,742,560.93	452,330.25	57,705,526.89
Total Personnel Services – Salaries	\$28,510,635.71	\$28,742,560.93	\$452,330.25	\$57,705,526.89
200 Personnel Services – Employee Benefits				
210 Group Insurance – Contracted Provider	54,304.64	53,631.98	919.45	108,856.07
220 Social Security Contributions	2,059,327.50	2,084,244.63	32,547.30	4,176,119.43
230 PSERS Retirement Contributions	9,974,647.97	10,038,692.19	140,741.19	20,154,081.35
250 Unemployment Compensation	25,368.78	25,599.67		50,968.45
260 Workers' Compensation	133,393.41	134,608.15		268,001.56
270 Group Insurance – Self-Insurance	5,239,901.12	4,734,871.19	77,447.45	10,052,219.76
299 All Other Employee Benefits	158,212.26	159,653.14		317,865.40
Total Personnel Services – Employee Benefits	\$17,645,155.68	\$17,231,300.95	\$251,655.39	\$35,128,112.02
300 Purchased Professional and Technical Services				
310 Official / Administrative Services	36,425.60	32,789.86		69,215.46
329 Professional Educational Services – Other	1,322,570.45	1,215,049.37	13,236.02	2,550,855.84
330 Other Professional Services	85,850.17	77,281.26	1,133.76	164,265.19
390 Other Purchased Professional and Technical Services		2,471.54		2,471.54
Total Purchased Professional and Technical Services	\$1,444,846.22	\$1,327,592.03	\$14,369.78	\$2,786,808.03
400 Purchased Property Services				
430 Repairs and Maintenance Services	45,173.99	64,538.27	10,338.00	120,050.26
440 Rentals	26,181.35	28,673.05		54,854.40
Total Purchased Property Services	\$71,355.34	\$93,211.32	\$10,338.00	\$174,904.66
500 Other Purchased Services				
510 Student Transportation Services	3,124.02	22,287.49	6,762.55	32,174.06
530 Communications	174,353.90	155,678.00		330,031.90
550 Printing and Binding	4,427.94	11,760.52		16,188.46
562 Tuition To Pennsylvania Charter Schools	4,703,186.30			4,703,186.30
580 Travel	5,964.14	15,761.90	192.62	21,918.66
Total Other Purchased Services	\$4,891,056.30	\$205,487.91	\$6,955.17	\$5,103,499.38
600 Supplies				
610 General Supplies	1,063,637.78	573,697.20	154,538.64	1,791,873.62
630 Food	8,899.05	2,615.75		11,514.80
640 Books and Periodicals	300,099.95	320,112.78	138,972.35	759,185.08
650 Supplies & Fees – Technology Related	626,951.31	526,142.89	21,967.42	1,175,061.62
Total Supplies	\$1,999,588.09	\$1,422,568.62	\$315,478.41	\$3,737,635.12
800 Other Objects				
810 Dues and Fees	4,069.34	17,939.58		22,008.92
Total Other Objects	\$4,069.34	\$17,939.58		\$22,008.92
Total 1100 Regular Programs – Elementary / Secondary	\$54,566,706.68	\$49,040,661.34	\$1,051,127.00	\$104,658,495.02

General Fund (10)

1110 Regular Programs

	<u>Elementary</u>	<u>Secondary</u>	<u>Federal</u>	<u>Total</u>
100 Personnel Services – Salaries				
100 Personnel Services – Salaries	28,510,635.71	28,742,560.93	48,250.00	57,301,446.64
Total Personnel Services – Salaries	\$28,510,635.71	\$28,742,560.93	\$48,250.00	\$57,301,446.64
200 Personnel Services – Employee Benefits				
210 Group Insurance – Contracted Provider	54,304.64	53,631.98	167.58	108,104.20
220 Social Security Contributions	2,059,327.50	2,084,244.63	3,332.01	4,146,904.14
230 PSERS Retirement Contributions	9,974,647.97	10,038,692.19	16,858.56	20,030,198.72
250 Unemployment Compensation	25,368.78	25,599.67		50,968.45
260 Workers' Compensation	133,393.41	134,608.15		268,001.56
270 Group Insurance – Self-Insurance	5,239,901.12	4,734,871.19	6,613.44	9,981,385.75
299 All Other Employee Benefits	158,212.26	159,653.14		317,865.40
Total Personnel Services – Employee Benefits	\$17,645,155.68	\$17,231,300.95	\$26,971.59	\$34,903,428.22
300 Purchased Professional and Technical Services				
310 Official / Administrative Services	36,425.60	32,789.86		69,215.46
329 Professional Educational Services – Other	1,322,570.45	1,215,049.37	11,909.56	2,549,529.38
330 Other Professional Services	85,850.17	77,281.26		163,131.43
390 Other Purchased Professional and Technical Services		2,471.54		2,471.54
Total Purchased Professional and Technical Services	\$1,444,846.22	\$1,327,592.03	\$11,909.56	\$2,784,347.81
400 Purchased Property Services				
430 Repairs and Maintenance Services	45,173.99	64,538.27	10,338.00	120,050.26
440 Rentals	26,181.35	28,673.05		54,854.40
Total Purchased Property Services	\$71,355.34	\$93,211.32	\$10,338.00	\$174,904.66
500 Other Purchased Services				
510 Student Transportation Services	3,124.02	22,287.49		25,411.51
530 Communications	174,353.90	155,678.00		330,031.90
550 Printing and Binding	4,427.94	11,760.52		16,188.46
562 Tuition To Pennsylvania Charter Schools	4,703,186.30			4,703,186.30
580 Travel	5,964.14	15,761.90	192.62	21,918.66
Total Other Purchased Services	\$4,891,056.30	\$205,487.91	\$192.62	\$5,096,736.83
600 Supplies				
610 General Supplies	1,063,637.78	573,697.20	146,885.07	1,784,220.05
630 Food	8,899.05	2,615.75		11,514.80
640 Books and Periodicals	300,099.95	320,112.78	138,972.35	759,185.08
650 Supplies & Fees – Technology Related	626,951.31	526,142.89	8,036.42	1,161,130.62
Total Supplies	\$1,999,588.09	\$1,422,568.62	\$293,893.84	\$3,716,050.55
800 Other Objects				
810 Dues and Fees	4,069.34	17,939.58		22,008.92
Total Other Objects	\$4,069.34	\$17,939.58		\$22,008.92
Total 1110 Regular Programs	\$54,566,706.68	\$49,040,661.34	\$391,555.61	\$103,998,923.63

General Fund (10)

	<u>Elementary</u>	<u>Secondary</u>	<u>Federal</u>	<u>Total</u>
1190 Federally-Funded Regular Programs				
100 Personnel Services – Salaries				
100 Personnel Services – Salaries			404,080.25	404,080.25
Total Personnel Services – Salaries			\$404,080.25	\$404,080.25
200 Personnel Services – Employee Benefits				
210 Group Insurance – Contracted Provider			751.87	751.87
220 Social Security Contributions			29,215.29	29,215.29
230 PSERS Retirement Contributions			123,882.63	123,882.63
270 Group Insurance – Self-Insurance			70,834.01	70,834.01
Total Personnel Services – Employee Benefits			\$224,683.80	\$224,683.80
300 Purchased Professional and Technical Services				
329 Professional Educational Services – Other			1,326.46	1,326.46
330 Other Professional Services			1,133.76	1,133.76
Total Purchased Professional and Technical Services			\$2,460.22	\$2,460.22
500 Other Purchased Services				
510 Student Transportation Services			6,762.55	6,762.55
Total Other Purchased Services			\$6,762.55	\$6,762.55
600 Supplies				
610 General Supplies			7,653.57	7,653.57
650 Supplies & Fees – Technology Related			13,931.00	13,931.00
Total Supplies			\$21,584.57	\$21,584.57
Total 1190 Federally-Funded Regular Programs			\$659,571.39	\$659,571.39

General Fund (10)

1200 Special Programs – Elementary / Secondary

	<u>Elementary</u>	<u>Secondary</u>	<u>Federal</u>	<u>Total</u>
100 Personnel Services – Salaries				
100 Personnel Services – Salaries	7,743,735.25	6,619,715.35	101,880.51	14,465,331.11
Total Personnel Services – Salaries	\$7,743,735.25	\$6,619,715.35	\$101,880.51	\$14,465,331.11
200 Personnel Services – Employee Benefits				
210 Group Insurance – Contracted Provider	14,774.38	11,957.90	95.61	26,827.89
220 Social Security Contributions	553,169.06	483,474.56	7,239.47	1,043,883.09
230 PSERS Retirement Contributions	2,652,265.09	2,271,480.28	35,361.07	4,959,106.44
250 Unemployment Compensation	6,670.24	5,655.07		12,325.31
260 Workers' Compensation	35,073.31	29,735.58		64,808.89
270 Group Insurance – Self-Insurance	1,585,277.61	1,089,757.70	15,767.24	2,690,802.55
299 All Other Employee Benefits	41,599.02	35,268.15		76,867.17
Total Personnel Services – Employee Benefits	\$4,888,828.71	\$3,927,329.24	\$58,463.39	\$8,874,621.34
300 Purchased Professional and Technical Services				
322 Professional Educational Services – Ius	540,263.64	3,150,906.72	1,740,609.65	5,431,780.01
323 Professional Educational Services – Other Educational Agencies	777,625.34	700,008.77		1,477,634.11
329 Professional Educational Services – Other	1,284,796.70	1,156,558.14	893,929.02	3,335,283.86
330 Other Professional Services	625,813.70	674,027.45	242,870.93	1,542,712.08
Total Purchased Professional and Technical Services	\$3,228,499.38	\$5,681,501.08	\$2,877,409.60	\$11,787,410.06
400 Purchased Property Services				
440 Rentals	337.21	303.55	606.53	1,247.29
Total Purchased Property Services	\$337.21	\$303.55	\$606.53	\$1,247.29
500 Other Purchased Services				
510 Student Transportation Services	3,853.50	5,221.28	2,811.96	11,886.74
530 Communications	662.94	596.76	924.57	2,184.27
550 Printing and Binding	115.78	104.22		220.00
561 Tuition To Other School Districts Within the State		77,115.10		77,115.10
562 Tuition To Pennsylvania Charter Schools	3,108,942.40			3,108,942.40
563 Tuition To Nonpublic Schools		576,941.04		576,941.04
567 Tuition To Approved Private Schools (APS) and PA Chartered Schools for the Deaf and Blind	1,013,089.06	911,970.34		1,925,059.40
568 Tuition To Private Residential Rehabilitative Institutions (PRRI) [In-State] and Detention Centers	2,470.38	2,223.80		4,694.18
569 Tuition – Other	262,149.73	235,983.96		498,133.69
580 Travel	3,450.50	3,106.09	8,672.88	15,229.47
594 IU Payment By Withholding for Institutionalized Children's Programs – Special Classes	8,842.58	7,959.98		16,802.56
Total Other Purchased Services	\$4,403,576.87	\$1,821,222.57	\$12,409.41	\$6,237,208.85
600 Supplies				
610 General Supplies	10,796.47	29,802.79	158,538.65	199,137.91
630 Food	214.48	193.05	3,275.47	3,683.00
640 Books and Periodicals	203.88	2,213.27	1,460.58	3,877.73
650 Supplies & Fees – Technology Related	5,818.32	5,237.57		11,055.89
Total Supplies	\$17,033.15	\$37,446.68	\$163,274.70	\$217,754.53
800 Other Objects				
810 Dues and Fees	6,199.60	6,730.85	28,720.74	41,651.19

General Fund (10)

1200 Special Programs – Elementary / Secondary

	<u>Elementary</u>	<u>Secondary</u>	<u>Federal</u>	<u>Total</u>
Total Other Objects	\$6,199.60	\$6,730.85	\$28,720.74	\$41,651.19
Total 1200 Special Programs – Elementary / Secondary	\$20,288,210.17	\$18,094,249.32	\$3,242,764.88	\$41,625,224.37

General Fund (10)

1210 Life Skills Support

	<u>Elementary</u>	<u>Secondary</u>	<u>Federal</u>	<u>Total</u>
100 Personnel Services – Salaries				
100 Personnel Services – Salaries	310,674.30	206,450.50		517,124.80
Total Personnel Services – Salaries	\$310,674.30	\$206,450.50		\$517,124.80
200 Personnel Services – Employee Benefits				
210 Group Insurance – Contracted Provider	647.16	384.87		1,032.03
220 Social Security Contributions	21,141.61	14,876.38		36,017.99
230 PSERS Retirement Contributions	106,882.57	71,254.95		178,137.52
250 Unemployment Compensation	284.76	187.98		472.74
260 Workers' Compensation	1,497.28	988.48		2,485.76
270 Group Insurance – Self-Insurance	89,510.82	43,748.49		133,259.31
299 All Other Employee Benefits	1,775.88	1,172.40		2,948.28
Total Personnel Services – Employee Benefits	\$221,740.08	\$132,613.55		\$354,353.63
300 Purchased Professional and Technical Services				
322 Professional Educational Services – lus		133,749.96	558,263.67	692,013.63
Total Purchased Professional and Technical Services		\$133,749.96	\$558,263.67	\$692,013.63
500 Other Purchased Services				
510 Student Transportation Services		1,936.76		1,936.76
Total Other Purchased Services		\$1,936.76		\$1,936.76
600 Supplies				
610 General Supplies			6,069.63	6,069.63
Total Supplies			\$6,069.63	\$6,069.63
Total 1210 Life Skills Support	\$532,414.38	\$474,750.77	\$564,333.30	\$1,571,498.45

General Fund (10)

1220 Sensory Support

	<u>Elementary</u>	<u>Secondary</u>	<u>Federal</u>	<u>Total</u>
100 Personnel Services – Salaries				
100 Personnel Services – Salaries	619,177.46	557,375.91		1,176,553.37
Total Personnel Services – Salaries	\$619,177.46	\$557,375.91		\$1,176,553.37
200 Personnel Services – Employee Benefits				
210 Group Insurance – Contracted Provider	1,170.10	1,053.26		2,223.36
220 Social Security Contributions	45,075.93	40,576.79		85,652.72
230 PSERS Retirement Contributions	215,073.62	193,606.62		408,680.24
250 Unemployment Compensation	562.00	505.90		1,067.90
260 Workers' Compensation	2,955.12	2,660.14		5,615.26
270 Group Insurance – Self-Insurance	102,721.09	92,468.20		195,189.29
299 All Other Employee Benefits	3,504.94	3,155.09		6,660.03
Total Personnel Services – Employee Benefits	\$371,062.80	\$334,026.00		\$705,088.80
300 Purchased Professional and Technical Services				
322 Professional Educational Services – Ius	12,178.93	10,963.31	679,632.41	702,774.65
330 Other Professional Services	(32.09)	(28.88)		(60.97)
Total Purchased Professional and Technical Services	\$12,146.84	\$10,934.43	\$679,632.41	\$702,713.68
600 Supplies				
610 General Supplies			5,014.05	5,014.05
Total Supplies			\$5,014.05	\$5,014.05
800 Other Objects				
810 Dues and Fees			604.75	604.75
Total Other Objects			\$604.75	\$604.75
Total 1220 Sensory Support	\$1,002,387.10	\$902,336.34	\$685,251.21	\$2,589,974.65

General Fund (10)

1230 Emotional Support

	<u>Elementary</u>	<u>Secondary</u>	<u>Federal</u>	<u>Total</u>
100 Personnel Services – Salaries				
100 Personnel Services – Salaries	791,882.83	1,171,190.02		1,963,072.85
Total Personnel Services – Salaries	\$791,882.83	\$1,171,190.02		\$1,963,072.85
200 Personnel Services – Employee Benefits				
210 Group Insurance – Contracted Provider	1,734.89	2,379.87		4,114.76
220 Social Security Contributions	55,013.22	83,928.33		138,941.55
230 PSERS Retirement Contributions	269,847.06	401,982.36		671,829.42
250 Unemployment Compensation	725.79	1,073.53		1,799.32
260 Workers' Compensation	3,816.32	5,644.76		9,461.08
270 Group Insurance – Self-Insurance	199,301.25	256,876.24		456,177.49
299 All Other Employee Benefits	4,526.38	6,695.01		11,221.39
Total Personnel Services – Employee Benefits	\$534,964.91	\$758,580.10		\$1,293,545.01
300 Purchased Professional and Technical Services				
322 Professional Educational Services – lus		2,074,703.89	38,932.65	2,113,636.54
330 Other Professional Services			664.46	664.46
Total Purchased Professional and Technical Services		\$2,074,703.89	\$39,597.11	\$2,114,301.00
400 Purchased Property Services				
440 Rentals			606.53	606.53
Total Purchased Property Services			\$606.53	\$606.53
500 Other Purchased Services				
510 Student Transportation Services	2,065.75	514.87	2,811.96	5,392.58
530 Communications			924.57	924.57
561 Tuition To Other School Districts Within the State		77,115.10		77,115.10
Total Other Purchased Services	\$2,065.75	\$77,629.97	\$3,736.53	\$83,432.25
600 Supplies				
610 General Supplies		7,188.81	12,367.73	19,556.54
640 Books and Periodicals		260.98		260.98
Total Supplies		\$7,449.79	\$12,367.73	\$19,817.52
Total 1230 Emotional Support	\$1,328,913.49	\$4,089,553.77	\$56,307.90	\$5,474,775.16

General Fund (10)

1240 Academic Support

	<u>Elementary</u>	<u>Secondary</u>	<u>Federal</u>	<u>Total</u>
100 Personnel Services – Salaries				
100 Personnel Services – Salaries	4,788,563.77	3,640,172.08		8,428,735.85
Total Personnel Services – Salaries	\$4,788,563.77	\$3,640,172.08		\$8,428,735.85
200 Personnel Services – Employee Benefits				
210 Group Insurance – Contracted Provider	9,897.24	7,185.35		17,082.59
220 Social Security Contributions	341,067.39	266,455.17		607,522.56
230 PSERS Retirement Contributions	1,650,715.11	1,259,496.68		2,910,211.79
250 Unemployment Compensation	4,387.54	3,338.18		7,725.72
260 Workers' Compensation	23,070.50	17,552.87		40,623.37
270 Group Insurance – Self-Insurance	1,056,766.14	609,227.09		1,665,993.23
299 All Other Employee Benefits	27,362.98	20,818.72		48,181.70
Total Personnel Services – Employee Benefits	\$3,113,266.90	\$2,184,074.06		\$5,297,340.96
300 Purchased Professional and Technical Services				
322 Professional Educational Services – Ius		530,323.53		530,323.53
329 Professional Educational Services – Other	4,430.92	3,988.62		8,419.54
330 Other Professional Services		110,677.65		110,677.65
Total Purchased Professional and Technical Services	\$4,430.92	\$644,989.80		\$649,420.72
500 Other Purchased Services				
510 Student Transportation Services	1,145.84	1,091.48		2,237.32
563 Tuition To Nonpublic Schools		576,941.04		576,941.04
Total Other Purchased Services	\$1,145.84	\$578,032.52		\$579,178.36
600 Supplies				
610 General Supplies	3,190.00	15,766.82	100,991.59	119,948.41
640 Books and Periodicals	203.88	1,952.29		2,156.17
Total Supplies	\$3,393.88	\$17,719.11	\$100,991.59	\$122,104.58
800 Other Objects				
810 Dues and Fees	6,084.11	6,626.89		12,711.00
Total Other Objects	\$6,084.11	\$6,626.89		\$12,711.00
Total 1240 Academic Support	\$7,916,885.42	\$7,071,614.46	\$100,991.59	\$15,089,491.47

General Fund (10)

	<u>Elementary</u>	<u>Secondary</u>	<u>Federal</u>	<u>Total</u>
1241 Learning Support – Public				
100 Personnel Services – Salaries				
100 Personnel Services – Salaries	3,839,737.06	3,190,836.68		7,030,573.74
Total Personnel Services – Salaries	\$3,839,737.06	\$3,190,836.68		\$7,030,573.74
200 Personnel Services – Employee Benefits				
210 Group Insurance – Contracted Provider	8,133.83	6,305.73		14,439.56
220 Social Security Contributions	271,535.62	233,319.19		504,854.81
230 PSERS Retirement Contributions	1,319,996.73	1,102,836.04		2,422,832.77
250 Unemployment Compensation	3,518.21	2,927.07		6,445.28
260 Workers' Compensation	18,499.43	15,391.18		33,890.61
270 Group Insurance – Self-Insurance	900,815.46	547,000.99		1,447,816.45
299 All Other Employee Benefits	21,941.42	18,254.84		40,196.26
Total Personnel Services – Employee Benefits	\$2,544,440.70	\$1,926,035.04		\$4,470,475.74
300 Purchased Professional and Technical Services				
322 Professional Educational Services – Ius		530,323.53		530,323.53
330 Other Professional Services		110,677.65		110,677.65
Total Purchased Professional and Technical Services		\$641,001.18		\$641,001.18
500 Other Purchased Services				
563 Tuition To Nonpublic Schools		576,941.04		576,941.04
Total Other Purchased Services		\$576,941.04		\$576,941.04
600 Supplies				
610 General Supplies	1,275.98	12,249.73	100,991.59	114,517.30
640 Books and Periodicals		1,357.72		1,357.72
Total Supplies	\$1,275.98	\$13,607.45	\$100,991.59	\$115,875.02
800 Other Objects				
810 Dues and Fees	4,950.00	4,950.00		9,900.00
Total Other Objects	\$4,950.00	\$4,950.00		\$9,900.00
Total 1241 Learning Support – Public	\$6,390,403.74	\$6,353,371.39	\$100,991.59	\$12,844,766.72

General Fund (10)

	<u>Elementary</u>	<u>Secondary</u>	<u>Federal</u>	<u>Total</u>
1243 Gifted Support				
100 Personnel Services – Salaries				
100 Personnel Services – Salaries	948,826.71	449,335.40		1,398,162.11
Total Personnel Services – Salaries	\$948,826.71	\$449,335.40		\$1,398,162.11
200 Personnel Services – Employee Benefits				
210 Group Insurance – Contracted Provider	1,763.41	879.62		2,643.03
220 Social Security Contributions	69,531.77	33,135.98		102,667.75
230 PSERS Retirement Contributions	330,718.38	156,660.64		487,379.02
250 Unemployment Compensation	869.33	411.11		1,280.44
260 Workers' Compensation	4,571.07	2,161.69		6,732.76
270 Group Insurance – Self-Insurance	155,950.68	62,226.10		218,176.78
299 All Other Employee Benefits	5,421.56	2,563.88		7,985.44
Total Personnel Services – Employee Benefits	\$568,826.20	\$258,039.02		\$826,865.22
300 Purchased Professional and Technical Services				
329 Professional Educational Services – Other	4,430.92	3,988.62		8,419.54
Total Purchased Professional and Technical Services	\$4,430.92	\$3,988.62		\$8,419.54
500 Other Purchased Services				
510 Student Transportation Services	1,145.84	1,091.48		2,237.32
Total Other Purchased Services	\$1,145.84	\$1,091.48		\$2,237.32
600 Supplies				
610 General Supplies	1,914.02	3,517.09		5,431.11
640 Books and Periodicals	203.88	594.57		798.45
Total Supplies	\$2,117.90	\$4,111.66		\$6,229.56
800 Other Objects				
810 Dues and Fees	1,134.11	1,676.89		2,811.00
Total Other Objects	\$1,134.11	\$1,676.89		\$2,811.00
Total 1243 Gifted Support	\$1,526,481.68	\$718,243.07		\$2,244,724.75

General Fund (10)

1260 Physical Support

300 Purchased Professional and Technical Services

	<u>Elementary</u>	<u>Secondary</u>	<u>Federal</u>	<u>Total</u>
322 Professional Educational Services – Ius	70,180.10	63,175.25	7,605.00	140,960.35
323 Professional Educational Services – Other Educational Agencies	505,746.53	455,266.81		961,013.34
Total Purchased Professional and Technical Services	\$575,926.63	\$518,442.06	\$7,605.00	\$1,101,973.69

600 Supplies

610 General Supplies	2,716.18	2,445.06		5,161.24
Total Supplies	\$2,716.18	\$2,445.06		\$5,161.24
Total 1260 Physical Support	\$578,642.81	\$520,887.12	\$7,605.00	\$1,107,134.93

General Fund (10)

	<u>Elementary</u>	<u>Secondary</u>	<u>Federal</u>	<u>Total</u>
1270 Multi-Handicapped Support				
100 Personnel Services – Salaries				
100 Personnel Services – Salaries	283,229.97	48,089.13		331,319.10
Total Personnel Services – Salaries	\$283,229.97	\$48,089.13		\$331,319.10
200 Personnel Services – Employee Benefits				
210 Group Insurance – Contracted Provider	580.98	93.78		674.76
220 Social Security Contributions	20,125.54	3,529.22		23,654.76
230 PSERS Retirement Contributions	98,715.04	15,985.83		114,700.87
250 Unemployment Compensation	259.89	43.18		303.07
260 Workers' Compensation	1,366.57	227.07		1,593.64
270 Group Insurance – Self-Insurance	60,038.29	3,944.14		63,982.43
299 All Other Employee Benefits	1,620.83	269.32		1,890.15
Total Personnel Services – Employee Benefits	\$182,707.14	\$24,092.54		\$206,799.68
300 Purchased Professional and Technical Services				
322 Professional Educational Services – lus		265,783.83		265,783.83
Total Purchased Professional and Technical Services		\$265,783.83		\$265,783.83
500 Other Purchased Services				
510 Student Transportation Services	457.71	1,512.37		1,970.08
Total Other Purchased Services	\$457.71	\$1,512.37		\$1,970.08
600 Supplies				
610 General Supplies			8,499.43	8,499.43
Total Supplies			\$8,499.43	\$8,499.43
Total 1270 Multi-Handicapped Support	\$466,394.82	\$339,477.87	\$8,499.43	\$814,372.12

General Fund (10)

1280 Early Intervention Support

300 Purchased Professional and Technical Services

322 Professional Educational Services – lus

Total Purchased Professional and Technical Services

Total 1280 Early Intervention Support

Elementary

Secondary

Federal

Total

158,128.86

158,128.86

\$158,128.86

\$158,128.86

\$158,128.86

\$158,128.86

General Fund (10)

	<u>Elementary</u>	<u>Secondary</u>	<u>Federal</u>	<u>Total</u>
1290 Special Programs - Other Support				
100 Personnel Services – Salaries				
100 Personnel Services – Salaries	950,206.92	996,437.71	101,880.51	2,048,525.14
Total Personnel Services – Salaries	\$950,206.92	\$996,437.71	\$101,880.51	\$2,048,525.14
200 Personnel Services – Employee Benefits				
210 Group Insurance – Contracted Provider	744.01	860.77	95.61	1,700.39
220 Social Security Contributions	70,745.37	74,108.67	7,239.47	152,093.51
230 PSERS Retirement Contributions	311,031.69	329,153.84	35,361.07	675,546.60
250 Unemployment Compensation	450.26	506.30		956.56
260 Workers' Compensation	2,367.52	2,662.26		5,029.78
270 Group Insurance – Self-Insurance	76,940.02	83,493.54	15,767.24	176,200.80
299 All Other Employee Benefits	2,808.01	3,157.61		5,965.62
Total Personnel Services – Employee Benefits	\$465,086.88	\$493,942.99	\$58,463.39	\$1,017,493.26
300 Purchased Professional and Technical Services				
322 Professional Educational Services – Ius	299,775.75	72,206.95	456,175.92	828,158.62
323 Professional Educational Services – Other Educational Agencies	271,878.81	244,741.96		516,620.77
329 Professional Educational Services – Other	1,280,365.78	1,152,569.52	893,929.02	3,326,864.32
330 Other Professional Services	625,845.79	563,378.68	242,206.47	1,431,430.94
Total Purchased Professional and Technical Services	\$2,477,866.13	\$2,032,897.11	\$1,592,311.41	\$6,103,074.65
400 Purchased Property Services				
440 Rentals	337.21	303.55		640.76
Total Purchased Property Services	\$337.21	\$303.55		\$640.76
500 Other Purchased Services				
510 Student Transportation Services	184.20	165.80		350.00
530 Communications	662.94	596.76		1,259.70
550 Printing and Binding	115.78	104.22		220.00
562 Tuition To Pennsylvania Charter Schools	3,108,942.40			3,108,942.40
567 Tuition To Approved Private Schools (APS) and PA Chartered Schools for the Deaf and Blind	1,013,089.06	911,970.34		1,925,059.40
568 Tuition To Private Residential Rehabilitative Institutions (PRRI) [In-State] and Detention Centers	2,470.38	2,223.80		4,694.18
569 Tuition – Other	262,149.73	235,983.96		498,133.69
580 Travel	3,450.50	3,106.09	8,672.88	15,229.47
594 IU Payment By Withholding for Institutionalized Children's Programs – Special Classes	8,842.58	7,959.98		16,802.56
Total Other Purchased Services	\$4,399,907.57	\$1,162,110.95	\$8,672.88	\$5,570,691.40
600 Supplies				
610 General Supplies	4,890.29	4,402.10	25,596.22	34,888.61
630 Food	214.48	193.05	3,275.47	3,683.00
640 Books and Periodicals			1,460.58	1,460.58
650 Supplies & Fees – Technology Related	5,818.32	5,237.57		11,055.89
Total Supplies	\$10,923.09	\$9,832.72	\$30,332.27	\$51,088.08
800 Other Objects				
810 Dues and Fees	115.49	103.96	28,115.99	28,335.44
Total Other Objects	\$115.49	\$103.96	\$28,115.99	\$28,335.44
Total 1290 Special Programs - Other Support	\$8,304,443.29	\$4,695,628.99	\$1,819,776.45	\$14,819,848.73

General Fund (10)

1300 Vocational Education

	<u>Elementary</u>	<u>Secondary</u>	<u>Federal</u>	<u>Total</u>
100 Personnel Services – Salaries				
100 Personnel Services – Salaries		2,149,054.57		2,149,054.57
Total Personnel Services – Salaries		\$2,149,054.57		\$2,149,054.57
200 Personnel Services – Employee Benefits				
210 Group Insurance – Contracted Provider		4,090.84		4,090.84
220 Social Security Contributions		155,377.10		155,377.10
230 PSERS Retirement Contributions		748,398.15		748,398.15
250 Unemployment Compensation		1,971.87		1,971.87
260 Workers' Compensation		10,368.37		10,368.37
270 Group Insurance – Self-Insurance		373,148.60		373,148.60
299 All Other Employee Benefits		12,297.50		12,297.50
Total Personnel Services – Employee Benefits		\$1,305,652.43		\$1,305,652.43
300 Purchased Professional and Technical Services				
329 Professional Educational Services – Other		791.66		791.66
Total Purchased Professional and Technical Services		\$791.66		\$791.66
500 Other Purchased Services				
510 Student Transportation Services		4,171.94		4,171.94
564 Tuition To Career and Technology Centers		2,680,374.87		2,680,374.87
580 Travel		16,094.27		16,094.27
Total Other Purchased Services		\$2,700,641.08		\$2,700,641.08
600 Supplies				
610 General Supplies		84,463.94		84,463.94
640 Books and Periodicals		379.88		379.88
650 Supplies & Fees – Technology Related		766.00		766.00
Total Supplies		\$85,609.82		\$85,609.82
700 Property				
752 Capital Equipment – Original and Additional		25,877.39		25,877.39
Total Property		\$25,877.39		\$25,877.39
800 Other Objects				
810 Dues and Fees		1,850.00		1,850.00
Total Other Objects		\$1,850.00		\$1,850.00
Total 1300 Vocational Education		\$6,269,476.95		\$6,269,476.95

General Fund (10)

	<u>Elementary</u>	<u>Secondary</u>	<u>Federal</u>	<u>Total</u>
1400 Other Instructional Programs – Elementary / Secondary				
100 Personnel Services – Salaries				
100 Personnel Services – Salaries		23,750.85	687,608.84	711,359.69
Total Personnel Services – Salaries		\$23,750.85	\$687,608.84	\$711,359.69
200 Personnel Services – Employee Benefits				
220 Social Security Contributions		1,768.63	51,580.78	53,349.41
230 PSERS Retirement Contributions		7,527.58	226,425.75	233,953.33
250 Unemployment Compensation		8.76		8.76
260 Workers' Compensation		46.07		46.07
299 All Other Employee Benefits		54.65		54.65
Total Personnel Services – Employee Benefits		\$9,405.69	\$278,006.53	\$287,412.22
300 Purchased Professional and Technical Services				
322 Professional Educational Services – lus	136.76	70,392.06		70,528.82
Total Purchased Professional and Technical Services	\$136.76	\$70,392.06		\$70,528.82
500 Other Purchased Services				
510 Student Transportation Services			2,535.25	2,535.25
561 Tuition To Other School Districts Within the State	34,056.88	37,916.07		71,972.95
563 Tuition To Nonpublic Schools		6,935.00		6,935.00
Total Other Purchased Services	\$34,056.88	\$44,851.07	\$2,535.25	\$81,443.20
600 Supplies				
610 General Supplies		13,361.29	1,756.91	15,118.20
Total Supplies		\$13,361.29	\$1,756.91	\$15,118.20
Total 1400 Other Instructional Programs – Elementary / Secondary	\$34,193.64	\$161,760.96	\$969,907.53	\$1,165,862.13

General Fund (10)

1420 Summer School

	<u>Elementary</u>	<u>Secondary</u>	<u>Federal</u>	<u>Total</u>
100 Personnel Services – Salaries				
100 Personnel Services – Salaries		449.67	385,251.63	385,701.30
Total Personnel Services – Salaries		\$449.67	\$385,251.63	\$385,701.30
200 Personnel Services – Employee Benefits				
220 Social Security Contributions		32.84	29,424.09	29,456.93
230 PSERS Retirement Contributions		156.72	120,985.85	121,142.57
Total Personnel Services – Employee Benefits		\$189.56	\$150,409.94	\$150,599.50
600 Supplies				
610 General Supplies			1,756.91	1,756.91
Total Supplies			\$1,756.91	\$1,756.91
Total 1420 Summer School		\$639.23	\$537,418.48	\$538,057.71

General Fund (10)

	<u>Elementary</u>	<u>Secondary</u>	<u>Federal</u>	<u>Total</u>
1430 Homebound Instruction				
100 Personnel Services – Salaries				
100 Personnel Services – Salaries		13,753.01		13,753.01
Total Personnel Services – Salaries		\$13,753.01		\$13,753.01
200 Personnel Services – Employee Benefits				
220 Social Security Contributions		1,029.77		1,029.77
230 PSERS Retirement Contributions		4,048.33		4,048.33
Total Personnel Services – Employee Benefits		\$5,078.10		\$5,078.10
500 Other Purchased Services				
563 Tuition To Nonpublic Schools		6,935.00		6,935.00
Total Other Purchased Services		\$6,935.00		\$6,935.00
Total 1430 Homebound Instruction		\$25,766.11		\$25,766.11

General Fund (10)

	<u>Elementary</u>	<u>Secondary</u>	<u>Federal</u>	<u>Total</u>
1440 Alternative Regular Education Programs				
100 Personnel Services – Salaries				
100 Personnel Services – Salaries		9,548.17		9,548.17
Total Personnel Services – Salaries		\$9,548.17		\$9,548.17
200 Personnel Services – Employee Benefits				
220 Social Security Contributions		706.02		706.02
230 PSERS Retirement Contributions		3,322.53		3,322.53
250 Unemployment Compensation		8.76		8.76
260 Workers' Compensation		46.07		46.07
299 All Other Employee Benefits		54.65		54.65
Total Personnel Services – Employee Benefits		\$4,138.03		\$4,138.03
300 Purchased Professional and Technical Services				
322 Professional Educational Services – lus	136.76	61,902.01		62,038.77
Total Purchased Professional and Technical Services	\$136.76	\$61,902.01		\$62,038.77
500 Other Purchased Services				
561 Tuition To Other School Districts Within the State	34,056.88	30,657.57		64,714.45
Total Other Purchased Services	\$34,056.88	\$30,657.57		\$64,714.45
600 Supplies				
610 General Supplies		13,361.29		13,361.29
Total Supplies		\$13,361.29		\$13,361.29
Total 1440 Alternative Regular Education Programs	\$34,193.64	\$119,607.07		\$153,800.71

General Fund (10)

1441 Adjudicated / Court-Placed Programs	<u>Elementary</u>	<u>Secondary</u>	<u>Federal</u>	<u>Total</u>
300 <u>Purchased Professional and Technical Services</u>				
322 Professional Educational Services – lus	136.76	123.10		259.86
Total Purchased Professional and Technical Services	\$136.76	\$123.10		\$259.86
500 <u>Other Purchased Services</u>				
561 Tuition To Other School Districts Within the State	34,056.88	30,657.57		64,714.45
Total Other Purchased Services	\$34,056.88	\$30,657.57		\$64,714.45
Total 1441 Adjudicated / Court-Placed Programs	\$34,193.64	\$30,780.67		\$64,974.31

General Fund (10)

	<u>Elementary</u>	<u>Secondary</u>	<u>Federal</u>	<u>Total</u>
1442 Alternative Education Programs				
100 Personnel Services – Salaries				
100 Personnel Services – Salaries		9,548.17		9,548.17
Total Personnel Services – Salaries		\$9,548.17		\$9,548.17
200 Personnel Services – Employee Benefits				
220 Social Security Contributions		706.02		706.02
230 PSERS Retirement Contributions		3,322.53		3,322.53
250 Unemployment Compensation		8.76		8.76
260 Workers' Compensation		46.07		46.07
299 All Other Employee Benefits		54.65		54.65
Total Personnel Services – Employee Benefits		\$4,138.03		\$4,138.03
300 Purchased Professional and Technical Services				
322 Professional Educational Services – lus		61,778.91		61,778.91
Total Purchased Professional and Technical Services		\$61,778.91		\$61,778.91
600 Supplies				
610 General Supplies		13,361.29		13,361.29
Total Supplies		\$13,361.29		\$13,361.29
Total 1442 Alternative Education Programs		\$88,826.40		\$88,826.40

General Fund (10)

	<u>Elementary</u>	<u>Secondary</u>	<u>Federal</u>	<u>Total</u>
1490 Additional Other Instructional Programs				
100 Personnel Services – Salaries				
100 Personnel Services – Salaries			302,357.21	302,357.21
Total Personnel Services – Salaries			\$302,357.21	\$302,357.21
200 Personnel Services – Employee Benefits				
220 Social Security Contributions			22,156.69	22,156.69
230 PSERS Retirement Contributions			105,439.90	105,439.90
Total Personnel Services – Employee Benefits			\$127,596.59	\$127,596.59
300 Purchased Professional and Technical Services				
322 Professional Educational Services – Ius		8,490.05		8,490.05
Total Purchased Professional and Technical Services		\$8,490.05		\$8,490.05
500 Other Purchased Services				
510 Student Transportation Services			2,535.25	2,535.25
561 Tuition To Other School Districts Within the State		7,258.50		7,258.50
Total Other Purchased Services		\$7,258.50	\$2,535.25	\$9,793.75
Total 1490 Additional Other Instructional Programs		\$15,748.55	\$432,489.05	\$448,237.60

General Fund (10)

1500 Nonpublic School Programs

Elementary

Secondary

Federal

Total

300 Purchased Professional and Technical Services

322 Professional Educational Services – lus

133,939.32

133,939.32

Total Purchased Professional and Technical Services

\$133,939.32

\$133,939.32

600 Supplies

610 General Supplies

2,967.01

2,967.01

Total Supplies

\$2,967.01

\$2,967.01

Total 1500 Nonpublic School Programs

\$136,906.33

\$136,906.33

General Fund (10)

2000 Support Services

Total

100 Personnel Services – Salaries

100 Personnel Services – Salaries	29,440,065.18
-----------------------------------	---------------

Total Personnel Services – Salaries	\$29,440,065.18
--	------------------------

200 Personnel Services – Employee Benefits

210 Group Insurance – Contracted Provider	42,434.85
220 Social Security Contributions	2,104,709.26
230 PSERS Retirement Contributions	10,137,589.68
240 Tuition Reimbursement	476,576.53
250 Unemployment Compensation	26,199.87
260 Workers' Compensation	137,764.57
270 Group Insurance – Self-Insurance	4,362,731.76
299 All Other Employee Benefits	163,396.92

Total Personnel Services – Employee Benefits	\$17,451,403.44
---	------------------------

300 Purchased Professional and Technical Services

310 Official / Administrative Services	914,550.41
322 Professional Educational Services – Ius	66,644.29
323 Professional Educational Services – Other Educational Agencies	15.00
329 Professional Educational Services – Other	348,195.14
330 Other Professional Services	3,002,270.16
340 Technical Services	44,551.76
350 Security / Safety Services	123,894.98
390 Other Purchased Professional and Technical Services	349,845.92

Total Purchased Professional and Technical Services	\$4,849,967.66
--	-----------------------

400 Purchased Property Services

420 Utility Services	2,393,230.34
430 Repairs and Maintenance Services	785,370.85
440 Rentals	25,215.20

Total Purchased Property Services	\$3,203,816.39
--	-----------------------

500 Other Purchased Services

510 Student Transportation Services	2,763.14
513 Contracted Carriers	11,908,601.08
516 Student Transportation Services From the IU	1,985.50
520 Insurance – General	79,222.26
521 Fire Insurance	203,227.00
522 Automotive Liability Insurance	54,794.00
523 General Property and Liability Insurance	138,682.00
529 Other Insurance	27,207.00
530 Communications	305,188.32
549 Other Advertising/Public Relations	4,097.15
550 Printing and Binding	35,521.98
580 Travel	82,136.02
595 IU Payments By Withholding	130,316.18
599 Other Miscellaneous Purchased Services	850.40

Total Other Purchased Services	\$12,974,592.03
---------------------------------------	------------------------

LEA : 124159002 West Chester Area SD

Printed 1/31/2023 11:11:23 AM

General Fund (10)

2000 Support Services

Total

600 <u>Supplies</u>	
610 General Supplies	1,390,953.86
620 Energy	893,953.56
630 Food	29,871.38
640 Books and Periodicals	65,194.98
650 Supplies & Fees – Technology Related	837,522.21

Total Supplies	\$3,217,495.99
-----------------------	-----------------------

700 <u>Property</u>	
752 Capital Equipment – Original and Additional	217,564.93

Total Property	\$217,564.93
-----------------------	---------------------

800 <u>Other Objects</u>	
810 Dues and Fees	315,525.99
899 Pass-Through Funds	594,722.04

Total Other Objects	\$910,248.03
----------------------------	---------------------

Total 2000 Support Services	\$72,265,153.65
------------------------------------	------------------------

General Fund (10)

	<u>Elementary</u>	<u>Secondary</u>	<u>Federal</u>	<u>Total</u>
2100 Support Services – Students				
100 Personnel Services – Salaries				
100 Personnel Services – Salaries	2,391,800.33	3,101,023.89		6,310,094.70
Total Personnel Services – Salaries	\$2,391,800.33	\$3,101,023.89		\$6,310,094.70
200 Personnel Services – Employee Benefits				
210 Group Insurance – Contracted Provider	4,239.69	5,287.89		11,131.69
220 Social Security Contributions	173,154.19	227,023.03		457,917.24
230 PSERS Retirement Contributions	829,719.88	1,075,195.26		2,190,732.64
250 Unemployment Compensation	2,114.42	2,772.92		5,636.50
260 Workers' Compensation	11,118.06	14,580.53		29,637.84
270 Group Insurance – Self-Insurance	348,329.59	458,024.90		991,134.81
299 All Other Employee Benefits	13,186.66	17,293.40		35,152.24
Total Personnel Services – Employee Benefits	\$1,381,862.49	\$1,800,177.93		\$3,721,342.96
300 Purchased Professional and Technical Services				
322 Professional Educational Services – Ius	27,315.28	24,588.87	13,736.52	65,640.67
329 Professional Educational Services – Other	30,874.95	27,793.21		58,668.16
330 Other Professional Services	53.29	47.96		101.25
390 Other Purchased Professional and Technical Services	19,032.51	17,156.79		39,849.67
Total Purchased Professional and Technical Services	\$77,276.03	\$69,586.83	\$13,736.52	\$164,259.75
400 Purchased Property Services				
440 Rentals	123.76	111.40		235.16
Total Purchased Property Services	\$123.76	\$111.40		\$235.16
500 Other Purchased Services				
510 Student Transportation Services	1,454.15	1,308.99		2,763.14
530 Communications	1,079.38	971.63		7,413.30
550 Printing and Binding	2,141.47	1,927.72		4,069.19
580 Travel	977.78	955.15		4,209.49
Total Other Purchased Services	\$5,652.78	\$5,163.49		\$18,455.12
600 Supplies				
610 General Supplies	30,098.30	33,328.70	2,300.00	66,550.09
630 Food	273.00	245.73		518.73
640 Books and Periodicals	152.42	79.72		232.14
Total Supplies	\$30,523.72	\$33,654.15	\$2,300.00	\$67,300.96
800 Other Objects				
810 Dues and Fees	3,946.47	6,991.53		11,768.00
Total Other Objects	\$3,946.47	\$6,991.53		\$11,768.00
Total 2100 Support Services – Students	\$3,891,185.58	\$5,016,709.22	\$16,036.52	\$10,293,456.65

General Fund (10)

	<u>Elementary</u>	<u>Secondary</u>	<u>Federal</u>	<u>Total</u>
2110 Supervision of Student Services				
100 Personnel Services – Salaries				
100 Personnel Services – Salaries	246,019.61	221,463.78		467,483.39
Total Personnel Services – Salaries	\$246,019.61	\$221,463.78		\$467,483.39
200 Personnel Services – Employee Benefits				
210 Group Insurance – Contracted Provider	438.82	394.97		833.79
220 Social Security Contributions	16,731.79	15,061.74		31,793.53
230 PSERS Retirement Contributions	81,346.47	73,227.08		154,573.55
250 Unemployment Compensation	225.58	203.06		428.64
260 Workers' Compensation	1,186.16	1,067.74		2,253.90
270 Group Insurance – Self-Insurance	27,088.68	24,384.81		51,473.49
299 All Other Employee Benefits	1,406.85	1,266.41		2,673.26
Total Personnel Services – Employee Benefits	\$128,424.35	\$115,605.81		\$244,030.16
300 Purchased Professional and Technical Services				
329 Professional Educational Services – Other	11,093.80	9,986.49		21,080.29
Total Purchased Professional and Technical Services	\$11,093.80	\$9,986.49		\$21,080.29
500 Other Purchased Services				
530 Communications	1,079.38	971.63		2,051.01
580 Travel	325.77	293.25		619.02
Total Other Purchased Services	\$1,405.15	\$1,264.88		\$2,670.03
600 Supplies				
630 Food	31.10	27.98		59.08
Total Supplies	\$31.10	\$27.98		\$59.08
Total 2110 Supervision of Student Services	\$386,974.01	\$348,348.94		\$735,322.95

General Fund (10)

	<u>Elementary</u>	<u>Secondary</u>	<u>Federal</u>	<u>Total</u>
2111 Supervision of Student Services – Head of Component				
100 Personnel Services – Salaries				
100 Personnel Services – Salaries	134,856.71	121,396.33		256,253.04
Total Personnel Services – Salaries	\$134,856.71	\$121,396.33		\$256,253.04
200 Personnel Services – Employee Benefits				
210 Group Insurance – Contracted Provider	335.37	301.88		637.25
220 Social Security Contributions	8,255.88	7,431.84		15,687.72
230 PSERS Retirement Contributions	45,663.92	41,106.10		86,770.02
250 Unemployment Compensation	123.59	111.25		234.84
260 Workers' Compensation	649.86	584.98		1,234.84
270 Group Insurance – Self-Insurance	15,067.14	13,563.21		28,630.35
299 All Other Employee Benefits	770.77	693.83		1,464.60
Total Personnel Services – Employee Benefits	\$70,866.53	\$63,793.09		\$134,659.62
500 Other Purchased Services				
530 Communications	441.96	397.84		839.80
Total Other Purchased Services	\$441.96	\$397.84		\$839.80
Total 2111 Supervision of Student Services – Head of Component	\$206,165.20	\$185,587.26		\$391,752.46

General Fund (10)

2119 Supervision of Student Services – All Other Supervision

	<u>Elementary</u>	<u>Secondary</u>	<u>Federal</u>	<u>Total</u>
100 Personnel Services – Salaries				
100 Personnel Services – Salaries	111,162.90	100,067.45		211,230.35
Total Personnel Services – Salaries	\$111,162.90	\$100,067.45		\$211,230.35
200 Personnel Services – Employee Benefits				
210 Group Insurance – Contracted Provider	103.45	93.09		196.54
220 Social Security Contributions	8,475.91	7,629.90		16,105.81
230 PSERS Retirement Contributions	35,682.55	32,120.98		67,803.53
250 Unemployment Compensation	101.99	91.81		193.80
260 Workers' Compensation	536.30	482.76		1,019.06
270 Group Insurance – Self-Insurance	12,021.54	10,821.60		22,843.14
299 All Other Employee Benefits	636.08	572.58		1,208.66
Total Personnel Services – Employee Benefits	\$57,557.82	\$51,812.72		\$109,370.54
300 Purchased Professional and Technical Services				
329 Professional Educational Services – Other	11,093.80	9,986.49		21,080.29
Total Purchased Professional and Technical Services	\$11,093.80	\$9,986.49		\$21,080.29
500 Other Purchased Services				
530 Communications	637.42	573.79		1,211.21
580 Travel	325.77	293.25		619.02
Total Other Purchased Services	\$963.19	\$867.04		\$1,830.23
600 Supplies				
630 Food	31.10	27.98		59.08
Total Supplies	\$31.10	\$27.98		\$59.08
Total 2119 Supervision of Student Services – All Other Supervision	\$180,808.81	\$162,761.68		\$343,570.49

General Fund (10)

	<u>Elementary</u>	<u>Secondary</u>	<u>Federal</u>	<u>Total</u>
2120 Guidance Services				
100 Personnel Services – Salaries				
100 Personnel Services – Salaries	1,184,265.70	2,354,311.99		3,538,577.69
Total Personnel Services – Salaries	\$1,184,265.70	\$2,354,311.99		\$3,538,577.69
200 Personnel Services – Employee Benefits				
210 Group Insurance – Contracted Provider	2,104.52	4,070.67		6,175.19
220 Social Security Contributions	86,749.53	172,884.85		259,634.38
230 PSERS Retirement Contributions	413,949.95	819,673.30		1,233,623.25
250 Unemployment Compensation	1,056.04	2,132.48		3,188.52
260 Workers' Compensation	5,552.87	11,212.96		16,765.83
270 Group Insurance – Self-Insurance	183,938.79	372,609.01		556,547.80
299 All Other Employee Benefits	6,586.03	13,299.25		19,885.28
Total Personnel Services – Employee Benefits	\$699,937.73	\$1,395,882.52		\$2,095,820.25
300 Purchased Professional and Technical Services				
329 Professional Educational Services – Other	19,781.15	17,806.72		37,587.87
390 Other Purchased Professional and Technical Services		23.97		23.97
Total Purchased Professional and Technical Services	\$19,781.15	\$17,830.69		\$37,611.84
500 Other Purchased Services				
580 Travel	520.71	543.73		1,064.44
Total Other Purchased Services	\$520.71	\$543.73		\$1,064.44
600 Supplies				
610 General Supplies	7,691.20	13,158.12		20,849.32
630 Food	241.90	217.75		459.65
640 Books and Periodicals	152.42	79.72		232.14
Total Supplies	\$8,085.52	\$13,455.59		\$21,541.11
800 Other Objects				
810 Dues and Fees	2,415.56	5,613.44		8,029.00
Total Other Objects	\$2,415.56	\$5,613.44		\$8,029.00
Total 2120 Guidance Services	\$1,915,006.37	\$3,787,637.96		\$5,702,644.33

General Fund (10)

2130 Attendance Services

Elementary

Secondary

Federal

Total

100 Personnel Services – Salaries

100 Personnel Services – Salaries

178,692.06

Total Personnel Services – Salaries

\$178,692.06

200 Personnel Services – Employee Benefits

210 Group Insurance – Contracted Provider

304.58

220 Social Security Contributions

11,659.50

230 PSERS Retirement Contributions

62,136.89

250 Unemployment Compensation

160.63

260 Workers' Compensation

844.64

270 Group Insurance – Self-Insurance

60,423.61

299 All Other Employee Benefits

1,001.79

Total Personnel Services – Employee Benefits

\$136,531.64

Total 2130 Attendance Services

\$315,223.70

General Fund (10)

2140 Psychological Services

	<u>Elementary</u>	<u>Secondary</u>	<u>Federal</u>	<u>Total</u>
100 Personnel Services – Salaries				
100 Personnel Services – Salaries	961,515.02	460,645.77		1,422,160.79
Total Personnel Services – Salaries	\$961,515.02	\$460,645.77		\$1,422,160.79
200 Personnel Services – Employee Benefits				
210 Group Insurance – Contracted Provider	1,696.35	708.65		2,405.00
220 Social Security Contributions	69,672.87	34,402.08		104,074.95
230 PSERS Retirement Contributions	334,423.46	160,550.18		494,973.64
250 Unemployment Compensation	832.80	378.13		1,210.93
260 Workers' Compensation	4,379.03	1,988.28		6,367.31
270 Group Insurance – Self-Insurance	137,302.12	53,392.55		190,694.67
299 All Other Employee Benefits	5,193.78	2,358.22		7,552.00
Total Personnel Services – Employee Benefits	\$553,500.41	\$253,778.09		\$807,278.50
300 Purchased Professional and Technical Services				
322 Professional Educational Services – Ius	27,315.28	24,588.87	13,736.52	65,640.67
390 Other Purchased Professional and Technical Services	19,032.51	17,132.82		36,165.33
Total Purchased Professional and Technical Services	\$46,347.79	\$41,721.69	\$13,736.52	\$101,806.00
500 Other Purchased Services				
580 Travel	131.30	118.17		249.47
Total Other Purchased Services	\$131.30	\$118.17		\$249.47
600 Supplies				
610 General Supplies	22,407.10	20,170.58		42,577.68
Total Supplies	\$22,407.10	\$20,170.58		\$42,577.68
800 Other Objects				
810 Dues and Fees	1,530.91	1,378.09		2,909.00
Total Other Objects	\$1,530.91	\$1,378.09		\$2,909.00
Total 2140 Psychological Services	\$1,585,432.53	\$777,812.39	\$13,736.52	\$2,376,981.44

General Fund (10)

	<u>Elementary</u>	<u>Secondary</u>	<u>Federal</u>	<u>Total</u>
2160 Social Work Services				
100 Personnel Services – Salaries				
100 Personnel Services – Salaries				638,578.42
Total Personnel Services – Salaries				\$638,578.42
200 Personnel Services – Employee Benefits				
210 Group Insurance – Contracted Provider				1,299.53
220 Social Security Contributions				46,080.52
230 PSERS Retirement Contributions				223,680.61
250 Unemployment Compensation				588.53
260 Workers' Compensation				3,094.61
270 Group Insurance – Self-Insurance				124,356.71
299 All Other Employee Benefits				3,670.39
Total Personnel Services – Employee Benefits				\$402,770.90
300 Purchased Professional and Technical Services				
390 Other Purchased Professional and Technical Services				3,660.37
Total Purchased Professional and Technical Services				\$3,660.37
500 Other Purchased Services				
530 Communications				5,362.29
580 Travel				2,276.56
Total Other Purchased Services				\$7,638.85
600 Supplies				
610 General Supplies			2,300.00	3,123.09
Total Supplies			\$2,300.00	\$3,123.09
800 Other Objects				
810 Dues and Fees				830.00
Total Other Objects				\$830.00
Total 2160 Social Work Services			\$2,300.00	\$1,056,601.63

General Fund (10)

	<u>Elementary</u>	<u>Secondary</u>	<u>Federal</u>	<u>Total</u>
2190 Other Student Services				
100 Personnel Services – Salaries				
100 Personnel Services – Salaries		64,602.35		64,602.35
Total Personnel Services – Salaries		\$64,602.35		\$64,602.35
200 Personnel Services – Employee Benefits				
210 Group Insurance – Contracted Provider		113.60		113.60
220 Social Security Contributions		4,674.36		4,674.36
230 PSERS Retirement Contributions		21,744.70		21,744.70
250 Unemployment Compensation		59.25		59.25
260 Workers' Compensation		311.55		311.55
270 Group Insurance – Self-Insurance		7,638.53		7,638.53
299 All Other Employee Benefits		369.52		369.52
Total Personnel Services – Employee Benefits		\$34,911.51		\$34,911.51
300 Purchased Professional and Technical Services				
330 Other Professional Services	53.29	47.96		101.25
Total Purchased Professional and Technical Services	\$53.29	\$47.96		\$101.25
400 Purchased Property Services				
440 Rentals	123.76	111.40		235.16
Total Purchased Property Services	\$123.76	\$111.40		\$235.16
500 Other Purchased Services				
510 Student Transportation Services	1,454.15	1,308.99		2,763.14
550 Printing and Binding	2,141.47	1,927.72		4,069.19
Total Other Purchased Services	\$3,595.62	\$3,236.71		\$6,832.33
Total 2190 Other Student Services	\$3,772.67	\$102,909.93		\$106,682.60

General Fund (10)

2200 Support Services – Instructional Staff

	<u>Elementary</u>	<u>Secondary</u>	<u>Federal</u>	<u>Total</u>
100 Personnel Services – Salaries				
100 Personnel Services – Salaries	1,924,048.50	1,353,924.07	151,393.07	3,429,365.64
Total Personnel Services – Salaries	\$1,924,048.50	\$1,353,924.07	\$151,393.07	\$3,429,365.64
200 Personnel Services – Employee Benefits				
210 Group Insurance – Contracted Provider	2,974.67	1,927.20		4,901.87
220 Social Security Contributions	135,566.98	95,874.56	10,697.09	242,138.63
230 PSERS Retirement Contributions	665,128.41	466,646.21	49,831.11	1,181,605.73
240 Tuition Reimbursement	236,137.31	240,439.22		476,576.53
250 Unemployment Compensation	1,739.30	1,222.00		2,961.30
260 Workers' Compensation	9,145.50	6,425.67		15,571.17
270 Group Insurance – Self-Insurance	297,033.66	167,687.70		464,721.36
299 All Other Employee Benefits	10,847.11	7,621.27		18,468.38
Total Personnel Services – Employee Benefits	\$1,358,572.94	\$987,843.83	\$60,528.20	\$2,406,944.97
300 Purchased Professional and Technical Services				
322 Professional Educational Services – Ius	528.17	475.45		1,003.62
323 Professional Educational Services – Other Educational Agencies	7.90	7.10		15.00
329 Professional Educational Services – Other	45,031.15	44,745.21	43,056.93	132,833.29
350 Security / Safety Services	126.31	113.69		240.00
Total Purchased Professional and Technical Services	\$45,693.53	\$45,341.45	\$43,056.93	\$134,091.91
400 Purchased Property Services				
430 Repairs and Maintenance Services	365.32	328.84		694.16
440 Rentals	94.12	84.72		178.84
Total Purchased Property Services	\$459.44	\$413.56		\$873.00
500 Other Purchased Services				
530 Communications	1,774.73	1,597.56		3,372.29
580 Travel	7,582.09	7,538.48	5,797.33	20,917.90
599 Other Miscellaneous Purchased Services	447.54	402.86		850.40
Total Other Purchased Services	\$9,804.36	\$9,538.90	\$5,797.33	\$25,140.59
600 Supplies				
610 General Supplies	12,178.98	24,138.79		36,317.77
630 Food	3,213.74	2,959.28	539.42	6,712.44
640 Books and Periodicals	28,036.85	33,350.16		61,387.01
650 Supplies & Fees – Technology Related	53,754.39	85,648.91	12,106.00	151,509.30
Total Supplies	\$97,183.96	\$146,097.14	\$12,645.42	\$255,926.52
800 Other Objects				
810 Dues and Fees	2,582.81	2,954.69	184.00	5,721.50
Total Other Objects	\$2,582.81	\$2,954.69	\$184.00	\$5,721.50
Total 2200 Support Services – Instructional Staff	\$3,438,345.54	\$2,546,113.64	\$273,604.95	\$6,258,064.13

General Fund (10)

2210 Supervision of Educational Media Services

500 Other Purchased Services

	<u>Elementary</u>	<u>Secondary</u>	<u>Federal</u>	<u>Total</u>
530 Communications	678.02	610.34		1,288.36
580 Travel	331.01	297.96		628.97
Total Other Purchased Services	\$1,009.03	\$908.30		\$1,917.33

600 Supplies

640 Books and Periodicals	73.66	66.29		139.95
650 Supplies & Fees – Technology Related	312.78	281.56		594.34
Total Supplies	\$386.44	\$347.85		\$734.29

800 Other Objects

810 Dues and Fees	1,439.34	1,295.66		2,735.00
Total Other Objects	\$1,439.34	\$1,295.66		\$2,735.00
Total 2210 Supervision of Educational Media Services	\$2,834.81	\$2,551.81		\$5,386.62

General Fund (10)

2219 Supervision of Educational Media Services – All Other Supervision

	<u>Elementary</u>	<u>Secondary</u>	<u>Federal</u>	<u>Total</u>
500 Other Purchased Services				
530 Communications	678.02	610.34		1,288.36
580 Travel	331.01	297.96		628.97
Total Other Purchased Services	\$1,009.03	\$908.30		\$1,917.33
600 Supplies				
640 Books and Periodicals	73.66	66.29		139.95
650 Supplies & Fees – Technology Related	312.78	281.56		594.34
Total Supplies	\$386.44	\$347.85		\$734.29
800 Other Objects				
810 Dues and Fees	1,439.34	1,295.66		2,735.00
Total Other Objects	\$1,439.34	\$1,295.66		\$2,735.00
Total 2219 Supervision of Educational Media Services – All Other Supervision	\$2,834.81	\$2,551.81		\$5,386.62

General Fund (10)

2220 Technology Support Services

	<u>Elementary</u>	<u>Secondary</u>	<u>Federal</u>	<u>Total</u>
100 Personnel Services – Salaries				
100 Personnel Services – Salaries		103,353.42		103,353.42
Total Personnel Services – Salaries		\$103,353.42		\$103,353.42
200 Personnel Services – Employee Benefits				
210 Group Insurance – Contracted Provider		209.03		209.03
220 Social Security Contributions		7,508.55		7,508.55
230 PSERS Retirement Contributions		36,020.68		36,020.68
250 Unemployment Compensation		94.84		94.84
260 Workers' Compensation		498.68		498.68
270 Group Insurance – Self-Insurance		21,370.50		21,370.50
299 All Other Employee Benefits		591.48		591.48
Total Personnel Services – Employee Benefits		\$66,293.76		\$66,293.76
600 Supplies				
610 General Supplies	988.30	2,496.31		3,484.61
650 Supplies & Fees – Technology Related	209.40	13,634.01		13,843.41
Total Supplies	\$1,197.70	\$16,130.32		\$17,328.02
Total 2220 Technology Support Services	\$1,197.70	\$185,777.50		\$186,975.20

General Fund (10)

	<u>Elementary</u>	<u>Secondary</u>	<u>Federal</u>	<u>Total</u>
2250 School Library Services				
100 Personnel Services – Salaries				
100 Personnel Services – Salaries	1,099,222.87	496,248.13		1,595,471.00
Total Personnel Services – Salaries	\$1,099,222.87	\$496,248.13		\$1,595,471.00
200 Personnel Services – Employee Benefits				
210 Group Insurance – Contracted Provider	2,123.85	952.41		3,076.26
220 Social Security Contributions	78,352.31	35,876.29		114,228.60
230 PSERS Retirement Contributions	382,500.94	172,086.67		554,587.61
250 Unemployment Compensation	1,004.54	455.20		1,459.74
260 Workers' Compensation	5,282.13	2,393.59		7,675.72
270 Group Insurance – Self-Insurance	236,459.40	91,789.30		328,248.70
299 All Other Employee Benefits	6,264.91	2,838.94		9,103.85
Total Personnel Services – Employee Benefits	\$711,988.08	\$306,392.40		\$1,018,380.48
300 Purchased Professional and Technical Services				
329 Professional Educational Services – Other	36,969.85	33,279.79		70,249.64
Total Purchased Professional and Technical Services	\$36,969.85	\$33,279.79		\$70,249.64
600 Supplies				
610 General Supplies	7,337.78	18,943.91		26,281.69
630 Food	96.18	86.57		182.75
640 Books and Periodicals	27,747.44	32,705.85		60,453.29
650 Supplies & Fees – Technology Related	51,326.69	69,476.12		120,802.81
Total Supplies	\$86,508.09	\$121,212.45		\$207,720.54
Total 2250 School Library Services	\$1,934,688.89	\$957,132.77		\$2,891,821.66

General Fund (10)

	<u>Elementary</u>	<u>Secondary</u>	<u>Federal</u>	<u>Total</u>
2260 Instruction and Curriculum Development Services				
100 Personnel Services – Salaries				
100 Personnel Services – Salaries	586,680.60	539,947.33	24,109.23	1,150,737.16
Total Personnel Services – Salaries	\$586,680.60	\$539,947.33	\$24,109.23	\$1,150,737.16
200 Personnel Services – Employee Benefits				
210 Group Insurance – Contracted Provider	675.91	608.32		1,284.23
220 Social Security Contributions	38,853.79	35,961.48	1,786.84	76,602.11
230 PSERS Retirement Contributions	200,240.62	184,375.20	8,423.80	393,039.62
250 Unemployment Compensation	536.81	493.78		1,030.59
260 Workers' Compensation	2,822.53	2,596.46		5,418.99
270 Group Insurance – Self-Insurance	52,805.47	47,534.57		100,340.04
299 All Other Employee Benefits	3,347.70	3,079.58		6,427.28
Total Personnel Services – Employee Benefits	\$299,282.83	\$274,649.39	\$10,210.64	\$584,142.86
300 Purchased Professional and Technical Services				
322 Professional Educational Services – Ius	528.17	475.45		1,003.62
329 Professional Educational Services – Other	1,399.13	5,080.59		6,479.72
Total Purchased Professional and Technical Services	\$1,927.30	\$5,556.04		\$7,483.34
400 Purchased Property Services				
430 Repairs and Maintenance Services	365.32	328.84		694.16
440 Rentals	94.12	84.72		178.84
Total Purchased Property Services	\$459.44	\$413.56		\$873.00
500 Other Purchased Services				
530 Communications	875.73	788.30		1,664.03
580 Travel	4,590.39	3,324.73		7,915.12
599 Other Miscellaneous Purchased Services	447.54	402.86		850.40
Total Other Purchased Services	\$5,913.66	\$4,515.89		\$10,429.55
600 Supplies				
610 General Supplies	1,814.69	2,233.89		4,048.58
630 Food	1,749.04	1,610.19		3,359.23
640 Books and Periodicals	215.75	578.02		793.77
650 Supplies & Fees – Technology Related	1,809.52	1,673.13	2,106.00	5,588.65
Total Supplies	\$5,589.00	\$6,095.23	\$2,106.00	\$13,790.23
800 Other Objects				
810 Dues and Fees	499.84	685.16	184.00	1,369.00
Total Other Objects	\$499.84	\$685.16	\$184.00	\$1,369.00
Total 2260 Instruction and Curriculum Development Services	\$900,352.67	\$831,862.60	\$36,609.87	\$1,768,825.14

General Fund (10)

	<u>Elementary</u>	<u>Secondary</u>	<u>Federal</u>	<u>Total</u>
2270 Instructional Staff Professional Development Services				
100 Personnel Services – Salaries				
100 Personnel Services – Salaries	238,145.03	214,375.19	127,283.84	579,804.06
Total Personnel Services – Salaries	\$238,145.03	\$214,375.19	\$127,283.84	\$579,804.06
200 Personnel Services – Employee Benefits				
210 Group Insurance – Contracted Provider	174.91	157.44		332.35
220 Social Security Contributions	18,360.88	16,528.24	8,910.25	43,799.37
230 PSERS Retirement Contributions	82,386.85	74,163.66	41,407.31	197,957.82
240 Tuition Reimbursement	236,137.31	240,439.22		476,576.53
250 Unemployment Compensation	197.95	178.18		376.13
260 Workers' Compensation	1,040.84	936.94		1,977.78
270 Group Insurance – Self-Insurance	7,768.79	6,993.33		14,762.12
299 All Other Employee Benefits	1,234.50	1,111.27		2,345.77
Total Personnel Services – Employee Benefits	\$347,302.03	\$340,508.28	\$50,317.56	\$738,127.87
300 Purchased Professional and Technical Services				
323 Professional Educational Services – Other Educational Agencies	7.90	7.10		15.00
329 Professional Educational Services – Other	6,662.17	6,384.83	43,056.93	56,103.93
350 Security / Safety Services	126.31	113.69		240.00
Total Purchased Professional and Technical Services	\$6,796.38	\$6,505.62	\$43,056.93	\$56,358.93
500 Other Purchased Services				
530 Communications	220.98	198.92		419.90
580 Travel	2,660.69	3,915.79	5,797.33	12,373.81
Total Other Purchased Services	\$2,881.67	\$4,114.71	\$5,797.33	\$12,793.71
600 Supplies				
610 General Supplies	2,038.21	464.68		2,502.89
630 Food	1,368.52	1,262.52	539.42	3,170.46
650 Supplies & Fees – Technology Related	96.00	584.09	10,000.00	10,680.09
Total Supplies	\$3,502.73	\$2,311.29	\$10,539.42	\$16,353.44
800 Other Objects				
810 Dues and Fees	643.63	973.87		1,617.50
Total Other Objects	\$643.63	\$973.87		\$1,617.50
Total 2270 Instructional Staff Professional Development Services	\$599,271.47	\$568,788.96	\$236,995.08	\$1,405,055.51

General Fund (10)

	<u>Elementary</u>	<u>Secondary</u>	<u>Federal</u>	<u>Total</u>
2300 Support Services – Administration				
100 Personnel Services – Salaries				
100 Personnel Services – Salaries	2,367,844.49	3,632,191.57		7,121,627.53
Total Personnel Services – Salaries	\$2,367,844.49	\$3,632,191.57		\$7,121,627.53
200 Personnel Services – Employee Benefits				
210 Group Insurance – Contracted Provider	3,113.82	3,375.35		7,711.88
220 Social Security Contributions	167,143.85	265,280.34		502,021.57
230 PSERS Retirement Contributions	808,763.07	1,225,151.49		2,404,077.16
250 Unemployment Compensation	2,158.03	3,320.16		6,495.58
260 Workers' Compensation	11,347.35	17,458.15		34,155.17
270 Group Insurance – Self-Insurance	328,627.28	294,464.97		726,035.58
299 All Other Employee Benefits	13,458.60	20,706.39		40,510.01
Total Personnel Services – Employee Benefits	\$1,334,612.00	\$1,829,756.85		\$3,721,006.95
300 Purchased Professional and Technical Services				
310 Official / Administrative Services				914,550.41
329 Professional Educational Services – Other		831.20		11,114.00
330 Other Professional Services		860.00		394,086.21
340 Technical Services				16,202.01
350 Security / Safety Services		1,049.31		7,355.43
390 Other Purchased Professional and Technical Services		525.25		1,673.25
Total Purchased Professional and Technical Services		\$3,265.76		\$1,344,981.31
400 Purchased Property Services				
430 Repairs and Maintenance Services	5,106.37	8,474.32		15,726.23
440 Rentals		132.98		198.35
Total Purchased Property Services	\$5,106.37	\$8,607.30		\$15,924.58
500 Other Purchased Services				
520 Insurance – General				79,222.26
530 Communications	5,893.49	13,881.56		39,250.94
549 Other Advertising/Public Relations				2,911.67
550 Printing and Binding		911.57		29,335.66
580 Travel	815.09	757.38		25,535.51
Total Other Purchased Services	\$6,708.58	\$15,550.51		\$176,256.04
600 Supplies				
610 General Supplies	10,957.63	81,595.68		102,803.80
630 Food	3,153.88	7,499.54		17,750.47
640 Books and Periodicals	274.78	236.28		1,823.64
650 Supplies & Fees – Technology Related	1,524.94			4,501.10
Total Supplies	\$15,911.23	\$89,331.50		\$126,879.01
800 Other Objects				
810 Dues and Fees	8,100.05	2,961.94		225,149.60
Total Other Objects	\$8,100.05	\$2,961.94		\$225,149.60
Total 2300 Support Services – Administration	\$3,738,282.72	\$5,581,665.43		\$12,731,825.02

General Fund (10)

	<u>Elementary</u>	<u>Secondary</u>	<u>Federal</u>	<u>Total</u>
2310 Board Services				
100 Personnel Services – Salaries				
100 Personnel Services – Salaries				7,886.37
Total Personnel Services – Salaries				\$7,886.37
200 Personnel Services – Employee Benefits				
220 Social Security Contributions				577.88
230 PSERS Retirement Contributions				2,748.59
Total Personnel Services – Employee Benefits				\$3,326.47
300 Purchased Professional and Technical Services				
330 Other Professional Services				51,000.00
350 Security / Safety Services				6,306.12
390 Other Purchased Professional and Technical Services				300.00
Total Purchased Professional and Technical Services				\$57,606.12
500 Other Purchased Services				
520 Insurance – General				75,630.50
549 Other Advertising/Public Relations				2,911.67
Total Other Purchased Services				\$78,542.17
600 Supplies				
610 General Supplies				320.92
630 Food				3,933.75
Total Supplies				\$4,254.67
800 Other Objects				
810 Dues and Fees				15,840.42
Total Other Objects				\$15,840.42
Total 2310 Board Services				\$167,456.22

General Fund (10)

	<u>Elementary</u>	<u>Secondary</u>	<u>Federal</u>	<u>Total</u>
2330 Tax Assessment and Collection Services				
200 <u>Personnel Services – Employee Benefits</u>				
220 Social Security Contributions				58.40
Total Personnel Services – Employee Benefits				\$58.40
300 <u>Purchased Professional and Technical Services</u>				
310 Official / Administrative Services				914,550.41
390 Other Purchased Professional and Technical Services				848.00
Total Purchased Professional and Technical Services				\$915,398.41
500 <u>Other Purchased Services</u>				
520 Insurance – General				3,591.76
530 Communications				16,286.70
Total Other Purchased Services				\$19,878.46
800 <u>Other Objects</u>				
810 Dues and Fees				13,967.49
Total Other Objects				\$13,967.49
Total 2330 Tax Assessment and Collection Services				\$949,302.76

General Fund (10)

2350 Legal and Accounting Services

Elementary

Secondary

Federal

Total

300 Purchased Professional and Technical Services

330 Other Professional Services

335,497.65

Total Purchased Professional and Technical Services

\$335,497.65

Total 2350 Legal and Accounting Services

\$335,497.65

General Fund (10)

	<u>Elementary</u>	<u>Secondary</u>	<u>Federal</u>	<u>Total</u>
2360 Office of the Superintendent / Executive Director Services				
100 Personnel Services – Salaries				
100 Personnel Services – Salaries				899,711.37
Total Personnel Services – Salaries				\$899,711.37
200 Personnel Services – Employee Benefits				
210 Group Insurance – Contracted Provider				997.49
220 Social Security Contributions				53,009.80
230 PSERS Retirement Contributions				296,902.75
250 Unemployment Compensation				821.26
260 Workers' Compensation				4,318.36
270 Group Insurance – Self-Insurance				79,778.26
299 All Other Employee Benefits				5,121.82
Total Personnel Services – Employee Benefits				\$440,949.74
300 Purchased Professional and Technical Services				
329 Professional Educational Services – Other				9,992.60
330 Other Professional Services				6,728.56
Total Purchased Professional and Technical Services				\$16,721.16
400 Purchased Property Services				
430 Repairs and Maintenance Services				2,145.54
440 Rentals				65.37
Total Purchased Property Services				\$2,210.91
500 Other Purchased Services				
530 Communications	2,114.39	1,903.32		4,017.71
580 Travel				13,301.72
Total Other Purchased Services	\$2,114.39	\$1,903.32		\$17,319.43
600 Supplies				
610 General Supplies				3,987.40
630 Food				2,816.05
640 Books and Periodicals				1,311.59
Total Supplies				\$8,115.04
800 Other Objects				
810 Dues and Fees				15,614.70
Total Other Objects				\$15,614.70
Total 2360 Office of the Superintendent / Executive Director Services	\$2,114.39	\$1,903.32		\$1,400,642.35

General Fund (10)

	<u>Elementary</u>	<u>Secondary</u>	<u>Federal</u>	<u>Total</u>
2370 Community Relations Services				
100 Personnel Services – Salaries				
100 Personnel Services – Salaries				213,993.73
Total Personnel Services – Salaries				\$213,993.73
200 Personnel Services – Employee Benefits				
210 Group Insurance – Contracted Provider				225.22
220 Social Security Contributions				15,951.30
230 PSERS Retirement Contributions				70,511.26
250 Unemployment Compensation				196.13
260 Workers' Compensation				1,031.31
270 Group Insurance – Self-Insurance				23,165.07
299 All Other Employee Benefits				1,223.20
Total Personnel Services – Employee Benefits				\$112,303.49
300 Purchased Professional and Technical Services				
329 Professional Educational Services – Other				290.20
340 Technical Services				16,202.01
Total Purchased Professional and Technical Services				\$16,492.21
500 Other Purchased Services				
530 Communications				3,189.19
550 Printing and Binding				28,424.09
580 Travel				10,661.32
Total Other Purchased Services				\$42,274.60
600 Supplies				
610 General Supplies				5,942.17
630 Food				347.25
640 Books and Periodicals				0.99
650 Supplies & Fees – Technology Related				2,976.16
Total Supplies				\$9,266.57
800 Other Objects				
810 Dues and Fees				3,665.00
Total Other Objects				\$3,665.00
Total 2370 Community Relations Services				\$397,995.60

General Fund (10)

	<u>Elementary</u>	<u>Secondary</u>	<u>Federal</u>	<u>Total</u>
2380 Office of the Principal Services				
100 Personnel Services – Salaries				
100 Personnel Services – Salaries	2,367,844.49	3,632,191.57		6,000,036.06
Total Personnel Services – Salaries	\$2,367,844.49	\$3,632,191.57		\$6,000,036.06
200 Personnel Services – Employee Benefits				
210 Group Insurance – Contracted Provider	3,113.82	3,375.35		6,489.17
220 Social Security Contributions	167,143.85	265,280.34		432,424.19
230 PSERS Retirement Contributions	808,763.07	1,225,151.49		2,033,914.56
250 Unemployment Compensation	2,158.03	3,320.16		5,478.19
260 Workers' Compensation	11,347.35	17,458.15		28,805.50
270 Group Insurance – Self-Insurance	328,627.28	294,464.97		623,092.25
299 All Other Employee Benefits	13,458.60	20,706.39		34,164.99
Total Personnel Services – Employee Benefits	\$1,334,612.00	\$1,829,756.85		\$3,164,368.85
300 Purchased Professional and Technical Services				
329 Professional Educational Services – Other		831.20		831.20
330 Other Professional Services		860.00		860.00
350 Security / Safety Services		1,049.31		1,049.31
390 Other Purchased Professional and Technical Services		525.25		525.25
Total Purchased Professional and Technical Services		\$3,265.76		\$3,265.76
400 Purchased Property Services				
430 Repairs and Maintenance Services	5,106.37	8,474.32		13,580.69
440 Rentals		132.98		132.98
Total Purchased Property Services	\$5,106.37	\$8,607.30		\$13,713.67
500 Other Purchased Services				
530 Communications	3,779.10	11,978.24		15,757.34
550 Printing and Binding		911.57		911.57
580 Travel	815.09	757.38		1,572.47
Total Other Purchased Services	\$4,594.19	\$13,647.19		\$18,241.38
600 Supplies				
610 General Supplies	10,957.63	81,595.68		92,553.31
630 Food	3,153.88	7,499.54		10,653.42
640 Books and Periodicals	274.78	236.28		511.06
650 Supplies & Fees – Technology Related	1,524.94			1,524.94
Total Supplies	\$15,911.23	\$89,331.50		\$105,242.73
800 Other Objects				
810 Dues and Fees	8,100.05	2,961.94		11,061.99
Total Other Objects	\$8,100.05	\$2,961.94		\$11,061.99
Total 2380 Office of the Principal Services	\$3,736,168.33	\$5,579,762.11		\$9,315,930.44

General Fund (10)

2390 Other Administration Services

Elementary

Secondary

Federal

Total

800 Other Objects

810 Dues and Fees

165,000.00

Total Other Objects

\$165,000.00

Total 2390 Other Administration Services

\$165,000.00

General Fund (10)

	<u>Elementary</u>	<u>Secondary</u>	<u>Federal</u>	<u>Total</u>
2400 Support Services – Pupil Health				
100 Personnel Services – Salaries				
100 Personnel Services – Salaries				1,640,433.14
Total Personnel Services – Salaries				\$1,640,433.14
200 Personnel Services – Employee Benefits				
210 Group Insurance – Contracted Provider				3,285.12
220 Social Security Contributions				115,167.44
230 PSERS Retirement Contributions				545,989.62
250 Unemployment Compensation				1,463.44
260 Workers' Compensation				7,695.18
270 Group Insurance – Self-Insurance				368,958.86
299 All Other Employee Benefits				9,126.94
Total Personnel Services – Employee Benefits				\$1,051,686.60
300 Purchased Professional and Technical Services				
329 Professional Educational Services – Other				48,166.78
330 Other Professional Services				4,000.00
390 Other Purchased Professional and Technical Services				675.00
Total Purchased Professional and Technical Services				\$52,841.78
400 Purchased Property Services				
430 Repairs and Maintenance Services				1,339.70
Total Purchased Property Services				\$1,339.70
500 Other Purchased Services				
530 Communications				582.67
580 Travel				190.65
Total Other Purchased Services				\$773.32
600 Supplies				
610 General Supplies				45,653.23
Total Supplies				\$45,653.23
800 Other Objects				
810 Dues and Fees				300.00
Total Other Objects				\$300.00
Total 2400 Support Services – Pupil Health				\$2,793,027.77

General Fund (10)

2420 Medical Services

Elementary

Secondary

Federal

Total

300 Purchased Professional and Technical Services

330 Other Professional Services

3,000.00

Total Purchased Professional and Technical Services

\$3,000.00

Total 2420 Medical Services

\$3,000.00

General Fund (10)

2430 Dental Services

Elementary

Secondary

Federal

Total

300 Purchased Professional and Technical Services

330 Other Professional Services

1,000.00

Total Purchased Professional and Technical Services

\$1,000.00

Total 2430 Dental Services

\$1,000.00

General Fund (10)

2440 Nursing Services

	<u>Elementary</u>	<u>Secondary</u>	<u>Federal</u>	<u>Total</u>
100 Personnel Services – Salaries				
100 Personnel Services – Salaries				1,529,521.17
Total Personnel Services – Salaries				\$1,529,521.17
200 Personnel Services – Employee Benefits				
210 Group Insurance – Contracted Provider				3,085.04
220 Social Security Contributions				107,921.61
230 PSERS Retirement Contributions				507,467.38
250 Unemployment Compensation				1,361.66
260 Workers' Compensation				7,160.02
270 Group Insurance – Self-Insurance				332,740.27
299 All Other Employee Benefits				8,492.21
Total Personnel Services – Employee Benefits				\$968,228.19
300 Purchased Professional and Technical Services				
329 Professional Educational Services – Other				48,166.78
390 Other Purchased Professional and Technical Services				675.00
Total Purchased Professional and Technical Services				\$48,841.78
400 Purchased Property Services				
430 Repairs and Maintenance Services				1,339.70
Total Purchased Property Services				\$1,339.70
500 Other Purchased Services				
530 Communications				582.67
580 Travel				190.65
Total Other Purchased Services				\$773.32
600 Supplies				
610 General Supplies				45,653.23
Total Supplies				\$45,653.23
800 Other Objects				
810 Dues and Fees				300.00
Total Other Objects				\$300.00
Total 2440 Nursing Services				\$2,594,657.39

General Fund (10)

2450 Nonpublic Health Services

Elementary

Secondary

Federal

Total

100 Personnel Services – Salaries

100 Personnel Services – Salaries

110,911.97

Total Personnel Services – Salaries

\$110,911.97

200 Personnel Services – Employee Benefits

210 Group Insurance – Contracted Provider

200.08

220 Social Security Contributions

7,245.83

230 PSERS Retirement Contributions

38,522.24

250 Unemployment Compensation

101.78

260 Workers' Compensation

535.16

270 Group Insurance – Self-Insurance

36,218.59

299 All Other Employee Benefits

634.73

Total Personnel Services – Employee Benefits

\$83,458.41

Total 2450 Nonpublic Health Services

\$194,370.38

General Fund (10)

	<u>Elementary</u>	<u>Secondary</u>	<u>Federal</u>	<u>Total</u>
2500 Support Services – Business				
100 Personnel Services – Salaries				
100 Personnel Services – Salaries				1,133,846.19
Total Personnel Services – Salaries				\$1,133,846.19
200 Personnel Services – Employee Benefits				
210 Group Insurance – Contracted Provider				2,809.86
220 Social Security Contributions				74,195.13
230 PSERS Retirement Contributions				406,787.14
250 Unemployment Compensation				1,040.41
260 Workers' Compensation				5,470.67
270 Group Insurance – Self-Insurance				187,419.64
299 All Other Employee Benefits				6,488.55
Total Personnel Services – Employee Benefits				\$684,211.40
300 Purchased Professional and Technical Services				
329 Professional Educational Services – Other				3,646.00
330 Other Professional Services				8,300.00
Total Purchased Professional and Technical Services				\$11,946.00
400 Purchased Property Services				
430 Repairs and Maintenance Services				796.01
440 Rentals				4,327.06
Total Purchased Property Services				\$5,123.07
500 Other Purchased Services				
530 Communications				13,901.11
549 Other Advertising/Public Relations				1,185.48
580 Travel				606.59
Total Other Purchased Services				\$15,693.18
600 Supplies				
610 General Supplies				21,796.76
640 Books and Periodicals				862.49
Total Supplies				\$22,659.25
800 Other Objects				
810 Dues and Fees				30,082.74
Total Other Objects				\$30,082.74
Total 2500 Support Services – Business				\$1,903,561.83

General Fund (10)

	<u>Elementary</u>	<u>Secondary</u>	<u>Federal</u>	<u>Total</u>
2510 Fiscal Services				
100 Personnel Services – Salaries				
100 Personnel Services – Salaries				1,024,743.49
Total Personnel Services – Salaries				\$1,024,743.49
200 Personnel Services – Employee Benefits				
210 Group Insurance – Contracted Provider				2,600.31
220 Social Security Contributions				66,607.00
230 PSERS Retirement Contributions				372,092.71
250 Unemployment Compensation				940.34
260 Workers' Compensation				4,944.47
270 Group Insurance – Self-Insurance				159,435.14
299 All Other Employee Benefits				5,864.44
Total Personnel Services – Employee Benefits				\$612,484.41
300 Purchased Professional and Technical Services				
329 Professional Educational Services – Other				3,646.00
330 Other Professional Services				8,300.00
Total Purchased Professional and Technical Services				\$11,946.00
400 Purchased Property Services				
430 Repairs and Maintenance Services				796.01
440 Rentals				881.69
Total Purchased Property Services				\$1,677.70
500 Other Purchased Services				
530 Communications				7,724.72
549 Other Advertising/Public Relations				1,185.48
580 Travel				606.59
Total Other Purchased Services				\$9,516.79
600 Supplies				
610 General Supplies				10,892.85
640 Books and Periodicals				862.49
Total Supplies				\$11,755.34
800 Other Objects				
810 Dues and Fees				30,032.74
Total Other Objects				\$30,032.74
Total 2510 Fiscal Services				\$1,702,156.47

General Fund (10)

	<u>Elementary</u>	<u>Secondary</u>	<u>Federal</u>	<u>Total</u>
2511 Supervision of Fiscal Services - Head of Component				
100 <u>Personnel Services – Salaries</u>				
100 Personnel Services – Salaries				348,506.69
Total Personnel Services – Salaries				\$348,506.69
200 <u>Personnel Services – Employee Benefits</u>				
210 Group Insurance – Contracted Provider				631.75
220 Social Security Contributions				18,449.11
230 PSERS Retirement Contributions				110,919.75
250 Unemployment Compensation				319.80
260 Workers' Compensation				1,681.57
270 Group Insurance – Self-Insurance				31,919.33
299 All Other Employee Benefits				1,994.45
Total Personnel Services – Employee Benefits				\$165,915.76
300 <u>Purchased Professional and Technical Services</u>				
329 Professional Educational Services – Other				839.00
Total Purchased Professional and Technical Services				\$839.00
500 <u>Other Purchased Services</u>				
530 Communications				839.80
580 Travel				454.75
Total Other Purchased Services				\$1,294.55
800 <u>Other Objects</u>				
810 Dues and Fees				1,039.99
Total Other Objects				\$1,039.99
Total 2511 Supervision of Fiscal Services - Head of Component				\$517,595.99

General Fund (10)

2513 Receiving and Disbursing Funds Services

Elementary

Secondary

Federal

Total

100 Personnel Services – Salaries

100 Personnel Services – Salaries

149,792.86

Total Personnel Services – Salaries

\$149,792.86

200 Personnel Services – Employee Benefits

210 Group Insurance – Contracted Provider

184.23

220 Social Security Contributions

10,320.28

230 PSERS Retirement Contributions

50,981.44

250 Unemployment Compensation

137.45

260 Workers' Compensation

722.76

270 Group Insurance – Self-Insurance

39,829.56

299 All Other Employee Benefits

857.24

Total Personnel Services – Employee Benefits

\$103,032.96

Total 2513 Receiving and Disbursing Funds Services

\$252,825.82

General Fund (10)

2514 Payroll Services

	<u>Elementary</u>	<u>Secondary</u>	<u>Federal</u>	<u>Total</u>
100 Personnel Services – Salaries				
100 Personnel Services – Salaries				119,063.13
Total Personnel Services – Salaries				\$119,063.13
200 Personnel Services – Employee Benefits				
210 Group Insurance – Contracted Provider				216.75
220 Social Security Contributions				8,119.06
230 PSERS Retirement Contributions				40,993.82
250 Unemployment Compensation				109.26
260 Workers' Compensation				574.49
270 Group Insurance – Self-Insurance				33,437.54
299 All Other Employee Benefits				681.38
Total Personnel Services – Employee Benefits				\$84,132.30
500 Other Purchased Services				
530 Communications				419.90
Total Other Purchased Services				\$419.90
Total 2514 Payroll Services				\$203,615.33

General Fund (10)

	<u>Elementary</u>	<u>Secondary</u>	<u>Federal</u>	<u>Total</u>
2515 Financial Accounting Services				
100 Personnel Services – Salaries				
100 Personnel Services – Salaries				407,380.81
Total Personnel Services – Salaries				\$407,380.81
200 Personnel Services – Employee Benefits				
210 Group Insurance – Contracted Provider				1,567.58
220 Social Security Contributions				29,718.55
230 PSERS Retirement Contributions				169,197.70
250 Unemployment Compensation				373.83
260 Workers' Compensation				1,965.65
270 Group Insurance – Self-Insurance				54,248.71
299 All Other Employee Benefits				2,331.37
Total Personnel Services – Employee Benefits				\$259,403.39
300 Purchased Professional and Technical Services				
329 Professional Educational Services – Other				2,807.00
330 Other Professional Services				8,300.00
Total Purchased Professional and Technical Services				\$11,107.00
400 Purchased Property Services				
430 Repairs and Maintenance Services				796.01
440 Rentals				881.69
Total Purchased Property Services				\$1,677.70
500 Other Purchased Services				
530 Communications				6,465.02
549 Other Advertising/Public Relations				1,185.48
580 Travel				151.84
Total Other Purchased Services				\$7,802.34
600 Supplies				
610 General Supplies				10,892.85
640 Books and Periodicals				862.49
Total Supplies				\$11,755.34
800 Other Objects				
810 Dues and Fees				28,992.75
Total Other Objects				\$28,992.75
Total 2515 Financial Accounting Services				\$728,119.33

General Fund (10)

2520 Purchasing Services

Elementary

Secondary

Federal

Total

100 Personnel Services – Salaries

100 Personnel Services – Salaries

70,304.34

Total Personnel Services – Salaries

\$70,304.34

200 Personnel Services – Employee Benefits

210 Group Insurance – Contracted Provider

150.89

220 Social Security Contributions

4,846.99

230 PSERS Retirement Contributions

24,141.95

250 Unemployment Compensation

64.51

260 Workers' Compensation

339.22

270 Group Insurance – Self-Insurance

18,776.71

299 All Other Employee Benefits

402.34

Total Personnel Services – Employee Benefits

\$48,722.61

Total 2520 Purchasing Services

\$119,026.95

General Fund (10)

	<u>Elementary</u>	<u>Secondary</u>	<u>Federal</u>	<u>Total</u>
2530 Warehousing and Distributing Services				
100 Personnel Services – Salaries				
100 Personnel Services – Salaries				38,798.36
Total Personnel Services – Salaries				\$38,798.36
200 Personnel Services – Employee Benefits				
210 Group Insurance – Contracted Provider				58.66
220 Social Security Contributions				2,741.14
230 PSERS Retirement Contributions				10,552.48
250 Unemployment Compensation				35.56
260 Workers' Compensation				186.98
270 Group Insurance – Self-Insurance				9,207.79
299 All Other Employee Benefits				221.77
Total Personnel Services – Employee Benefits				\$23,004.38
400 Purchased Property Services				
440 Rentals				3,445.37
Total Purchased Property Services				\$3,445.37
500 Other Purchased Services				
530 Communications				6,176.39
Total Other Purchased Services				\$6,176.39
600 Supplies				
610 General Supplies				10,903.91
Total Supplies				\$10,903.91
800 Other Objects				
810 Dues and Fees				50.00
Total Other Objects				\$50.00
Total 2530 Warehousing and Distributing Services				\$82,378.41

General Fund (10)

	<u>Elementary</u>	<u>Secondary</u>	<u>Federal</u>	<u>Total</u>
2600 Operation and Maintenance of Plant Services				
100 Personnel Services – Salaries				
100 Personnel Services – Salaries				7,592,113.55
Total Personnel Services – Salaries				\$7,592,113.55
200 Personnel Services – Employee Benefits				
210 Group Insurance – Contracted Provider				9,834.71
220 Social Security Contributions				560,852.70
230 PSERS Retirement Contributions				2,660,776.25
250 Unemployment Compensation				6,635.96
260 Workers' Compensation				34,893.32
270 Group Insurance – Self-Insurance				1,293,352.67
299 All Other Employee Benefits				41,385.50
Total Personnel Services – Employee Benefits				\$4,607,731.11
300 Purchased Professional and Technical Services				
329 Professional Educational Services – Other				5,596.05
330 Other Professional Services				2,563,882.90
350 Security / Safety Services				116,299.55
390 Other Purchased Professional and Technical Services			307,648.00	307,648.00
Total Purchased Professional and Technical Services			\$307,648.00	\$2,993,426.50
400 Purchased Property Services				
420 Utility Services				2,393,230.34
430 Repairs and Maintenance Services				712,453.84
440 Rentals				19,961.03
Total Purchased Property Services				\$3,125,645.21
500 Other Purchased Services				
521 Fire Insurance				203,227.00
522 Automotive Liability Insurance				54,794.00
523 General Property and Liability Insurance				138,682.00
529 Other Insurance				27,207.00
530 Communications				225,491.82
580 Travel				20,428.93
Total Other Purchased Services				\$669,830.75
600 Supplies				
610 General Supplies	560,192.42	504,278.19	38,931.08	1,103,401.69
620 Energy				893,953.56
630 Food				1,850.74
640 Books and Periodicals				475.70
650 Supplies & Fees – Technology Related				4,362.00
Total Supplies	\$560,192.42	\$504,278.19	\$38,931.08	\$2,004,043.69
700 Property				
752 Capital Equipment – Original and Additional				217,564.93
Total Property				\$217,564.93
800 Other Objects				

General Fund (10)

2600 Operation and Maintenance of Plant Services

Elementary

Secondary

Federal

Total

800 Other Objects

810 Dues and Fees

1,706.15

Total Other Objects

\$1,706.15

Total 2600 Operation and Maintenance of Plant Services

\$560,192.42

\$504,278.19

\$346,579.08

\$21,212,061.89

General Fund (10)

	<u>Elementary</u>	<u>Secondary</u>	<u>Federal</u>	<u>Total</u>
2610 Supervision of Operation and Maintenance of Plant Services				
100 <u>Personnel Services – Salaries</u>				
100 Personnel Services – Salaries				1,915,391.94
Total Personnel Services – Salaries				\$1,915,391.94
200 <u>Personnel Services – Employee Benefits</u>				
210 Group Insurance – Contracted Provider				3,274.73
220 Social Security Contributions				131,954.41
230 PSERS Retirement Contributions				650,841.60
250 Unemployment Compensation				1,757.57
260 Workers' Compensation				9,241.72
270 Group Insurance – Self-Insurance				362,969.23
299 All Other Employee Benefits				10,961.19
Total Personnel Services – Employee Benefits				\$1,171,000.45
300 <u>Purchased Professional and Technical Services</u>				
329 Professional Educational Services – Other				5,596.05
390 Other Purchased Professional and Technical Services			307,648.00	307,648.00
Total Purchased Professional and Technical Services			\$307,648.00	\$313,244.05
500 <u>Other Purchased Services</u>				
530 Communications				23,746.25
580 Travel				3,742.59
Total Other Purchased Services				\$27,488.84
600 <u>Supplies</u>				
640 Books and Periodicals				475.70
Total Supplies				\$475.70
Total 2610 Supervision of Operation and Maintenance of Plant Services			\$307,648.00	\$3,427,600.98

General Fund (10)

	<u>Elementary</u>	<u>Secondary</u>	<u>Federal</u>	<u>Total</u>
2611 Supervision of Operation and Maintenance of Plant Services – Head of Component				
100 Personnel Services – Salaries				
100 Personnel Services – Salaries				245,795.34
Total Personnel Services – Salaries				\$245,795.34
200 Personnel Services – Employee Benefits				
210 Group Insurance – Contracted Provider				235.49
220 Social Security Contributions				14,368.95
230 PSERS Retirement Contributions				75,331.01
250 Unemployment Compensation				225.51
260 Workers' Compensation				1,185.75
270 Group Insurance – Self-Insurance				26,637.56
299 All Other Employee Benefits				1,406.37
Total Personnel Services – Employee Benefits				\$119,390.64
500 Other Purchased Services				
580 Travel				1,056.32
Total Other Purchased Services				\$1,056.32
Total 2611 Supervision of Operation and Maintenance of Plant Services – Head of Component				\$366,242.30

General Fund (10)

2619 Supervision of Operation and Maintenance of Plant Services – All Other Supervision

Elementary Secondary Federal Total

100 Personnel Services – Salaries				
100 Personnel Services – Salaries				1,669,596.60
Total Personnel Services – Salaries				\$1,669,596.60
200 Personnel Services – Employee Benefits				
210 Group Insurance – Contracted Provider				3,039.24
220 Social Security Contributions				117,585.46
230 PSERS Retirement Contributions				575,510.59
250 Unemployment Compensation				1,532.06
260 Workers' Compensation				8,055.97
270 Group Insurance – Self-Insurance				336,331.67
299 All Other Employee Benefits				9,554.82
Total Personnel Services – Employee Benefits				\$1,051,609.81
300 Purchased Professional and Technical Services				
329 Professional Educational Services – Other				5,596.05
390 Other Purchased Professional and Technical Services			307,648.00	307,648.00
Total Purchased Professional and Technical Services			\$307,648.00	\$313,244.05
500 Other Purchased Services				
530 Communications				23,746.25
580 Travel				2,686.27
Total Other Purchased Services				\$26,432.52
600 Supplies				
640 Books and Periodicals				475.70
Total Supplies				\$475.70
Total 2619 Supervision of Operation and Maintenance of Plant Services – All Other Supervision			\$307,648.00	\$3,061,358.68

General Fund (10)

	<u>Elementary</u>	<u>Secondary</u>	<u>Federal</u>	<u>Total</u>
2620 Operation of Buildings Services				
100 Personnel Services – Salaries				
100 Personnel Services – Salaries				4,730,596.83
Total Personnel Services – Salaries				\$4,730,596.83
200 Personnel Services – Employee Benefits				
210 Group Insurance – Contracted Provider				5,332.43
220 Social Security Contributions				360,290.44
230 PSERS Retirement Contributions				1,682,386.78
250 Unemployment Compensation				4,069.67
260 Workers' Compensation				21,399.21
270 Group Insurance – Self-Insurance				780,029.29
299 All Other Employee Benefits				25,380.73
Total Personnel Services – Employee Benefits				\$2,878,888.55
300 Purchased Professional and Technical Services				
330 Other Professional Services				13,882.90
350 Security / Safety Services				495.00
Total Purchased Professional and Technical Services				\$14,377.90
400 Purchased Property Services				
420 Utility Services				2,393,230.34
430 Repairs and Maintenance Services				608,364.20
440 Rentals				18,731.83
Total Purchased Property Services				\$3,020,326.37
500 Other Purchased Services				
521 Fire Insurance				203,227.00
522 Automotive Liability Insurance				54,794.00
523 General Property and Liability Insurance				138,682.00
529 Other Insurance				27,207.00
530 Communications				201,745.57
580 Travel				16,686.34
Total Other Purchased Services				\$642,341.91
600 Supplies				
610 General Supplies	450,341.59	405,391.82	38,931.08	894,664.49
620 Energy				826,861.28
630 Food				1,850.74
650 Supplies & Fees – Technology Related				4,362.00
Total Supplies	\$450,341.59	\$405,391.82	\$38,931.08	\$1,727,738.51
700 Property				
752 Capital Equipment – Original and Additional				193,601.93
Total Property				\$193,601.93
800 Other Objects				
810 Dues and Fees				1,431.15
Total Other Objects				\$1,431.15
Total 2620 Operation of Buildings Services	\$450,341.59	\$405,391.82	\$38,931.08	\$13,209,303.15

General Fund (10)

	<u>Elementary</u>	<u>Secondary</u>	<u>Federal</u>	<u>Total</u>
2630 Care and Upkeep of Grounds Services				
100 Personnel Services – Salaries				
100 Personnel Services – Salaries				657,586.51
Total Personnel Services – Salaries				\$657,586.51
200 Personnel Services – Employee Benefits				
210 Group Insurance – Contracted Provider				747.53
220 Social Security Contributions				47,345.97
230 PSERS Retirement Contributions				227,232.94
250 Unemployment Compensation				553.64
260 Workers' Compensation				2,911.14
270 Group Insurance – Self-Insurance				113,120.65
299 All Other Employee Benefits				3,452.79
Total Personnel Services – Employee Benefits				\$395,364.66
400 Purchased Property Services				
430 Repairs and Maintenance Services				91,935.34
440 Rentals				1,229.20
Total Purchased Property Services				\$93,164.54
600 Supplies				
610 General Supplies	71,311.28	64,193.54		135,504.82
Total Supplies	\$71,311.28	\$64,193.54		\$135,504.82
700 Property				
752 Capital Equipment – Original and Additional				23,963.00
Total Property				\$23,963.00
800 Other Objects				
810 Dues and Fees				275.00
Total Other Objects				\$275.00
Total 2630 Care and Upkeep of Grounds Services	\$71,311.28	\$64,193.54		\$1,305,858.53

General Fund (10)

	<u>Elementary</u>	<u>Secondary</u>	<u>Federal</u>	<u>Total</u>
2650 Vehicle Operation and Maintenance Services (Other Than Student Transportation Vehicles)				
100 Personnel Services – Salaries				
100 Personnel Services – Salaries				75,205.55
Total Personnel Services – Salaries				\$75,205.55
200 Personnel Services – Employee Benefits				
210 Group Insurance – Contracted Provider				60.04
220 Social Security Contributions				5,151.43
230 PSERS Retirement Contributions				25,952.47
250 Unemployment Compensation				67.89
260 Workers' Compensation				356.96
270 Group Insurance – Self-Insurance				17,844.99
299 All Other Employee Benefits				423.37
Total Personnel Services – Employee Benefits				\$49,857.15
400 Purchased Property Services				
430 Repairs and Maintenance Services				12,154.30
Total Purchased Property Services				\$12,154.30
600 Supplies				
610 General Supplies	38,539.55	34,692.83		73,232.38
620 Energy				67,092.28
Total Supplies	\$38,539.55	\$34,692.83		\$140,324.66
Total 2650 Vehicle Operation and Maintenance Services (Other Than Student Transportation Vehicles)	\$38,539.55	\$34,692.83		\$277,541.66

General Fund (10)

	<u>Elementary</u>	<u>Secondary</u>	<u>Federal</u>	<u>Total</u>
2660 Safety and Security Services				
100 Personnel Services – Salaries				
100 Personnel Services – Salaries				213,332.72
Total Personnel Services – Salaries				\$213,332.72
200 Personnel Services – Employee Benefits				
210 Group Insurance – Contracted Provider				419.98
220 Social Security Contributions				16,110.45
230 PSERS Retirement Contributions				74,362.46
250 Unemployment Compensation				187.19
260 Workers' Compensation				984.29
270 Group Insurance – Self-Insurance				19,388.51
299 All Other Employee Benefits				1,167.42
Total Personnel Services – Employee Benefits				\$112,620.30
300 Purchased Professional and Technical Services				
350 Security / Safety Services				115,804.55
Total Purchased Professional and Technical Services				\$115,804.55
Total 2660 Safety and Security Services				\$441,757.57

General Fund (10)

	<u>Elementary</u>	<u>Secondary</u>	<u>Federal</u>	<u>Total</u>
2690 Other Operation and Maintenance of Plant Services				
300 <u>Purchased Professional and Technical Services</u>				
330 Other Professional Services				2,550,000.00
Total Purchased Professional and Technical Services				\$2,550,000.00
Total 2690 Other Operation and Maintenance of Plant Services				\$2,550,000.00

General Fund (10)

	<u>Elementary</u>	<u>Secondary</u>	<u>Federal</u>	<u>Total</u>
2700 Student Transportation Services				
100 Personnel Services – Salaries				
100 Personnel Services – Salaries				209,411.30
Total Personnel Services – Salaries				\$209,411.30
200 Personnel Services – Employee Benefits				
210 Group Insurance – Contracted Provider				396.60
220 Social Security Contributions				15,105.06
230 PSERS Retirement Contributions				74,258.07
250 Unemployment Compensation				191.65
260 Workers' Compensation				1,007.75
270 Group Insurance – Self-Insurance				40,008.03
299 All Other Employee Benefits				1,195.25
Total Personnel Services – Employee Benefits				\$132,162.41
300 Purchased Professional and Technical Services				
329 Professional Educational Services – Other				4,708.00
Total Purchased Professional and Technical Services				\$4,708.00
400 Purchased Property Services				
430 Repairs and Maintenance Services				1,263.47
440 Rentals				23.75
Total Purchased Property Services				\$1,287.22
500 Other Purchased Services				
513 Contracted Carriers			10,000.00	11,908,601.08
516 Student Transportation Services From the IU				1,985.50
530 Communications				1,230.88
550 Printing and Binding				2,117.13
580 Travel				1,670.18
Total Other Purchased Services			\$10,000.00	\$11,915,604.77
600 Supplies				
610 General Supplies				1,430.12
630 Food				1,610.00
640 Books and Periodicals				414.00
650 Supplies & Fees – Technology Related				35,663.00
Total Supplies				\$39,117.12
800 Other Objects				
810 Dues and Fees				80.00
Total Other Objects				\$80.00
Total 2700 Student Transportation Services			\$10,000.00	\$12,302,370.82

General Fund (10)

2710 Supervision of Student Transportation Services

Elementary Secondary Federal Total

100	<u>Personnel Services – Salaries</u>				
	100 Personnel Services – Salaries				98,781.63
Total Personnel Services – Salaries					\$98,781.63
200	<u>Personnel Services – Employee Benefits</u>				
	210 Group Insurance – Contracted Provider				189.40
	220 Social Security Contributions				7,131.90
	230 PSERS Retirement Contributions				34,841.27
	250 Unemployment Compensation				90.44
	260 Workers' Compensation				475.56
	270 Group Insurance – Self-Insurance				19,062.67
	299 All Other Employee Benefits				564.04
Total Personnel Services – Employee Benefits					\$62,355.28
300	<u>Purchased Professional and Technical Services</u>				
	329 Professional Educational Services – Other				4,708.00
Total Purchased Professional and Technical Services					\$4,708.00
400	<u>Purchased Property Services</u>				
	430 Repairs and Maintenance Services				1,263.47
	440 Rentals				23.75
Total Purchased Property Services					\$1,287.22
500	<u>Other Purchased Services</u>				
	530 Communications				1,230.88
	550 Printing and Binding				2,117.13
	580 Travel				1,670.18
Total Other Purchased Services					\$5,018.19
600	<u>Supplies</u>				
	610 General Supplies				1,430.12
	630 Food				1,610.00
	640 Books and Periodicals				414.00
	650 Supplies & Fees – Technology Related				35,663.00
Total Supplies					\$39,117.12
800	<u>Other Objects</u>				
	810 Dues and Fees				80.00
Total Other Objects					\$80.00
Total 2710 Supervision of Student Transportation Services					\$211,347.44

General Fund (10)

2719 Supervision of Student Transportation Services – All Other Supervision

Elementary

Secondary

Federal

Total

100 Personnel Services – Salaries

100 Personnel Services – Salaries 98,781.63

Total Personnel Services – Salaries \$98,781.63

200 Personnel Services – Employee Benefits

210 Group Insurance – Contracted Provider 189.40

220 Social Security Contributions 7,131.90

230 PSERS Retirement Contributions 34,841.27

250 Unemployment Compensation 90.44

260 Workers' Compensation 475.56

270 Group Insurance – Self-Insurance 19,062.67

299 All Other Employee Benefits 564.04

Total Personnel Services – Employee Benefits \$62,355.28

300 Purchased Professional and Technical Services

329 Professional Educational Services – Other 4,708.00

Total Purchased Professional and Technical Services \$4,708.00

400 Purchased Property Services

430 Repairs and Maintenance Services 1,263.47

440 Rentals 23.75

Total Purchased Property Services \$1,287.22

500 Other Purchased Services

530 Communications 1,230.88

550 Printing and Binding 2,117.13

580 Travel 1,670.18

Total Other Purchased Services \$5,018.19

600 Supplies

610 General Supplies 1,430.12

630 Food 1,610.00

640 Books and Periodicals 414.00

650 Supplies & Fees – Technology Related 35,663.00

Total Supplies \$39,117.12

800 Other Objects

810 Dues and Fees 80.00

Total Other Objects \$80.00

Total 2719 Supervision of Student Transportation Services – All Other Supervision \$211,347.44

LEA : 124159002 West Chester Area SD

Printed 1/31/2023 11:11:23 AM

General Fund (10)

2720 Vehicle Operation Services

Elementary

Secondary

Federal

Total

500 Other Purchased Services

513 Contracted Carriers

10,000.00

7,262,763.67

516 Student Transportation Services From the IU

1,985.50

Total Other Purchased Services

\$10,000.00

\$7,264,749.17

Total 2720 Vehicle Operation Services

\$10,000.00

\$7,264,749.17

General Fund (10)

2750 Nonpublic Transportation

Elementary

Secondary

Federal

Total

100 Personnel Services – Salaries

100 Personnel Services – Salaries

110,629.67

Total Personnel Services – Salaries

\$110,629.67

200 Personnel Services – Employee Benefits

210 Group Insurance – Contracted Provider

207.20

220 Social Security Contributions

7,973.16

230 PSERS Retirement Contributions

39,416.80

250 Unemployment Compensation

101.21

260 Workers' Compensation

532.19

270 Group Insurance – Self-Insurance

20,945.36

299 All Other Employee Benefits

631.21

Total Personnel Services – Employee Benefits

\$69,807.13

500 Other Purchased Services

513 Contracted Carriers

4,645,837.41

Total Other Purchased Services

\$4,645,837.41

Total 2750 Nonpublic Transportation

\$4,826,274.21

General Fund (10)

	<u>Elementary</u>	<u>Secondary</u>	<u>Federal</u>	<u>Total</u>
2800 Support Services – Central				
100 Personnel Services – Salaries				
100 Personnel Services – Salaries			12,815.19	2,003,173.13
Total Personnel Services – Salaries			\$12,815.19	\$2,003,173.13
200 Personnel Services – Employee Benefits				
210 Group Insurance – Contracted Provider			4.97	2,363.12
220 Social Security Contributions			755.37	137,311.49
230 PSERS Retirement Contributions			4,426.22	673,363.07
250 Unemployment Compensation				1,775.03
260 Workers' Compensation				9,333.47
270 Group Insurance – Self-Insurance			984.40	291,100.81
299 All Other Employee Benefits				11,070.05
Total Personnel Services – Employee Benefits			\$6,170.96	\$1,126,317.04
300 Purchased Professional and Technical Services				
329 Professional Educational Services – Other				83,462.86
330 Other Professional Services				31,899.80
340 Technical Services				28,349.75
Total Purchased Professional and Technical Services				\$143,712.41
400 Purchased Property Services				
430 Repairs and Maintenance Services				53,097.44
440 Rentals				291.01
Total Purchased Property Services				\$53,388.45
500 Other Purchased Services				
530 Communications				13,945.31
580 Travel				8,576.77
Total Other Purchased Services				\$22,522.08
600 Supplies				
610 General Supplies				13,000.40
630 Food				1,429.00
650 Supplies & Fees – Technology Related			8,995.00	641,486.81
Total Supplies			\$8,995.00	\$655,916.21
800 Other Objects				
810 Dues and Fees				40,718.00
Total Other Objects				\$40,718.00
Total 2800 Support Services – Central			\$27,981.15	\$4,045,747.32

General Fund (10)

2810 Planning, Research, Development and Evaluation Services	<u>Elementary</u>	<u>Secondary</u>	<u>Federal</u>	<u>Total</u>
100 Personnel Services – Salaries				
100 Personnel Services – Salaries				6,019.16
Total Personnel Services – Salaries				\$6,019.16
200 Personnel Services – Employee Benefits				
220 Social Security Contributions				437.66
230 PSERS Retirement Contributions				2,097.76
Total Personnel Services – Employee Benefits				\$2,535.42
500 Other Purchased Services				
530 Communications				3,286.44
Total Other Purchased Services				\$3,286.44
Total 2810 Planning, Research, Development and Evaluation Services				\$11,841.02

General Fund (10)

	<u>Elementary</u>	<u>Secondary</u>	<u>Federal</u>	<u>Total</u>
2820 Information Services				
100 Personnel Services – Salaries				
100 Personnel Services – Salaries				962,547.32
Total Personnel Services – Salaries				\$962,547.32
200 Personnel Services – Employee Benefits				
210 Group Insurance – Contracted Provider				1,124.96
220 Social Security Contributions				65,512.95
230 PSERS Retirement Contributions				327,421.01
250 Unemployment Compensation				852.07
260 Workers' Compensation				4,480.38
270 Group Insurance – Self-Insurance				178,780.87
299 All Other Employee Benefits				5,313.99
Total Personnel Services – Employee Benefits				\$583,486.23
300 Purchased Professional and Technical Services				
329 Professional Educational Services – Other				230.00
340 Technical Services				28,349.75
Total Purchased Professional and Technical Services				\$28,579.75
400 Purchased Property Services				
430 Repairs and Maintenance Services				52,762.16
Total Purchased Property Services				\$52,762.16
500 Other Purchased Services				
530 Communications				8,317.66
580 Travel				1,922.93
Total Other Purchased Services				\$10,240.59
600 Supplies				
610 General Supplies				117.59
630 Food				694.00
650 Supplies & Fees – Technology Related			8,995.00	640,986.81
Total Supplies			\$8,995.00	\$641,798.40
Total 2820 Information Services			\$8,995.00	\$2,279,414.45

General Fund (10)

2821 Supervision of Information Services

Elementary

Secondary

Federal

Total

100 Personnel Services – Salaries

100 Personnel Services – Salaries

248,695.37

Total Personnel Services – Salaries

\$248,695.37

200 Personnel Services – Employee Benefits

210 Group Insurance – Contracted Provider

418.68

220 Social Security Contributions

15,148.47

230 PSERS Retirement Contributions

84,414.98

250 Unemployment Compensation

227.21

260 Workers' Compensation

1,194.72

270 Group Insurance – Self-Insurance

37,214.16

299 All Other Employee Benefits

1,417.01

Total Personnel Services – Employee Benefits

\$140,035.23

Total 2821 Supervision of Information Services

\$388,730.60

General Fund (10)

	<u>Elementary</u>	<u>Secondary</u>	<u>Federal</u>	<u>Total</u>
2829 Other Information Services				
100 Personnel Services – Salaries				
100 Personnel Services – Salaries				713,851.95
Total Personnel Services – Salaries				\$713,851.95
200 Personnel Services – Employee Benefits				
210 Group Insurance – Contracted Provider				706.28
220 Social Security Contributions				50,364.48
230 PSERS Retirement Contributions				243,006.03
250 Unemployment Compensation				624.86
260 Workers' Compensation				3,285.66
270 Group Insurance – Self-Insurance				141,566.71
299 All Other Employee Benefits				3,896.98
Total Personnel Services – Employee Benefits				\$443,451.00
300 Purchased Professional and Technical Services				
329 Professional Educational Services – Other				230.00
340 Technical Services				28,349.75
Total Purchased Professional and Technical Services				\$28,579.75
400 Purchased Property Services				
430 Repairs and Maintenance Services				52,762.16
Total Purchased Property Services				\$52,762.16
500 Other Purchased Services				
530 Communications				8,317.66
580 Travel				1,922.93
Total Other Purchased Services				\$10,240.59
600 Supplies				
610 General Supplies				117.59
630 Food				694.00
650 Supplies & Fees – Technology Related			8,995.00	640,986.81
Total Supplies			\$8,995.00	\$641,798.40
Total 2829 Other Information Services			\$8,995.00	\$1,890,683.85

General Fund (10)

2830 Staff Services

	<u>Elementary</u>	<u>Secondary</u>	<u>Federal</u>	<u>Total</u>
100 Personnel Services – Salaries				
100 Personnel Services – Salaries				644,447.53
Total Personnel Services – Salaries				\$644,447.53
200 Personnel Services – Employee Benefits				
210 Group Insurance – Contracted Provider				856.26
220 Social Security Contributions				43,608.43
230 PSERS Retirement Contributions				209,804.05
250 Unemployment Compensation				587.25
260 Workers' Compensation				3,087.88
270 Group Insurance – Self-Insurance				57,561.29
299 All Other Employee Benefits				3,662.41
Total Personnel Services – Employee Benefits				\$319,167.57
300 Purchased Professional and Technical Services				
329 Professional Educational Services – Other				83,232.86
330 Other Professional Services				31,899.80
Total Purchased Professional and Technical Services				\$115,132.66
400 Purchased Property Services				
430 Repairs and Maintenance Services				335.28
Total Purchased Property Services				\$335.28
500 Other Purchased Services				
530 Communications				2,341.21
580 Travel				6,653.84
Total Other Purchased Services				\$8,995.05
600 Supplies				
610 General Supplies				12,882.81
630 Food				735.00
650 Supplies & Fees – Technology Related				500.00
Total Supplies				\$14,117.81
800 Other Objects				
810 Dues and Fees				40,718.00
Total Other Objects				\$40,718.00
Total 2830 Staff Services				\$1,142,913.90

General Fund (10)

	<u>Elementary</u>	<u>Secondary</u>	<u>Federal</u>	<u>Total</u>
2831 Supervision of Staff Services				
100 Personnel Services – Salaries				
100 Personnel Services – Salaries				207,939.02
Total Personnel Services – Salaries				\$207,939.02
200 Personnel Services – Employee Benefits				
210 Group Insurance – Contracted Provider				206.77
220 Social Security Contributions				12,059.81
230 PSERS Retirement Contributions				69,794.36
250 Unemployment Compensation				190.81
260 Workers' Compensation				1,003.32
270 Group Insurance – Self-Insurance				15,959.67
299 All Other Employee Benefits				1,190.00
Total Personnel Services – Employee Benefits				\$100,404.74
500 Other Purchased Services				
530 Communications				1,500.20
580 Travel				6,653.84
Total Other Purchased Services				\$8,154.04
800 Other Objects				
810 Dues and Fees				999.00
Total Other Objects				\$999.00
Total 2831 Supervision of Staff Services				\$317,496.80

General Fund (10)

2832 Recruitment and Placement Services

Elementary

Secondary

Federal

Total

100 Personnel Services – Salaries

100 Personnel Services – Salaries

173,903.28

Total Personnel Services – Salaries

\$173,903.28

200 Personnel Services – Employee Benefits

210 Group Insurance – Contracted Provider

155.43

220 Social Security Contributions

12,446.41

230 PSERS Retirement Contributions

50,915.48

250 Unemployment Compensation

159.58

260 Workers' Compensation

839.10

299 All Other Employee Benefits

995.22

Total Personnel Services – Employee Benefits

\$65,511.22

800 Other Objects

810 Dues and Fees

(400.00)

Total Other Objects

(\$400.00)

Total 2832 Recruitment and Placement Services

\$239,014.50

General Fund (10)

2835 Health Services

Elementary

Secondary

Federal

Total

100 Personnel Services – Salaries

100 Personnel Services – Salaries

69,882.62

Total Personnel Services – Salaries

\$69,882.62

200 Personnel Services – Employee Benefits

210 Group Insurance – Contracted Provider

154.75

220 Social Security Contributions

5,001.60

230 PSERS Retirement Contributions

23,909.02

250 Unemployment Compensation

64.13

260 Workers' Compensation

337.19

270 Group Insurance – Self-Insurance

14,632.86

299 All Other Employee Benefits

399.93

Total Personnel Services – Employee Benefits

\$44,499.48

300 Purchased Professional and Technical Services

330 Other Professional Services

31,899.80

Total Purchased Professional and Technical Services

\$31,899.80

Total 2835 Health Services

\$146,281.90

General Fund (10)

2839 Other Staff Services

Elementary Secondary Federal Total

100	<u>Personnel Services – Salaries</u>			
	100 Personnel Services – Salaries			192,722.61
Total Personnel Services – Salaries				\$192,722.61
200	<u>Personnel Services – Employee Benefits</u>			
	210 Group Insurance – Contracted Provider			339.31
	220 Social Security Contributions			14,100.61
	230 PSERS Retirement Contributions			65,185.19
	250 Unemployment Compensation			172.73
	260 Workers' Compensation			908.27
	270 Group Insurance – Self-Insurance			26,968.76
	299 All Other Employee Benefits			1,077.26
Total Personnel Services – Employee Benefits				\$108,752.13
300	<u>Purchased Professional and Technical Services</u>			
	329 Professional Educational Services – Other			83,232.86
Total Purchased Professional and Technical Services				\$83,232.86
400	<u>Purchased Property Services</u>			
	430 Repairs and Maintenance Services			335.28
Total Purchased Property Services				\$335.28
500	<u>Other Purchased Services</u>			
	530 Communications			841.01
Total Other Purchased Services				\$841.01
600	<u>Supplies</u>			
	610 General Supplies			12,882.81
	630 Food			735.00
	650 Supplies & Fees – Technology Related			500.00
Total Supplies				\$14,117.81
800	<u>Other Objects</u>			
	810 Dues and Fees			40,119.00
Total Other Objects				\$40,119.00
Total 2839 Other Staff Services				\$440,120.70

General Fund (10)

2840 Data Processing Services

100 Personnel Services – Salaries

	<u>Elementary</u>	<u>Secondary</u>	<u>Federal</u>	<u>Total</u>
100 Personnel Services – Salaries				377,343.93
Total Personnel Services – Salaries				\$377,343.93
200 Personnel Services – Employee Benefits				
210 Group Insurance – Contracted Provider				376.93
220 Social Security Contributions				26,997.08
230 PSERS Retirement Contributions				129,614.03
250 Unemployment Compensation				335.71
260 Workers' Compensation				1,765.21
270 Group Insurance – Self-Insurance				53,774.25
299 All Other Employee Benefits				2,093.65
Total Personnel Services – Employee Benefits				\$214,956.86
400 Purchased Property Services				
440 Rentals				291.01
Total Purchased Property Services				\$291.01
Total 2840 Data Processing Services				\$592,591.80

General Fund (10)

2850 State and Federal Agency Liaison Services

Elementary

Secondary

Federal

Total

100 Personnel Services – Salaries

100 Personnel Services – Salaries

12,815.19

12,815.19

Total Personnel Services – Salaries

\$12,815.19

\$12,815.19

200 Personnel Services – Employee Benefits

210 Group Insurance – Contracted Provider

4.97

4.97

220 Social Security Contributions

755.37

755.37

230 PSERS Retirement Contributions

4,426.22

4,426.22

270 Group Insurance – Self-Insurance

984.40

984.40

Total Personnel Services – Employee Benefits

\$6,170.96

\$6,170.96

Total 2850 State and Federal Agency Liaison Services

\$18,986.15

\$18,986.15

General Fund (10)

	<u>Elementary</u>	<u>Secondary</u>	<u>Federal</u>	<u>Total</u>
2900 Other Support Services				
500 Other Purchased Services				
595 IU Payments By Withholding				130,316.18
Total Other Purchased Services				\$130,316.18
800 Other Objects				
899 Pass-Through Funds				594,722.04
Total Other Objects				\$594,722.04
Total 2900 Other Support Services				\$725,038.22

General Fund (10)

2910 Support Services Not Listed Elsewhere In the 2000 Series

Elementary

Secondary

Federal

Total

500 Other Purchased Services

595 IU Payments By Withholding

130,316.18

Total Other Purchased Services

\$130,316.18

Total 2910 Support Services Not Listed Elsewhere In the 2000 Series

\$130,316.18

General Fund (10)

2990 Pass-Through Funds

Elementary

Secondary

Federal

Total

800 Other Objects

899 Pass-Through Funds

594,722.04

Total Other Objects

\$594,722.04

Total 2990 Pass-Through Funds

\$594,722.04

General Fund (10)

3000 Operation of Non-Instructional Services

Total

100 Personnel Services – Salaries

100 Personnel Services – Salaries 3,049,114.26

Total Personnel Services – Salaries \$3,049,114.26

200 Personnel Services – Employee Benefits

210 Group Insurance – Contracted Provider 1,368.07

220 Social Security Contributions 227,346.97

230 PSERS Retirement Contributions 837,569.39

250 Unemployment Compensation 677.86

260 Workers' Compensation 3,564.31

270 Group Insurance – Self-Insurance 116,977.52

299 All Other Employee Benefits 4,227.49

Total Personnel Services – Employee Benefits \$1,191,731.61

300 Purchased Professional and Technical Services

329 Professional Educational Services – Other 235.81

330 Other Professional Services 95,562.08

350 Security / Safety Services 171,227.07

390 Other Purchased Professional and Technical Services 133,172.18

Total Purchased Professional and Technical Services \$400,197.14

400 Purchased Property Services

430 Repairs and Maintenance Services 33,503.53

440 Rentals 110,182.71

Total Purchased Property Services \$143,686.24

500 Other Purchased Services

510 Student Transportation Services 213,879.50

520 Insurance – General 50,757.00

530 Communications 1,681.89

580 Travel 51,318.96

Total Other Purchased Services \$317,637.35

600 Supplies

610 General Supplies 305,036.38

630 Food 34.89

640 Books and Periodicals 2,202.00

Total Supplies \$307,273.27

800 Other Objects

810 Dues and Fees 83,644.47

Total Other Objects \$83,644.47

Total 3000 Operation of Non-Instructional Services \$5,493,284.34

General Fund (10)

3200 Student Activities

	<u>Elementary</u>	<u>Secondary</u>	<u>Federal</u>	<u>Total</u>
100 Personnel Services – Salaries				
100 Personnel Services – Salaries				3,048,474.32
Total Personnel Services – Salaries				\$3,048,474.32
200 Personnel Services – Employee Benefits				
210 Group Insurance – Contracted Provider				1,368.07
220 Social Security Contributions				227,301.48
230 PSERS Retirement Contributions				837,345.79
250 Unemployment Compensation				677.86
260 Workers' Compensation				3,564.31
270 Group Insurance – Self-Insurance				116,977.52
299 All Other Employee Benefits				4,227.49
Total Personnel Services – Employee Benefits				\$1,191,462.52
300 Purchased Professional and Technical Services				
329 Professional Educational Services – Other				235.81
330 Other Professional Services				95,562.08
350 Security / Safety Services				14,733.87
390 Other Purchased Professional and Technical Services				133,172.18
Total Purchased Professional and Technical Services				\$243,703.94
400 Purchased Property Services				
430 Repairs and Maintenance Services				33,503.53
440 Rentals				110,182.71
Total Purchased Property Services				\$143,686.24
500 Other Purchased Services				
510 Student Transportation Services				213,879.50
520 Insurance – General				50,757.00
530 Communications				1,681.89
580 Travel				51,318.96
Total Other Purchased Services				\$317,637.35
600 Supplies				
610 General Supplies				302,061.57
Total Supplies				\$302,061.57
800 Other Objects				
810 Dues and Fees				83,644.47
Total Other Objects				\$83,644.47
Total 3200 Student Activities				\$5,330,670.41

General Fund (10)

	<u>Elementary</u>	<u>Secondary</u>	<u>Federal</u>	<u>Total</u>
3300 Community Services				
100 Personnel Services – Salaries				
100 Personnel Services – Salaries			639.94	639.94
Total Personnel Services – Salaries			\$639.94	\$639.94
200 Personnel Services – Employee Benefits				
220 Social Security Contributions			45.49	45.49
230 PSERS Retirement Contributions			223.60	223.60
Total Personnel Services – Employee Benefits			\$269.09	\$269.09
300 Purchased Professional and Technical Services				
350 Security / Safety Services				156,493.20
Total Purchased Professional and Technical Services				\$156,493.20
600 Supplies				
610 General Supplies			2,974.81	2,974.81
630 Food			34.89	34.89
640 Books and Periodicals			2,202.00	2,202.00
Total Supplies			\$5,211.70	\$5,211.70
Total 3300 Community Services			\$6,120.73	\$162,613.93

General Fund (10)

5000 Other Expenditures and Financing Uses

Total

800 Other Objects

830 Interest 9,827,214.79

Total Other Objects \$9,827,214.79

900 Other Uses of Funds

910 Redemption of Principal 17,830,100.19

932 Capital Reserve Fund Transfers Applicable To Fund 32 6,730,104.07

Total Other Uses of Funds \$24,560,204.26

Total 5000 Other Expenditures and Financing Uses \$34,387,419.05

General Fund (10)

	<u>Elementary</u>	<u>Secondary</u>	<u>Federal</u>	<u>Total</u>
5100 Debt Service / Other Expenditures and Financing Uses				
800 Other Objects				
830 Interest				9,827,214.79
Total Other Objects				\$9,827,214.79
900 Other Uses of Funds				
910 Redemption of Principal			606.53	17,830,100.19
Total Other Uses of Funds			\$606.53	\$17,830,100.19
Total 5100 Debt Service / Other Expenditures and Financing Uses			\$606.53	\$27,657,314.98

General Fund (10)

	<u>Elementary</u>	<u>Secondary</u>	<u>Federal</u>	<u>Total</u>
5110 Debt Service				
800 Other Objects				
830 Interest				9,827,214.79
Total Other Objects				\$9,827,214.79
900 Other Uses of Funds				
910 Redemption of Principal				17,710,000.00
Total Other Uses of Funds				\$17,710,000.00
Total 5110 Debt Service				\$27,537,214.79

LEA : 124159002 West Chester Area SD

Printed 1/31/2023 11:11:40 AM

General Fund (10)

	<u>Elementary</u>	<u>Secondary</u>	<u>Federal</u>	<u>Total</u>
5140 Leases				
900 <u>Other Uses of Funds</u>				
910 Redemption of Principal			606.53	120,100.19
Total Other Uses of Funds			\$606.53	\$120,100.19
Total 5140 Leases			\$606.53	\$120,100.19

LEA : 124159002 West Chester Area SD

Printed 1/31/2023 11:11:40 AM

General Fund (10)

5200 Interfund Transfers – Out

Elementary

Secondary

Federal

Total

900 Other Uses of Funds

932 Capital Reserve Fund Transfers Applicable To Fund 32

6,730,104.07

Total Other Uses of Funds

\$6,730,104.07

Total 5200 Interfund Transfers – Out

\$6,730,104.07

LEA : 124159002 West Chester Area SD

Printed 1/31/2023 11:11:40 AM

General Fund (10)

5230 Capital Projects Fund Transfers

Elementary

Secondary

Federal

Total

900 Other Uses of Funds

932 Capital Reserve Fund Transfers Applicable To Fund 32

6,730,104.07

Total Other Uses of Funds

\$6,730,104.07

Total 5230 Capital Projects Fund Transfers

\$6,730,104.07

Capital Reserve Fund - § 1431 (32)

2000 Support Services

Total

300 Purchased Professional and Technical Services

330 Other Professional Services 5,038.68

Total Purchased Professional and Technical Services \$5,038.68

500 Other Purchased Services

520 Insurance – General (76,024.25)

Total Other Purchased Services (\$76,024.25)

600 Supplies

610 General Supplies 3,970,293.70

650 Supplies & Fees – Technology Related (28,380.54)

Total Supplies \$3,941,913.16

700 Property

762 Capitalized Equipment - Replacement 165,328.19

Total Property \$165,328.19

800 Other Objects

810 Dues and Fees 3,298.70

Total Other Objects \$3,298.70

Total 2000 Support Services \$4,039,554.48

LEA : 124159002 West Chester Area SD

Printed 1/31/2023 11:11:27 AM

Capital Reserve Fund - § 1431 (32)

2200 Support Services – Instructional Staff

	<u>Elementary</u>	<u>Secondary</u>	<u>Federal</u>	<u>Total</u>
600 <u>Supplies</u>				
610 General Supplies	1,514,412.82	2,155,934.37		3,670,347.19
Total Supplies	\$1,514,412.82	\$2,155,934.37		\$3,670,347.19
Total 2200 Support Services – Instructional Staff	\$1,514,412.82	\$2,155,934.37		\$3,670,347.19

LEA : 124159002 West Chester Area SD

Printed 1/31/2023 11:11:27 AM

Capital Reserve Fund - § 1431 (32)

2220 Technology Support Services

600 Supplies

610 General Supplies

Total Supplies

Total 2220 Technology Support Services

Elementary

Secondary

Federal

Total

1,514,412.82

2,155,934.37

3,670,347.19

\$1,514,412.82

\$2,155,934.37

\$3,670,347.19

\$1,514,412.82

\$2,155,934.37

\$3,670,347.19

LEA : 124159002 West Chester Area SD

Printed 1/31/2023 11:11:27 AM

Capital Reserve Fund - § 1431 (32)

2300 Support Services – Administration

Elementary

Secondary

Federal

Total

300 Purchased Professional and Technical Services

330 Other Professional Services

5,038.68

Total Purchased Professional and Technical Services

\$5,038.68

600 Supplies

610 General Supplies

260,015.96

Total Supplies

\$260,015.96

Total 2300 Support Services – Administration

\$265,054.64

LEA : 124159002 West Chester Area SD

Printed 1/31/2023 11:11:27 AM

Capital Reserve Fund - § 1431 (32)

2350 Legal and Accounting Services

Elementary

Secondary

Federal

Total

300 Purchased Professional and Technical Services

330 Other Professional Services

5,038.68

Total Purchased Professional and Technical Services

\$5,038.68

Total 2350 Legal and Accounting Services

\$5,038.68

LEA : 124159002 West Chester Area SD

Printed 1/31/2023 11:11:27 AM

Capital Reserve Fund - § 1431 (32)

2390 Other Administration Services

600 Supplies

610 General Supplies

Elementary

Secondary

Federal

Total

Total Supplies				260,015.96
Total 2390 Other Administration Services				\$260,015.96

LEA : 124159002 West Chester Area SD

Printed 1/31/2023 11:11:27 AM

Capital Reserve Fund - § 1431 (32)

2500 Support Services – Business

Elementary

Secondary

Federal

Total

600 Supplies

610 General Supplies

39,930.55

Total Supplies

\$39,930.55

Total 2500 Support Services – Business

\$39,930.55

LEA : 124159002 West Chester Area SD

Printed 1/31/2023 11:11:27 AM

Capital Reserve Fund - § 1431 (32)

2590 Other Support Services – Business

Elementary

Secondary

Federal

Total

600 Supplies

610 General Supplies

39,930.55

Total Supplies

\$39,930.55

Total 2590 Other Support Services – Business

\$39,930.55

LEA : 124159002 West Chester Area SD

Printed 1/31/2023 11:11:27 AM

Capital Reserve Fund - § 1431 (32)

2800 Support Services – Central

Elementary

Secondary

Federal

Total

500 Other Purchased Services

520 Insurance – General

(76,024.25)

Total Other Purchased Services

(\$76,024.25)

600 Supplies

650 Supplies & Fees – Technology Related

(28,380.54)

Total Supplies

(\$28,380.54)

700 Property

762 Capitalized Equipment - Replacement

165,328.19

Total Property

\$165,328.19

800 Other Objects

810 Dues and Fees

3,298.70

Total Other Objects

\$3,298.70

Total 2800 Support Services – Central

\$64,222.10

LEA : 124159002 West Chester Area SD

Printed 1/31/2023 11:11:27 AM

Capital Reserve Fund - § 1431 (32)

	<u>Elementary</u>	<u>Secondary</u>	<u>Federal</u>	<u>Total</u>
2820 Information Services				
500 Other Purchased Services				
520 Insurance – General				(76,024.25)
Total Other Purchased Services				(\$76,024.25)
600 Supplies				
650 Supplies & Fees – Technology Related				(28,380.54)
Total Supplies				(\$28,380.54)
700 Property				
762 Capitalized Equipment - Replacement				165,328.19
Total Property				\$165,328.19
800 Other Objects				
810 Dues and Fees				3,298.70
Total Other Objects				\$3,298.70
Total 2820 Information Services				\$64,222.10

LEA : 124159002 West Chester Area SD

Printed 1/31/2023 11:11:27 AM

Capital Reserve Fund - § 1431 (32)

2829 Other Information Services

Elementary

Secondary

Federal

Total

500 Other Purchased Services

520 Insurance – General

(76,024.25)

Total Other Purchased Services

(\$76,024.25)

600 Supplies

650 Supplies & Fees – Technology Related

(28,380.54)

Total Supplies

(\$28,380.54)

700 Property

762 Capitalized Equipment - Replacement

165,328.19

Total Property

\$165,328.19

800 Other Objects

810 Dues and Fees

3,298.70

Total Other Objects

\$3,298.70

Total 2829 Other Information Services

\$64,222.10

Capital Reserve Fund - § 1431 (32)

4000 Facilities Acquisition, Construction and Improvement Services

Total

300 Purchased Professional and Technical Services

330 Other Professional Services	71,655.24
390 Other Purchased Professional and Technical Services	2,600,153.49

Total Purchased Professional and Technical Services	\$2,671,808.73
--	-----------------------

400 Purchased Property Services

430 Repairs and Maintenance Services	3,000.00
--------------------------------------	----------

Total Purchased Property Services	\$3,000.00
--	-------------------

600 Supplies

610 General Supplies	20,959.25
----------------------	-----------

Total Supplies	\$20,959.25
-----------------------	--------------------

700 Property

752 Capital Equipment – Original and Additional	76,504.80
---	-----------

Total Property	\$76,504.80
-----------------------	--------------------

Total 4000 Facilities Acquisition, Construction and Improvement Services	\$2,772,272.78
---	-----------------------

Capital Reserve Fund - § 1431 (32)

4500 Building Acquisition and Construction Services – Original and Additional

Elementary

Secondary

Federal

Total

300 Purchased Professional and Technical Services

330 Other Professional Services

71,655.24

390 Other Purchased Professional and Technical Services

2,557,488.08

Total Purchased Professional and Technical Services

\$2,629,143.32

400 Purchased Property Services

430 Repairs and Maintenance Services

3,000.00

Total Purchased Property Services

\$3,000.00

600 Supplies

610 General Supplies

20,959.25

Total Supplies

\$20,959.25

700 Property

752 Capital Equipment – Original and Additional

76,504.80

Total Property

\$76,504.80

Total 4500 Building Acquisition and Construction Services – Original and Additional

\$2,729,607.37

LEA : 124159002 West Chester Area SD

Printed 1/31/2023 11:11:36 AM

Capital Reserve Fund - § 1431 (32)

4600 Existing Building Improvement Services

Elementary

Secondary

Federal

Total

300 Purchased Professional and Technical Services

390 Other Purchased Professional and Technical Services

42,665.41

Total Purchased Professional and Technical Services

\$42,665.41

Total 4600 Existing Building Improvement Services

\$42,665.41

LEA : 124159002 West Chester Area SD

Printed 1/31/2023 11:11:20 AM

Other Capital Projects Fund (39)

1000 Instruction	<u>Total</u>
700 Property	
790 Other Property	181,933.77
Total Property	\$181,933.77
Total 1000 Instruction	\$181,933.77

LEA : 124159002 West Chester Area SD

Printed 1/31/2023 11:11:20 AM

Other Capital Projects Fund (39)

1100 Regular Programs – Elementary / Secondary

	<u>Elementary</u>	<u>Secondary</u>	<u>Federal</u>	<u>Total</u>
700 Property				
790 Other Property	95,745.16	86,188.61		181,933.77
Total Property	\$95,745.16	\$86,188.61		\$181,933.77
Total 1100 Regular Programs – Elementary / Secondary	\$95,745.16	\$86,188.61		\$181,933.77

LEA : 124159002 West Chester Area SD

Printed 1/31/2023 11:11:20 AM

Other Capital Projects Fund (39)

1110 Regular Programs

700 Property
790 Other Property

	<u>Elementary</u>	<u>Secondary</u>	<u>Federal</u>	<u>Total</u>
Total Property	\$95,745.16	\$86,188.61		\$181,933.77
Total 1110 Regular Programs	\$95,745.16	\$86,188.61		\$181,933.77

Other Capital Projects Fund (39)

2000 Support Services

700 Property
790 Other Property

Total

8,986.80

Total Property **\$8,986.80**

800 Other Objects

810 Dues and Fees

840.53

Total Other Objects **\$840.53**

Total 2000 Support Services **\$9,827.33**

Other Capital Projects Fund (39)

2300 Support Services – Administration

Elementary

Secondary

Federal

Total

700 Property

790 Other Property

8,986.80

Total Property

\$8,986.80

800 Other Objects

810 Dues and Fees

840.53

Total Other Objects

\$840.53

Total 2300 Support Services – Administration

\$9,827.33

LEA : 124159002 West Chester Area SD

Printed 1/31/2023 11:11:29 AM

Other Capital Projects Fund (39)

2360 Office of the Superintendent / Executive Director Services

Elementary

Secondary

Federal

Total

700 Property

790 Other Property

8,986.80

Total Property

\$8,986.80

Total 2360 Office of the Superintendent / Executive Director Services

\$8,986.80

LEA : 124159002 West Chester Area SD

Printed 1/31/2023 11:11:29 AM

Other Capital Projects Fund (39)

2390 Other Administration Services

Elementary

Secondary

Federal

Total

800 Other Objects

810 Dues and Fees

840.53

Total Other Objects

\$840.53

Total 2390 Other Administration Services

\$840.53

Other Capital Projects Fund (39)

4000 Facilities Acquisition, Construction and Improvement Services

Total

100 Personnel Services – Salaries

100 Personnel Services – Salaries 235,010.61

Total Personnel Services – Salaries \$235,010.61

200 Personnel Services – Employee Benefits

210 Group Insurance – Contracted Provider 2,247.01

220 Social Security Contributions 17,147.20

230 PSERS Retirement Contributions 81,271.94

270 Group Insurance – Self-Insurance 38,892.64

Total Personnel Services – Employee Benefits \$139,558.79

300 Purchased Professional and Technical Services

390 Other Purchased Professional and Technical Services 6,766,227.59

Total Purchased Professional and Technical Services \$6,766,227.59

400 Purchased Property Services

440 Rentals 76,140.06

Total Purchased Property Services \$76,140.06

600 Supplies

610 General Supplies 26,092.72

Total Supplies \$26,092.72

700 Property

752 Capital Equipment – Original and Additional 481,405.40

790 Other Property 301,410.89

Total Property \$782,816.29

Total 4000 Facilities Acquisition, Construction and Improvement Services \$8,025,846.06

Other Capital Projects Fund (39)

	<u>Elementary</u>	<u>Secondary</u>	<u>Federal</u>	<u>Total</u>
4600 Existing Building Improvement Services				
100 Personnel Services – Salaries				
100 Personnel Services – Salaries				235,010.61
Total Personnel Services – Salaries				\$235,010.61
200 Personnel Services – Employee Benefits				
210 Group Insurance – Contracted Provider				2,247.01
220 Social Security Contributions				17,147.20
230 PSERS Retirement Contributions				81,271.94
270 Group Insurance – Self-Insurance				38,892.64
Total Personnel Services – Employee Benefits				\$139,558.79
300 Purchased Professional and Technical Services				
390 Other Purchased Professional and Technical Services				6,766,227.59
Total Purchased Professional and Technical Services				\$6,766,227.59
400 Purchased Property Services				
440 Rentals				76,140.06
Total Purchased Property Services				\$76,140.06
600 Supplies				
610 General Supplies				26,092.72
Total Supplies				\$26,092.72
700 Property				
752 Capital Equipment – Original and Additional				481,405.40
790 Other Property				301,410.89
Total Property				\$782,816.29
Total 4600 Existing Building Improvement Services				\$8,025,846.06

LEA : 124159002 West Chester Area SD

Printed 1/31/2023 11:11:42 AM

Other Capital Projects Fund (39)

5000 Other Expenditures and Financing Uses

Total

900 Other Uses of Funds

910 Redemption of Principal

40,865.46

Total Other Uses of Funds

\$40,865.46

Total 5000 Other Expenditures and Financing Uses

\$40,865.46

LEA : 124159002 West Chester Area SD

Printed 1/31/2023 11:11:42 AM

Other Capital Projects Fund (39)

5100 Debt Service / Other Expenditures and Financing Uses

Elementary

Secondary

Federal

Total

900 Other Uses of Funds

910 Redemption of Principal

40,865.46

Total Other Uses of Funds

\$40,865.46

Total 5100 Debt Service / Other Expenditures and Financing Uses

\$40,865.46

LEA : 124159002 West Chester Area SD

Printed 1/31/2023 11:11:42 AM

Other Capital Projects Fund (39)

	<u>Elementary</u>	<u>Secondary</u>	<u>Federal</u>	<u>Total</u>
5140 Leases				
900 <u>Other Uses of Funds</u>				
910 Redemption of Principal				40,865.46
Total Other Uses of Funds				\$40,865.46
Total 5140 Leases				\$40,865.46

LEA : 124159002 West Chester Area SD

Printed 1/31/2023 11:11:32 AM

Debt Service Fund (40)

2000 Support Services

800 Other Objects

810 Dues and Fees

238,260.10

Total Other Objects

\$238,260.10

Total 2000 Support Services

\$238,260.10

LEA : 124159002 West Chester Area SD

Printed 1/31/2023 11:11:32 AM

Debt Service Fund (40)

2300 Support Services – Administration

Elementary

Secondary

Federal

Total

800 Other Objects

810 Dues and Fees

238,260.10

Total Other Objects

\$238,260.10

Total 2300 Support Services – Administration

\$238,260.10

LEA : 124159002 West Chester Area SD

Printed 1/31/2023 11:11:32 AM

Debt Service Fund (40)

2390 Other Administration Services

Elementary

Secondary

Federal

Total

800 Other Objects

810 Dues and Fees

238,260.10

Total Other Objects

\$238,260.10

Total 2390 Other Administration Services

\$238,260.10

LEA : 124159002 West Chester Area SD

Printed 1/31/2023 11:11:44 AM

Debt Service Fund (40)

5000 Other Expenditures and Financing Uses

Total

900 Other Uses of Funds

910 Redemption of Principal

34,751,390.00

939 Other Fund Transfers

6,242.00

Total Other Uses of Funds

\$34,757,632.00

Total 5000 Other Expenditures and Financing Uses

\$34,757,632.00

LEA : 124159002 West Chester Area SD

Printed 1/31/2023 11:11:44 AM

Debt Service Fund (40)

5100 Debt Service / Other Expenditures and Financing Uses

Elementary

Secondary

Federal

Total

900 Other Uses of Funds

910 Redemption of Principal

34,751,390.00

Total Other Uses of Funds

\$34,751,390.00

Total 5100 Debt Service / Other Expenditures and Financing Uses

\$34,751,390.00

LEA : 124159002 West Chester Area SD

Printed 1/31/2023 11:11:44 AM

Debt Service Fund (40)

5120 Debt Service – Refunded Bonds

Elementary

Secondary

Federal

Total

900 Other Uses of Funds

910 Redemption of Principal

34,751,390.00

Total Other Uses of Funds

\$34,751,390.00

Total 5120 Debt Service – Refunded Bonds

\$34,751,390.00

LEA : 124159002 West Chester Area SD

Printed 1/31/2023 11:11:44 AM

Debt Service Fund (40)

5200 Interfund Transfers – Out

Elementary

Secondary

Federal

Total

900 Other Uses of Funds

939 Other Fund Transfers

6,242.00

Total Other Uses of Funds

\$6,242.00

Total 5200 Interfund Transfers – Out

\$6,242.00

LEA : 124159002 West Chester Area SD

Printed 1/31/2023 11:11:44 AM

Debt Service Fund (40)

5230 Capital Projects Fund Transfers

Elementary

Secondary

Federal

Total

900 Other Uses of Funds

939 Other Fund Transfers

6,242.00

Total Other Uses of Funds

\$6,242.00

Total 5230 Capital Projects Fund Transfers

\$6,242.00

	<u>General Fund(10)</u>	<u>Student Sponsored Activity Fund(21)</u>	<u>Public Purpose Trust(27)</u>	<u>Other Compt Approved (28)</u>	<u>Athletic / Activity(29)</u>
1000 Instruction					
1100 Regular Programs - Elementary / Secondary	104,658,495.02				
1200 Special Programs - Elementary / Secondary	41,625,224.37				
1300 Vocational Education	6,269,476.95				
1400 Other Instructional Programs - Elementary / Secondary	1,165,862.13				
1500 Nonpublic School Programs	136,906.33				
Total Instruction	\$153,855,964.80				
2000 Support Services					
2100 Support Services - Students	10,293,456.65				
2200 Support Services - Instructional Staff	6,258,064.13				
2300 Support Services - Administration	12,731,825.02				
2400 Support Services - Pupil Health	2,793,027.77				
2500 Support Services - Business	1,903,561.83				
2600 Operation and Maintenance of Plant Services	21,212,061.89				
2700 Student Transportation Services	12,302,370.82				
2800 Support Services - Central	4,045,747.32				
2900 Other Support Services	725,038.22				
Total Support Services	\$72,265,153.65				
3000 Operation of Non-Instructional Services					
3200 Student Activities	5,330,670.41				
3300 Community Services	162,613.93				
Total Operation of Non-Instructional Services	\$5,493,284.34				
4000 Facilities Acquisition, Construction and Improvement Services					
4500 Building Acquisition and Construction Services - Original and Additional					
4600 Existing Building Improvement Services					
Total Facilities Acquisition, Construction and Improvement Services					
5000 Other Expenditures and Financing Uses					
5100 Debt Service / Other Expenditures and Financing Uses	27,657,314.98				
5200 Interfund Transfers - Out	6,730,104.07				
Total Other Expenditures and Financing Uses	\$34,387,419.05				
TOTAL ACTUAL EXPENDITURES & OTHER FINANCING USES	\$266,001,821.84				

	<u>Capital Reserve (690.1850)(31)</u>	<u>Capital Reserve (1431)(32)</u>	<u>Other Capital Projects Fund(39)</u>	<u>Debt Service(40)</u>	<u>Permanent(90)</u>
1000 Instruction					
1100 Regular Programs - Elementary / Secondary			181,933.77		
1200 Special Programs - Elementary / Secondary					
1300 Vocational Education					
1400 Other Instructional Programs - Elementary / Secondary					
1500 Nonpublic School Programs					
Total Instruction			\$181,933.77		
2000 Support Services					
2100 Support Services - Students					
2200 Support Services - Instructional Staff		3,670,347.19			
2300 Support Services - Administration		265,054.64	9,827.33	238,260.10	
2400 Support Services - Pupil Health					
2500 Support Services - Business		39,930.55			
2600 Operation and Maintenance of Plant Services					
2700 Student Transportation Services					
2800 Support Services - Central		64,222.10			
2900 Other Support Services					
Total Support Services		\$4,039,554.48	\$9,827.33	\$238,260.10	
3000 Operation of Non-Instructional Services					
3200 Student Activities					
3300 Community Services					
Total Operation of Non-Instructional Services					
4000 Facilities Acquisition, Construction and Improvement Services					
4500 Building Acquisition and Construction Services - Original and Additional		2,729,607.37			
4600 Existing Building Improvement Services		42,665.41	8,025,846.06		
Total Facilities Acquisition, Construction and Improvement Services		\$2,772,272.78	\$8,025,846.06		
5000 Other Expenditures and Financing Uses					
5100 Debt Service / Other Expenditures and Financing Uses			40,865.46	34,751,390.00	
5200 Interfund Transfers - Out				6,242.00	
Total Other Expenditures and Financing Uses			\$40,865.46	\$34,757,632.00	
TOTAL ACTUAL EXPENDITURES & OTHER FINANCING USES		\$6,811,827.26	\$8,258,472.62	\$34,995,892.10	

Total

1000 <u>Instruction</u>	
1100 Regular Programs - Elementary / Secondary	104,840,428.79
1200 Special Programs - Elementary / Secondary	41,625,224.37
1300 Vocational Education	6,269,476.95
1400 Other Instructional Programs - Elementary / Secondary	1,165,862.13
1500 Nonpublic School Programs	136,906.33
Total Instruction	\$154,037,898.57
2000 <u>Support Services</u>	
2100 Support Services - Students	10,293,456.65
2200 Support Services - Instructional Staff	9,928,411.32
2300 Support Services - Administration	13,244,967.09
2400 Support Services - Pupil Health	2,793,027.77
2500 Support Services - Business	1,943,492.38
2600 Operation and Maintenance of Plant Services	21,212,061.89
2700 Student Transportation Services	12,302,370.82
2800 Support Services - Central	4,109,969.42
2900 Other Support Services	725,038.22
Total Support Services	\$76,552,795.56
3000 <u>Operation of Non-Instructional Services</u>	
3200 Student Activities	5,330,670.41
3300 Community Services	162,613.93
Total Operation of Non-Instructional Services	\$5,493,284.34
4000 <u>Facilities Acquisition, Construction and Improvement Services</u>	
4500 Building Acquisition and Construction Services - Original and Additional	2,729,607.37
4600 Existing Building Improvement Services	8,068,511.47
Total Facilities Acquisition, Construction and Improvement Services	\$10,798,118.84
5000 <u>Other Expenditures and Financing Uses</u>	
5100 Debt Service / Other Expenditures and Financing Uses	62,449,570.44
5200 Interfund Transfers - Out	6,736,346.07
Total Other Expenditures and Financing Uses	\$69,185,916.51
TOTAL ACTUAL EXPENDITURES & OTHER FINANCING USES	\$316,068,013.82

LEA : 124159002 West Chester Area SD

Printed 1/31/2023 11:11:55 AM

PSERS Salary Data (Salary Data should relate to the General Fund only)

Amount Description	Amount
Total Salary Base for salaries subject to PSERS withholding	108,158,521.24
Total Federally Funded salaries subject to PSERS withholding	349,730.42
	<hr/>

Title I Expenditure Data

Amount Description	Amount
Expenditures Funded with Current Title I Funds	555,223.00
Expenditures Funded with Carry over Title I Funds	
Total Title I Expenditure Data	<hr/> \$555,223.00 <hr/>

Title IV Revenue Data

Amount Description	Amount
Revenue from Title IV-A-1: Student Support and Academic Enrichment Grants	33,736.00
Revenue from Title IV-B: 21st Century Community Learning Centers	
	<hr/>

Title V Revenue Data

Amount Description	Amount
Revenue from Title V-B-2: Rural and Low-Income School Programs	
Revenue from Title V-B-1: Small Rural School Achievement (Directly from the Federal Govt)	
	<hr/>

1. <u>Current Special Education Expenditures within Function 1000.\r\nSee list of exclusions in the note below.</u>	32,992,881.75
2. <u>Current Special Education Expenditures within Function 2000.\r\nSee list of exclusions in the note below.</u>	6,996,487.77
3. <u>Current Special Education Expenditures within Sub-Function 2100.\r\nThis data should also be included in line 2 above.\r\nSee list of exclusions in the note below.</u>	4,684,491.44
4. <u>Current Special Education Expenditures within Sub-Function 2200.\r\nThis data should also be included in line 2 above.\r\nSee list of exclusions in the note below.</u>	212,420.08
5. <u>Current Special Education Expenditures within Sub-Function 2700.\r\nThis data should also be included in line 2 above.\r\nSee list of exclusions in the note below.</u>	1,752,121.71
6. <u>Current Special Education Expenditures within Sub-Function 3100.\r\nSee list of exclusions in the note below.</u>	
7. <u>Current Special Education Expenditures within Sub-Function 3200.\r\nSee list of exclusions in the note below.</u>	

Note: The Current Special Education Expenditure amounts for each line should be calculated as follows:

- * Include the total expenditures for special education costs from all funds for the function/sub-function requested
- * Exclude data from sub-functions: 1243,1450,1500,1600,1807,2280,2450,2750,2990
- * Exclude data from objects: 322,511,512,516,561,562,564,566,592,593,594,595,596,597,700,830,899

Benefits for Staff Relative to Collective Bargaining Agreements

	OBJECT	COVERED	NOT COVERED	TOTAL
10 General Fund				
	211 Medical Insurance			
	212 Dental Insurance			
	215 Eye Care Insurance			
	216 Prescription Insurance			
	271 Self-Insurance Medical Benefits	10,816,782.17	958,802.55	11,775,584.72
	272 Self-Insurance Dental Benefits	915,153.96	82,703.95	997,857.91
	275 Self-Insurance Eye Care Benefits	131,457.37	11,797.46	143,254.83
	276 Self-Insurance Prescription Benefits	4,295,459.94	383,722.79	4,679,182.73
	FUND TOTAL	\$16,158,853.44	\$1,437,026.75	\$17,595,880.19
50 Enterprise Fund	No Self Insurance data to report			
	211 Medical Insurance			
	212 Dental Insurance			
	215 Eye Care Insurance			
	216 Prescription Insurance			
	271 Self-Insurance Medical Benefits			
	272 Self-Insurance Dental Benefits			
	275 Self-Insurance Eye Care Benefits			
	276 Self-Insurance Prescription Benefits			
	FUND TOTAL			
60 Internal Service Fund	No Self Insurance data to report			
	211 Medical Insurance			
	212 Dental Insurance			
	215 Eye Care Insurance			
	216 Prescription Insurance			
	271 Self-Insurance Medical Benefits			
	272 Self-Insurance Dental Benefits			
	275 Self-Insurance Eye Care Benefits			
	276 Self-Insurance Prescription Benefits			
	FUND TOTAL			
Total of All Funds		\$16,158,853.44	\$1,437,026.75	\$17,595,880.19

LEA : 124159002 West Chester Area SD

Printed 1/31/2023 11:12:00 AM

Function	Special Education (Prior Year)	Nonspecial Education (Prior Year)	Total (Prior Year)	Special Education (Current Year)	Nonspecial Education (Current Year)	Total (Current Year)
2120 Guidance Services	2,133,814.48	3,200,721.73	5,334,536.21	2,281,057.73	3,421,586.60	5,702,644.33
2140 Psychological Services	2,023,050.64	224,783.40	2,247,834.04	2,139,283.30	237,698.14	2,376,981.44
2150 Speech Pathology and Audiology Services						
2160 Social Work Services	243,208.05	729,624.13	972,832.18	264,150.41	792,451.22	1,056,601.63
2260 Instruction and Curriculum Development Services	217,144.17	1,592,390.62	1,809,534.79	212,259.02	1,556,566.12	1,768,825.14
2350 Legal and Accounting Services	28,405.17	281,269.90	309,675.07	35,735.65	299,762.00	335,497.65
2420 Medical Services	498.00	3,652.00	4,150.00	360.00	2,640.00	3,000.00
2440 Nursing Services	286,998.65	2,104,656.77	2,391,655.42	311,358.89	2,283,298.50	2,594,657.39
2700 Student Transportation Services	3,062,130.00	8,952,899.94	12,015,029.94	3,388,476.51	8,913,894.31	12,302,370.82
Total	\$7,995,249.16	\$17,089,998.49	\$25,085,247.65	\$8,632,681.51	\$17,507,896.89	\$26,140,578.40

(PRINCIPAL AMOUNTS ONLY)

GOVERNMENTAL FUNDS/ ACTIVITIES

	Short-Term Borrowing	General Obligation Bonds/Notes	Authority Building Obligations	OLTD, Ext Term Fin, Leases	Other Post-Employment Benefits (OPEB)	Compensated Absences	Net Pension Liability	Total
1. Debt at Beginning of Fiscal Year		281,605,000.00		383,113.00	29,066,162.00	6,117,856.00	341,620,000.00	658,792,131.00
2. Additional Debt Incurred During Year		30,115,000.00		492,331.00	1,926,126.00	1,340,637.00		33,874,094.00
3. Retirements and Repayments		51,970,000.00		160,966.00		1,638,341.00	50,240,000.00	104,009,307.00
4. Debt at End of Fiscal Year		259,750,000.00		714,478.00	30,992,288.00	5,820,152.00	291,380,000.00	588,656,918.00
5. Accreted Interest at End Of Fiscal Year								
6. Total Debt and Accreted Interest		259,750,000.00		714,478.00	30,992,288.00	5,820,152.00	291,380,000.00	588,656,918.00
7. Current Portion P&I - Due within 1 year		27,856,906.00		282,660.00				28,139,566.00
8. Interest Paid during current fiscal year		9,816,234.00						9,816,234.00

(PRINCIPAL AMOUNTS ONLY)

PROPRIETARY FUNDS

- 1. Debt at Beginning of Fiscal Year
- 2. Additional Debt Incurred During Year
- 3. Retirements and Repayments
- 4. Debt at End of Fiscal Year
- 5. Accreted Interest at End Of Fiscal Year
- 6. Total Debt and Accreted Interest
- 7. Current Portion P&I - Due within 1 year
- 8. Interest Paid during current fiscal year

Total Principal and Interest Payments Made by Your School - All Funds

Function	Fund		Principal (910)	Principal (920)	Interest (830)	Total (Principal +Interest)	Misc Other Uses (990)
5110	10	General Fund	17,710,000.00		9,827,214.79	27,537,214.79	
5110	20	Special Revenue Funds					
5110	30	Capital Projects Funds					
5110	40	Debt Service Fund					
5110	90	Permanent Fund					
5120	10	General Fund					
5120	20	Special Revenue Funds					
5120	30	Capital Projects Funds					
5120	40	Debt Service Fund	34,751,390.00			34,751,390.00	
5140	10	General Fund	120,100.19			120,100.19	
5140	20	Special Revenue Funds					
5140	30	Capital Projects Funds	40,865.46			40,865.46	
5140	40	Debt Service Fund					
5140	90	Permanent Fund					
Total Debt Payments - Governmental Funds			\$52,622,355.65		\$9,827,214.79	\$62,449,570.44	

Function	Fund		Principal (910)	Principal (920)	Interest (830)	Total (Principal +Interest)
5110	50	Enterprise Fund				
5110	60	Internal Service Fund				
5120	50	Enterprise Fund				
5120	60	Internal Service Fund				
5140	50	Enterprise Fund				
5140	60	Internal Service Fund				

Total Debt Payments - Proprietary Funds

Debt Details
Governmental Funds/ Activities

Debt Category	Debt Issue Date (MM/YYYY)	Principal Amounts Only			Debt at End of Fiscal Year	Current Portion Due Within One Year (Principal and Interest)	Interest Paid During Fiscal Year
		Debt at Beginning of Fiscal Year	Additions	Reductions / Repayments			
General Obligation Bonds/Notes – CIB	04/2022		30,115,000.00		30,115,000.00	1,390,389.00	
General Obligation Bonds/Notes – CIB	06/2021	29,250,000.00		5,000.00	29,245,000.00	1,173,925.00	1,071,583.00
General Obligation Bonds/Notes – CIB	09/2020	14,540,000.00		4,495,000.00	10,045,000.00	258,100.00	432,850.00
General Obligation Bonds/Notes – CIB	09/2019	34,745,000.00		5,000.00	34,740,000.00	1,394,600.00	1,389,800.00
General Obligation Bonds/Notes – CIB	11/2018	9,980,000.00		5,000.00	9,975,000.00	341,328.00	336,453.00
General Obligation Bonds/Notes – CIB	12/2017	9,735,000.00		5,000.00	9,730,000.00	242,300.00	237,388.00
General Obligation Bonds/Notes – CIB	05/2017	5,405,000.00		5,405,000.00			55,483.00
General Obligation Bonds/Notes – CIB	12/2016	8,480,000.00		8,480,000.00			127,156.00
General Obligation Bonds/Notes – CIB	01/2016	6,400,000.00		2,035,000.00	4,365,000.00	2,348,250.00	320,000.00
General Obligation Bonds/Notes – CIB	04/2016	32,005,000.00		5,000.00	32,000,000.00	1,253,568.00	1,248,635.00
General Obligation Bonds/Notes – CIB	09/2015	770,000.00		770,000.00			7,700.00
General Obligation Bonds/Notes – CIB	01/2014	12,000,000.00			12,000,000.00	489,763.00	489,763.00
General Obligation Bonds/Notes – CIB	01/2014	24,500,000.00		1,185,000.00	23,315,000.00	15,735,750.00	1,225,000.00
General Obligation Bonds/Notes – CIB	09/2014	55,875,000.00		305,000.00	55,570,000.00	2,476,800.00	2,170,950.00
General Obligation Bonds/Notes – CIB	08/2012	21,000,000.00		21,000,000.00			315,000.00
General Obligation Bonds/Notes – CIB	08/2012	7,620,000.00		7,620,000.00			304,800.00
General Obligation Bonds/Notes – CIB	10/2009	9,300,000.00		650,000.00	8,650,000.00	752,133.00	83,673.00
Compensated Absences		6,117,856.00	1,340,637.00	1,638,341.00	5,820,152.00		
Other Post-Employment Benefits (OPEB)		29,066,162.00	1,926,126.00		30,992,288.00		
Net Pension Liability		341,620,000.00		50,240,000.00	291,380,000.00		
Leases		383,113.00	492,331.00	160,966.00	714,478.00	282,660.00	
Totals for Debt Entered:		\$658,792,131.00	\$33,874,094.00	\$104,009,307.00	\$588,656,918.00	\$28,139,566.00	\$9,816,234.00

General Fund (10)

Section 1: Tuition/Purchased Services as Reported within Expenditure Detail

	Amount
Tuition Reported in General Fund Expenditures 1000-560	13,653,354.93
Purchased Services in General Fund Expenditures 1000-594 and 1000-597	16,802.56
Section 1 Total	\$13,670,157.49

Section 2: Tuition Paid to Institution Types During Fiscal Year

	Tuition Paid For Nonspecial Education	Tuition Paid For Special Education	Total
1 1306 Institutions		498,133.69	498,133.69
2 Institutionalized Children's Programs		16,802.56	16,802.56
3 Juveniles Incarcerated in Adult Facilities			
4 Residential Treatment Facilities			
5 Other Local Education Agencies	71,972.95	77,115.10	149,088.05
6 Brick and Mortar Charter Schools	2,734,791.64	1,843,038.48	4,577,830.12
7 Cyber Charter Schools	1,968,394.66	1,265,903.92	3,234,298.58
8 Career and Technology Centers	2,680,374.87		2,680,374.87
9 Approved Private Schools		1,925,059.40	1,925,059.40
10 PA Chartered Schools for the Deaf and Blind			
11 Private Residential Rehabilitative Institutions		4,694.18	4,694.18
12 Juvenile Detention Centers			
13 Special Program Jointures			
14 Other Tuition Not Included Elsewhere In This Section	6,935.00	576,941.04	583,876.04
Section 2 Total	\$7,462,469.12	\$6,207,688.37	\$13,670,157.49

Food Service / Cafeteria Operations Fund (51)

3000 Operation of Non-Instructional Services

Total

500 Other Purchased Services

570 Food Service Management

4,137,074.00

Total Other Purchased Services

\$4,137,074.00

700 Property

740 Depreciation

130,190.00

Total Property

\$130,190.00

800 Other Objects

890 Miscellaneous Expenditures

(1,735.00)

Total Other Objects

(\$1,735.00)

Total 3000 Operation of Non-Instructional Services

\$4,265,529.00

LEA : 124159002 West Chester Area SD

Printed 1/31/2023 11:12:08 AM

Food Service / Cafeteria Operations Fund (51)

	<u>Elementary</u>	<u>Secondary</u>	<u>Federal</u>	<u>Total</u>
3100 Food Services				
500 <u>Other Purchased Services</u>				
570 Food Service Management				4,137,074.00
Total Other Purchased Services				\$4,137,074.00
700 <u>Property</u>				
740 Depreciation				130,190.00
Total Property				\$130,190.00
800 <u>Other Objects</u>				
890 Miscellaneous Expenditures				(1,735.00)
Total Other Objects				(\$1,735.00)
Total 3100 Food Services				\$4,265,529.00

	<u>Food Service(51)</u>	<u>Child Care Operations(52)</u>	<u>Other Enterprise(58)</u>	<u>Internal Service(60)</u>	<u>Total</u>
3000 <u>Operation of Non-Instructional Services</u>					
3100 Food Services	4,265,529.00				4,265,529.00
Total Operation of Non-Instructional Services	\$4,265,529.00				\$4,265,529.00
TOTAL ACTUAL EXPENDITURES & OTHER FINANCING USES	\$4,265,529.00				\$4,265,529.00

LEA : 124159002 West Chester Area SD

Printed 1/31/2023 11:12:15 AM

Fund	School	School Number	Local Personnel	Local Nonpersonnel	State Personnel	State Nonpersonnel	Federal Personnel	Federal Nonpersonnel	Total	Explanation
10	E N Peirce MS	1452	11,320,308.37	2,176,734.84	3,164,030.74	608,398.26	115,822.30	179,854.39	17,565,148.90	
	East Bradford El Sch	1392	4,961,366.22	939,502.64	1,386,703.86	262,591.37	63,683.29	79,314.67	7,693,162.05	
	East Goshen El Sch	1395	5,287,546.65	1,044,997.88	1,477,871.42	292,077.33	62,022.40	91,593.03	8,256,108.71	
	Exton El Sch	1456	4,958,541.51	916,874.81	1,385,914.35	256,266.88	59,542.54	82,065.70	7,659,205.79	
	Fern Hill El Sch	1454	4,619,678.67	833,822.36	1,291,202.05	233,053.68	206,264.25	73,109.28	7,257,130.29	
	Glen Acres El Sch	4812	5,558,629.72	980,250.44	1,553,639.25	273,980.40	192,454.54	84,486.72	8,643,441.07	
	Greystone El Sch	8491	4,984,779.99	1,030,735.71	1,393,248.01	288,091.01	62,764.84	88,410.93	7,848,030.49	
	Hillsdale El Sch	6910	5,733,243.66	1,147,448.62	1,602,443.91	320,712.35	226,128.08	101,296.48	9,131,273.10	
	J R Fugett MS	5137	10,404,762.72	1,895,915.47	2,908,135.36	529,909.14	107,831.86	157,458.50	16,004,013.05	
	Mary C Howse El Sch	1457	4,943,237.08	991,767.61	1,381,636.75	277,199.44	92,167.85	88,102.02	7,774,110.75	
	Penn Wood El Sch	4813	4,805,138.59	1,017,947.37	1,343,038.18	284,516.70	69,768.57	87,956.62	7,608,366.03	
	Sarah W Starkweather El Sch	7324	6,008,422.26	1,147,521.74	1,679,356.44	320,732.79	191,416.48	98,495.59	9,445,945.30	
	Stetson MS	1451	9,869,079.80	1,834,130.50	2,758,411.78	512,640.21	91,609.72	150,886.72	15,216,758.73	
	West Chester Bayard Rustin HS	7894	14,135,730.39	2,648,532.56	3,950,942.34	740,265.92	137,102.08	208,579.94	21,821,153.23	
	West Chester East HS	6734	13,966,917.12	2,643,836.10	3,903,758.95	738,953.25	118,500.06	210,197.02	21,582,162.50	
	West Chester Henderson HS	1453	15,785,278.96	3,069,404.75	4,411,991.83	857,899.86	186,141.76	245,793.29	24,556,510.45	
	Westtown-Thornbury El Sch	1458	4,992,440.26	1,119,816.12	1,395,389.06	312,989.05	77,631.71	96,318.90	7,994,585.10	
Total			132,335,101.97	25,439,239.52	36,987,714.28	7,110,277.64	2,060,852.33	2,123,919.80	206,057,105.54	